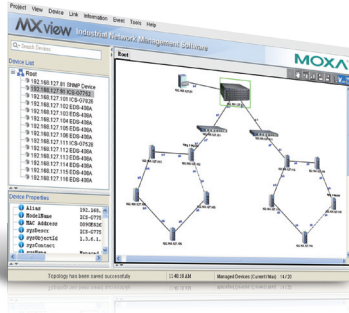


# MXview

## Industrial network management software designed for Moxa's networking solutions



- ▶ Discovers and visualizes network devices automatically
- ▶ Tracks past network status and events by playback
- ▶ Monitors up to 2000 network devices and notifies users in real time when events occur
- ▶ Provides central management of configurations and firmware for Moxa devices
- ▶ Generates OPC 2.0 compliant tags automatically to integrate with SCADA/HMI applications

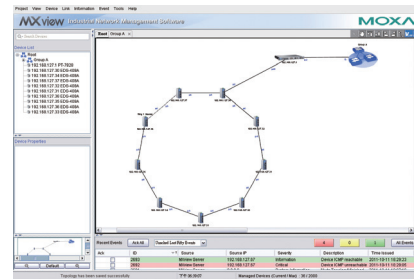
### Introduction

Moxa's MXview network management software is designed for configuring, monitoring, and troubleshooting Moxa networking devices in industrial networks. MXview provides an integrated management platform that can discover Moxa networking devices and SNMP/IP

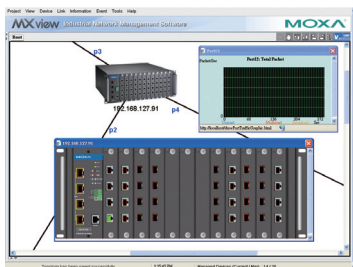
devices installed in subnets. All selected network components can be managed graphically via web browser from both local and remote sites—anytime and anywhere.

### Automatic Topology Discovery and Visualization

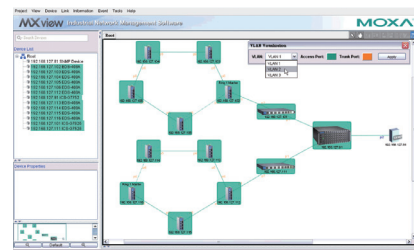
- Discovers up to 2,000 Moxa devices and SNMP/ICMP devices within scan range
- Maps port-level physical wired or wireless links automatically or manually
- Topology can be organized into multiple layers
- Graphic VLAN groups and IGMP snooping roles visualization
- Device front panel visualization, including ports and LED indicators
- Visualizes redundant link status and device roles of network redundancy protocols



Auto Topology and Ring Layout



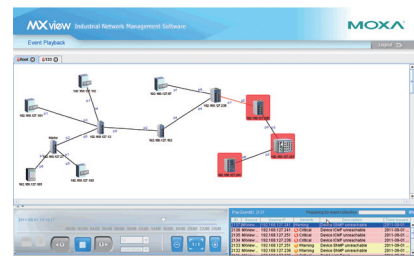
Virtual Device Panel



VLAN Visualization

### Event Playback and Traffic Reports

- Playback interface tracks network status and events from any time in the past month
- Provides comprehensive event history that can be filtered by condition for quick troubleshooting
- Generates trend graphs from collected bandwidth utilization and error packet rate statistics
- Events can be acknowledged to highlight relevant events and hide irrelevant events



Event Playback

### Real-time Event Notification

- Detects problems in real time using SNMP Trap/Inform or periodic polling
- Abnormal devices and links are highlighted in color on maps
- Event-based notification, including dead links, power down, SNMP failure, bandwidth utilization, and packet error rate
- Event notification alarms via SMS and email, or locally by beep and program

### Centralized Configuration and Firmware Management

- Bulk deployment of device configurations and firmware
- Backup of configurations to local computers or remote server
- Scheduling for periodic configuration backup
- Save history of configuration change
- Comparison tool for checking differences between 2 configurations

### Integration with Other Systems

- Generate OPC 2.0 compliant tags for SCADA/HMI integration

## : System Requirements

	Client Requirements	Server Requirements
CPU	Core i3 3.0 G or higher	Intel i5 2.5 Ghz or higher
RAM	2 G or higher	4 G or higher
Hard Disk Space	500 G or higher	1 TB, 7200 RPM, SATA-3Gb/s or higher
OS	Windows XP, Windows 7(32/64-bit), Windows Server 2008 (32/64-bit)	Windows XP Professional, Windows 7 (32/64-bit), Windows Server 2008 (32/64-bit)
Browser	IE 6/8/9 (with JRE 6)	-

## : Ordering Information

### Commercial Versions

**MXview-2000:** Industrial network management software with a license for 2000 nodes (by IP address)

**MXview-1000:** Industrial network management software with a license for 1000 nodes (by IP address)

**MXview-500:** Industrial network management software with a license for 500 nodes (by IP address)

**MXview-250:** Industrial network management software with a license for 250 nodes (by IP address)

**MXview-100:** Industrial network management software with a license for 100 nodes (by IP address)

**MXview-50:** Industrial network management software with a license for 50 nodes (by IP address)

### License Upgrade

**MXview Upgrade-50:** License expansion of MXview industrial network management software by 50 nodes (by IP address)

### Trial Version

**MXview Trial Version:** A free trial version of MXview is available for download from Moxa's website

### Package Checklist

- MXview CD (includes the MXview software and related documents)
- Quick installation guide (printed)

## : Supported Devices

Model Name	Required Firmware Version	Model Name	Required Firmware Version	Model Name	Required Firmware Version
EDS-405A/408A	2.6 or higher	IKS-G6524	1.0 or higher	PT-508/510	3.0 or higher
EDS-505A/508A/516A	2.6 or higher	IKS-G6824	1.1 or higher	TN-5508/5510	1.1 or higher
EDS-510A	2.6 or higher	ICS-G7526/G7528	1.0 or higher	TN-5516/5518	1.2 or higher
EDS-518A	2.6 or higher	ICS-G7826/G7828	1.1 or higher	TN-5508-4PoE	2.6 or higher
EDS-608/611/616/619	1.1 or higher	ICS-G7748/G7750/G7752	1.2 or higher	TN-5516-8PoE	2.6 or higher
EDS-728	2.6 or higher	ICS-G7848/G7850/G7852	1.2 or higher	EDR-G903	2.1 or higher
EDS-828	2.6 or higher	PT-7710	1.2 or higher	EDR-G902	1.0 or higher
EDS-G509	2.6 or higher	PT-7728	2.6 or higher	AWK-3121	1.6 or higher
EDS-P510	2.6 or higher	PT-7828	2.6 or higher	AWK-4121	1.6 or higher
EDS-P506A-4PoE	2.6 or higher	PT-G7509	1.1 or higher	NPort S8455	1.3 or higher
IKS-6726	2.6 or higher			NPort S8458	1.3 or higher
IKS-6524/6526	2.6 or higher				

Note: Additional model names will be added in the near future. Please check Moxa's website for the most up-to-date information.