

# OnCell G4308-LTE4 Series

## 8-port industrial LTE Cat. 4 secure cellular routers



### Features and Benefits

- Integrated LTE Cat. 4 module with global band support
- Cellular link redundancy with dual-SIM GuaranLink support
- Supports WAN redundancy between cellular and Ethernet
- Support MRC Quick Link Ultra for centralized monitoring and remote access to the on-site devices
- Supports serial TSC (Traffic Signal Controller) communication for SCATS (Sydney Coordinated Adaptive Traffic System)
- Power management support for wake-up time scheduling or digital input signals, suitable for vehicle ignition systems
- Examine industrial protocol data with Deep Packet Inspection (DPI) technology
- Rugged and compact design for harsh environments

### Certifications



## Introduction

The OnCell G4308-LTE4 Series is a reliable and powerful secure cellular router with global LTE coverage. This router provides reliable data transfers from serial and Ethernet to a cellular interface that can be easily integrated into legacy and modern applications. WAN redundancy between the cellular and Ethernet interfaces guarantees minimal downtime, while also providing extra flexibility. To enhance cellular connection reliability and availability, the OnCell G4308-LTE4 Series features GuaranLink with dual SIM cards. Moreover, the OnCell G4308-LTE4 Series features dual power inputs, high-level EMS, and a wide operating temperature for deployment in demanding environments. Through the power management function, administrators can set up schedules to fully control the OnCell G4308-LTE4 Series' power usage and minimize power consumption when idle to save cost.

Designed for robust security, the OnCell G4308-LTE4 Series supports Secure Boot to ensure system integrity, multi-layer firewall policies for managing network access and traffic filtering, and VPN for secure remote communications.

### Highly Integrated Industrial Cellular Routers

- Integrated LTE Cat. 4 module with global band
- 8 Gigabit ports with managed Layer 2 switch functions
- Supports serial devices with the 3-in-1 RS232/422/485 port
- Supports MRC Quick Link Ultra for remote access and is easy to configure. For more information, please visit Secure Remote Access (<https://www.moxa.com/en/products/industrial-network-infrastructure/secure-remote-access/moxa-remote-connect-suite>).

### Defend Against Malicious Threats With Advanced Cybersecurity Features

- Secure boot for system integrity and to protect against tampering attacks
- VPN functionality for secure and encrypted data communication
- Firewall policies to protect the internal network from unauthorized access and DoS attacks
- Network Address Translation (NAT) provides IP privacy between trusted and untrusted networks
- Deep Packet Inspection (DPI) examine the data portion of network packets for various OT-specific protocols

### Industrial-grade Reliability

- Dual power inputs for power redundancy
- GuaranLink and dual SIM card support for reliable cellular connectivity
- -30 to 70°C wide operating temperature

### MX-ROS Addresses Growing Cybersecurity Threats

Moxa's MX-ROS (<https://www.moxa.com/en/spotlight/portfolio/mx-ros/index>) is a software platform for industrial security routers and firewalls. The platform supports the robust security and user-friendly operation of secure routers through simplified web and CLI interfaces. MX-ROS devices offer a wealth of the latest cross-industry Operational Technology (OT) network management features with each release to safeguard hardware and software.

## Specifications

### Cellular Interface

Cellular Standards	LTE CAT 4, HSPA, UMTS
LTE Data Rate	20 MHz bandwidth: 150 Mbps DL, 50 Mbps UL
Band Options (GL)	GL(-T) models: LTE B1 (2100 MHz) / B2 (1900 MHz) / B3 (1800 MHz) / B4 (1700/2100 MHz (AWS)) / B5 (850 MHz) / B7 (2600 MHz) / B8 (900 MHz) / B12 (700 MHz) / B13 (700 MHz) / B14 (700 MHz) / B20 (800 MHz) / B25 (1900 MHz) / B26 (850 MHz) / B28 (700 MHz)  UMTS/HSPA B1 (2100 MHz) / B2 (1900 MHz) / B4 (1700 MHz(AWS)) / B5 (850 MHz) / B6 (800MHz) / B8 (900 MHz) / B19 (800 MHz)
No. of SIMs	2 Push-eject tray type
SIM Format	Nano SIM
Cellular Antenna Connectors	2 SMA female

### Ethernet Interface

10/100/1000BaseT(X) Ports (RJ45 connector)	8
--	---

### GNSS Interface

GNSS Bands	GPS (1575.42 MHz) GLONASS (1597.52 MHz) Galileo (1575.42 MHz) BeiDou (1561.098 MHz)
GNSS Antenna Connectors	1 SMA female

### Input/Output Interface

Digital Output Channels	1 Relay output with current carrying capacity of 1 A @ 24 VDC
Digital Input Channels	1
Digital Inputs	0 to +3 V for state 0 +9 to +36 V for state 1
Buttons	Reset button

### USB Interface

No. of USB Ports	1
USB Connector	USB Type A
USB Standards	USB 2.0 <sup>1</sup>

### Serial Interface

No. of Ports	1
Connector	DB9 male
Serial Standards	RS-232/422/485
Data Bits	5, 6, 7, 8
Stop Bits	1, 1.5, 2
Parity	None

1. For use by ABC-02.

	Even Odd
Baudrate	300 bps to 921.6 kbps
Console Port	RS-232 (TxD, RxD, GND), USB type-C (115200, n, 8, 1) <sup>2</sup>
<b>Serial Signals</b>	
RS-232	TxD, RxD, RTS, CTS, DTR, DSR, DCD, GND
RS-422	Tx+, Tx-, Rx+, Rx-, GND
RS-485-2w	Data+, Data-, GND
RS-485-4w	Tx+, Tx-, Rx+, Rx-, GND
<b>Operation Modes</b>	
Standards	Real COM mode RFC2217 mode SCATS TCP Client mode TCP Server mode UDP mode
<b>LED Interface</b>	
LED Indicators	PWR1, PWR2, STATE, USB, SIM1, SIM2, CELL, LTE, GNSS, SERIAL, VPN
<b>Ethernet Software Features</b>	
Management	Back Pressure Flow Control GuaranLink LLDP Moxa Remote Connect (MRC) MXconfig MXsecurity <sup>3</sup> MXview One Power Management Remote SMS Control Syslog
Broadcast Forwarding	IP directed broadcast, broadcast forwarding
Configuration Options	Serial Console <sup>2</sup> Web Console (HTTP/HTTPS) Command Line Interface (CLI) through Serial/Telnet/SSH
Network Protocols	DDNS DHCP Server/Client SMTP SNMPv1/v2c/v3 ARP Telnet TCP/IP UDP
Filter	802.1Q VLAN Port-based VLAN
Unicast Routing	Static Route
Multicast Routing	Static Route

2. We recommend using the Moxa CBL-USBCF9-GY-150 console cable, which can be purchased separately.  
3. To be released in Q4 2025.

Routing Redundancy	VRRP
Time Management	NTP Server/Client SNTP
<b>Security Functions</b>	
Hardware-based Security	Secure Boot
Password	User-level password protection
Authentication	Local database RADIUS Access Control List
<b>Firewall</b>	
Filter	DDoS Ethernet protocols ICMP IP address MAC address Ports DPI
<b>NAT</b>	
Features	1-to-1 N-to-1 PAT NAT loopback Double NAT
<b>IPsec VPN</b>	
Authentication	MD5 and SHA (SHA-256) RSA (key size: 1024-bit, 2048-bit) Pre-shared Key or X.509 v3 certificate
Encryption	DES 3DES AES-128 AES-192 AES-256
Concurrent VPN Tunnels	Max. 15 IPsec VPN tunnels
Protocols	IPsec
<b>OpenVPN</b>	
OpenVPN	OpenVPN (client)
Encryption	AES-128/192/256 CBC AES-128/192/256 GCM CHACHA20-POLY1305
<b>Power Parameters</b>	
Input Current	1.16 A (max.)
Input Voltage	12 to 48 VDC
Power Consumption	47 mW at 12 V (idle) 11.05 W at 12 V (typ.) 14.28 W at 48 V (max.)
Power Connector	Screw-locked terminal block
Reverse Polarity Protection	Supported

## Physical Characteristics

Housing	Metal
Dimensions	125 x 58.2 x 100 mm (4.92 x 2.29 x 3.94 in)
Weight	707 g (1.56 lb)
Installation	DIN-rail mounting Wall mounting (with optional kit)
IP Rating	IP40 <sup>4</sup>

## Environmental Limits

Operating Temperature	Standard Models: -10 to 55°C (14 to 131°F) Wide Temp. Models: -30 to 70°C (-22 to 158°F)
Storage Temperature (package included)	-40 to 85°C (-40 to 185°F)
Ambient Relative Humidity	5 to 95% (non-condensing)

## Standards and Certifications

EMC	EN 55032/35 EN 61000-6-2/-6-4 CISPR 32/35
EMI	ICES-003, FCC Part 15B Class A
EMS	IEC 61000-4-2 ESD: Contact: 8 kV; Air: 15 kV (level 4) <sup>5</sup> IEC 61000-4-3 RS: 80 MHz to 1 GHz: 10 V/m (level 3); 1.8, 2.6, 3.5, 5GHz: 3V/m (level 2) IEC 61000-4-4 EFT: Power: 2 kV; IO: 1 kV (level 3) <sup>5</sup> IEC 61000-4-5 Surge: Power: 2 kV, Signal: 2 kV (level 3) <sup>5</sup> IEC 61000-4-6 CS: 0.15 MHz to 80 MHz; Signal: 10 V (level 3) IEC 61000-4-8: 30 A/m (level 4)
Freefall	IEC 60068-2-32
Radio Frequency	FCC ID RI7LE910CXWWX EN 303 413
Radio	RCM IC: 5131A-LE910CXWWX UKCA
Cellular Standards	EN 301 489-1/-19 (GPS) EN 301 489-1/-52 (WCDMA/LTE) EN 301 511 EN 301908-1/-2/-13
Safety	UL 62368-1 EN 62368-1
Shock	IEC 60068-2-27
Vibration	IEC 60068-2-6

## MTBF

Time	1,533,742 hrs
Standards	Telcordia Standard SR-332

4. With the rubber SIM slot cover closed.

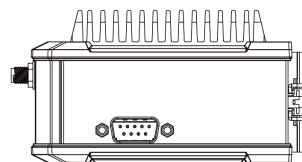
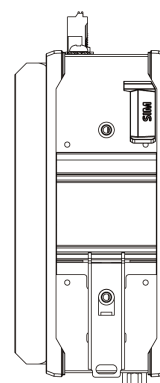
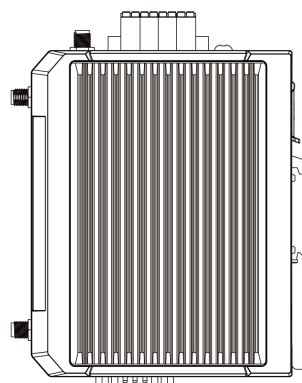
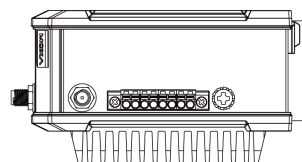
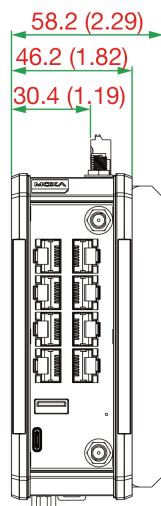
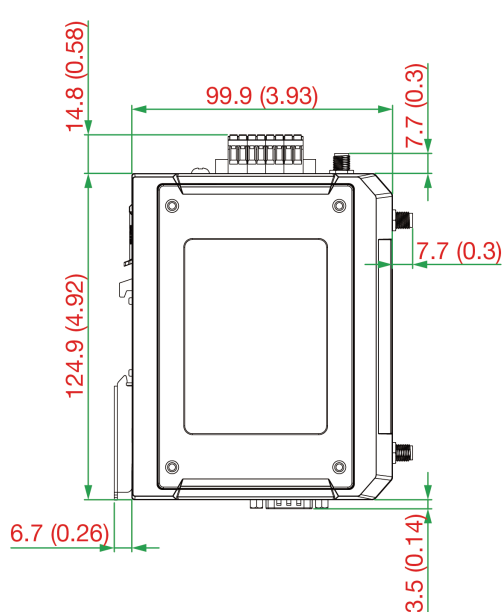
5. This device demonstrates a capacity that exceeds the requirements set by certification standards.

<b>Warranty</b>	
Warranty Period	5 years
Details	See <a href="http://www.moxa.com/warranty">www.moxa.com/warranty</a>

<b>Package Contents</b>	
Device	1 x OnCell G4308-LTE4 Series secure cellular router
Documentation	1 x quick installation guide 1 x warranty card

## Dimensions

Unit: mm (inch)



## Ordering Information

Model Name	LTE Band	Operating Temp.
OnCell G4308-LTE4-GL	B1 (2100 MHz) / B2 (1900 MHz) / B3 (1800 MHz) / B4 (1700/2100 MHz (AWS)) / B5 (850 MHz) / B7 (2600 MHz) / B8 (900 MHz) / B12 (700 MHz) / B13 (700 MHz) / B14 (700 MHz) / B20 (800 MHz) / B25 (1900 MHz) / B26 (850 MHz) / B28 (700 MHz)	-10 to 55°C
OnCell G4308-LTE4-GL-T	B1 (2100 MHz) / B2 (1900 MHz) / B3 (1800 MHz) / B4 (1700/2100 MHz (AWS)) / B5 (850 MHz) / B7 (2600 MHz) / B8 (900 MHz) / B12 (700 MHz) / B13 (700 MHz) / B14 (700 MHz) / B20 (800 MHz) / B25 (1900 MHz) / B26 (850 MHz) / B28 (700 MHz)	-30 to 70°C

## Accessories (sold separately)

<b>Storage Kits</b>	
ABC-02-USB	Configuration backup and restoration tool, firmware upgrade, and log file storage tool for managed Ethernet switches and routers, 0 to 60°C operating temperature
ABC-02-USB-T	Configuration backup and restoration tool, firmware upgrade, and log file storage tool for managed Ethernet switches and routers, -40 to 75°C operating temperature

## Antennas

ANT-5G-OSM-04	4 dBi LTE/5G NR dipole antenna with SMA (male) connector
MAT-5G-PA-SM-2-06-3m	6 dBi MIMO panel antenna with 2 SMA (male) connectors for cellular applications, 3 m cable
ANT-GPS-CSM-04-3m BK	20 dBi at 1575 to 1605 MHz, SMA (male), right-hand circular polarization (RHCP), active GPS antenna, 3-meter cable

## Wireless Antenna Cables

A-CRF-SMSF-R3-100	Wireless antenna cable with SMA (male) to SMA (female) connectors, magnetic base, RG-174 type, 1 m
A-CRF-SMSF-L1-300	Wireless antenna cable with SMA (male) to SMA (female) connectors, magnetic base, LMR195 type, 3 m
A-CRF-SMSF-C2-300	Wireless antenna cable with SMA (male) to SMA (female) connectors, CFD-200 type, 3 m
A-CRF-SMSF-C2-500	Wireless antenna cable with SMA (male) to SMA (female) connectors, CFD-200 type, 5 m

## Mounting Kits

WK-41-01	Wall-mounting kit with 1 plate (41 x 144 x 7.5 mm)
WK-160-01	Wall-mounting kit with 1 plate (160 x 89 x 2.0 mm), 4 screws, black

## Software

LIC-MXviewOne-NEW-XN-SR	MXview One node license with customizable node quantity (minimum 1 node)
LIC-MRCQL-ADD-1Y-XN-SR	1-year MRC Quick Link add-on license with customizable node quantity (minimum 1 node)

© Moxa Inc. All rights reserved. Updated June 19, 2025.

This document and any portion thereof may not be reproduced or used in any manner whatsoever without the express written permission of Moxa Inc. Product specifications subject to change without notice. Visit our website for the most up-to-date product information.