

# CN2510 系列

## 8 埠和 16 埠 RS-232 終端機伺服器



### 特色與優點

- 液晶控制面板，方便現場管理
- 當作為獨立遠端存取伺服器操作時，最多可支援 16 位撥入使用者
- 支援包含 RADIUS 驗證和 RIP I/II 路由通訊協定的 PPP/SLIP
- 用於 Windows 和 Linux 的 Real COM/TTY 驅動程式
- 48 VDC，適用於電信應用 (適用於 CN2510-8/16-48V)

### 認證

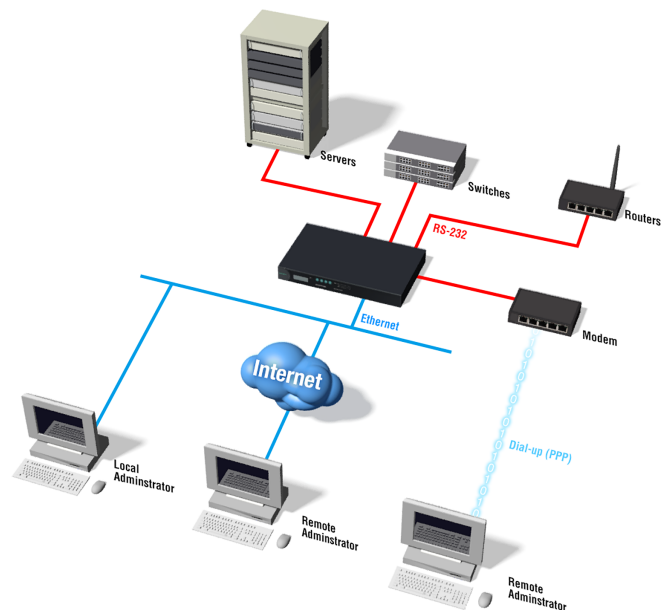


### 簡介

對於大多數公司而言，IT 設備的效能對於日常運作極為重要。為了讓伺服器、路由器、PBX 或租用線路數據機正常運作，能將停機時間降至最低，並快速排除故障是重要的。KVM 通常用於連線管理配備螢幕和鍵盤的設備。然而，RS-232 主控台存取通常是在無其他選擇的最終方式。

### 遠端主控台管理

CN2510 採用方便的 1U 機架式套組，提供簡易的 console 管理解決方案。透過 RS-232 連接埠，可輕鬆對網路設備的 console port 連接埠建立連線，例如 UNIX 伺服器或路由器，以便集中管理連接的裝置。每個裝置的 RS-232 console port 連接埠都會成為可存取網路的節點，讓使用者從網路上的任何位置進行 Telnet 存取，以便設定及管理裝置。支援完整數據機控制訊號，確保各種串列周邊設備的相容性。



### 使用者驗證

在 console 管理解決方案中嚴格控制存取非常重要，而且在允許 console port 連接埠連線之前，應先驗證使用者權限。CN2510 的驗證程序包含針對內部資料庫或 RADIUS 伺服器驗證使用者名稱和密碼。

### 回撥

當撥號連線用於 out-of-band，CN2510 提供方便的回撥功能。CN2510 會呼叫管理主機以建立連線，而非直接接受連線要求。回撥功能可確保只有已註冊的使用者或主機才能透過 CN2510 遠端連線至網路，將長途電話費用降至最低。

## 外觀



## 規格

### Ethernet Interface

10/100BaseT(X) Ports (RJ45 connector)	1
---------------------------------------	---

### Ethernet Software Features

Management	Device Search Utility (DSU), DHCP Client, TCP/IP, UDP
MIB	MIB-II
Security	RADIUS
Unicast Routing	RIPV1/V2, Static Route
Windows Real COM Drivers	Windows 95/98/ME/NT/2000, Windows XP/2003/Vista/2008/7/8/8.1/10 (x86/x64), Windows 2008 R2/2012/2012 R2 (x64), Windows Embedded CE 5.0/6.0, Windows XP Embedded
Linux Real TTY Drivers	Kernel versions: 2.4.x, 2.6.x, 3.x, 4.x, and 5.x
Fixed TTY Drivers	SCO UNIX, SCO OpenServer, UnixWare 7, QNX 4.25, QNX 6, Solaris 10, FreeBSD, AIX 5.x, HP-UX 11i, Mac OS X

### Serial Interface

Connector	8-pin RJ45
No. of Ports	CN2510-8 Series: 8 CN2510-16 Series: 16
Serial Standards	RS-232
Operation Modes	Terminal mode
Baudrate	50 bps to 921.6 kbps
Data Bits	5, 6, 7, 8
Stop Bits	1, 1.5, 2
Parity	None, Even, Odd, Space, Mark
Flow Control	None, RTS/CTS, XON/XOFF

### Power Parameters

Input Current	CN2510-8/16: 125 mA @ 110 VAC CN2510-8/16-48V: 180 mA @ 48 VDC
Input Voltage	AC models: 100 to 240 VAC (47 to 63 Hz) DC models: ±48 VDC (38 to 72 VDC, -38 to -72 VDC)

## Physical Characteristics

Housing	Metal
Installation	19-inch rack mounting
Dimensions	440 x 198 x 45 mm (17.3 x 7.8 x 1.77 in)
Weight	CN2510-8: 2,680 g (5.91 lb) CN2510-8-48V: 2,420 g (5.34 lb) CN2510-16: 2,700 g (5.95 lb) CN2510-16-48V: 2,480 g (5.27 lb)

## Environmental Limits

Operating Temperature	0 to 55°C (32 to 131°F)
Storage Temperature (package included)	-20 to 70°C (-4 to 158°F)
Ambient Relative Humidity	5 to 95% (non-condensing)

## Standards and Certifications

EMC	EN 55032/24
EMI	CISPR 32, FCC Part 15B Class A
EMS	AC models: IEC 61000-4-2 ESD: Contact: 8 kV; Air: 15 kV IEC 61000-4-3 RS: 80 MHz to 1 GHz: 10 V/m IEC 61000-4-4 EFT: Power: 4 kV; Signal: 2 kV IEC 61000-4-5 Surge: Power: 2.5 kV; Signal: 1 kV IEC 61000-4-6 CS: 150 kHz to 80 MHz: 3 V/m; Signal: 3 V/m IEC 61000-4-8 PFMF IEC 61000-4-11 DIPs  DC models: IEC 61000-4-2 ESD: Contact: 8 kV; Air: 15 kV IEC 61000-4-3 RS: 80 MHz to 1 GHz: 10 V/m IEC 61000-4-4 EFT: Power: 4 kV; Signal: 2 kV IEC 61000-4-5 Surge: Power: 2.5 kV; Signal: 1 kV IEC 61000-4-6 CS: 150 kHz to 80 MHz: 3 V/m; Signal: 3 V/m IEC 61000-4-8 PFMF IEC 61000-4-8 PFMF
Safety	EN 60950-1, UL 60950-1

## MTBF

Time	CN2510-8: 857,279 hrs CN2510-8-48V: 850,673 hrs CN2510-16: 654,195 hrs CN2510-16-48V: 650,342 hrs
Standards	Telcordia (Bellcore) Standard TR/SR

## Warranty

Warranty Period	5 years
Details	See <a href="http://www.moxa.com/tw/warranty">www.moxa.com/tw/warranty</a>

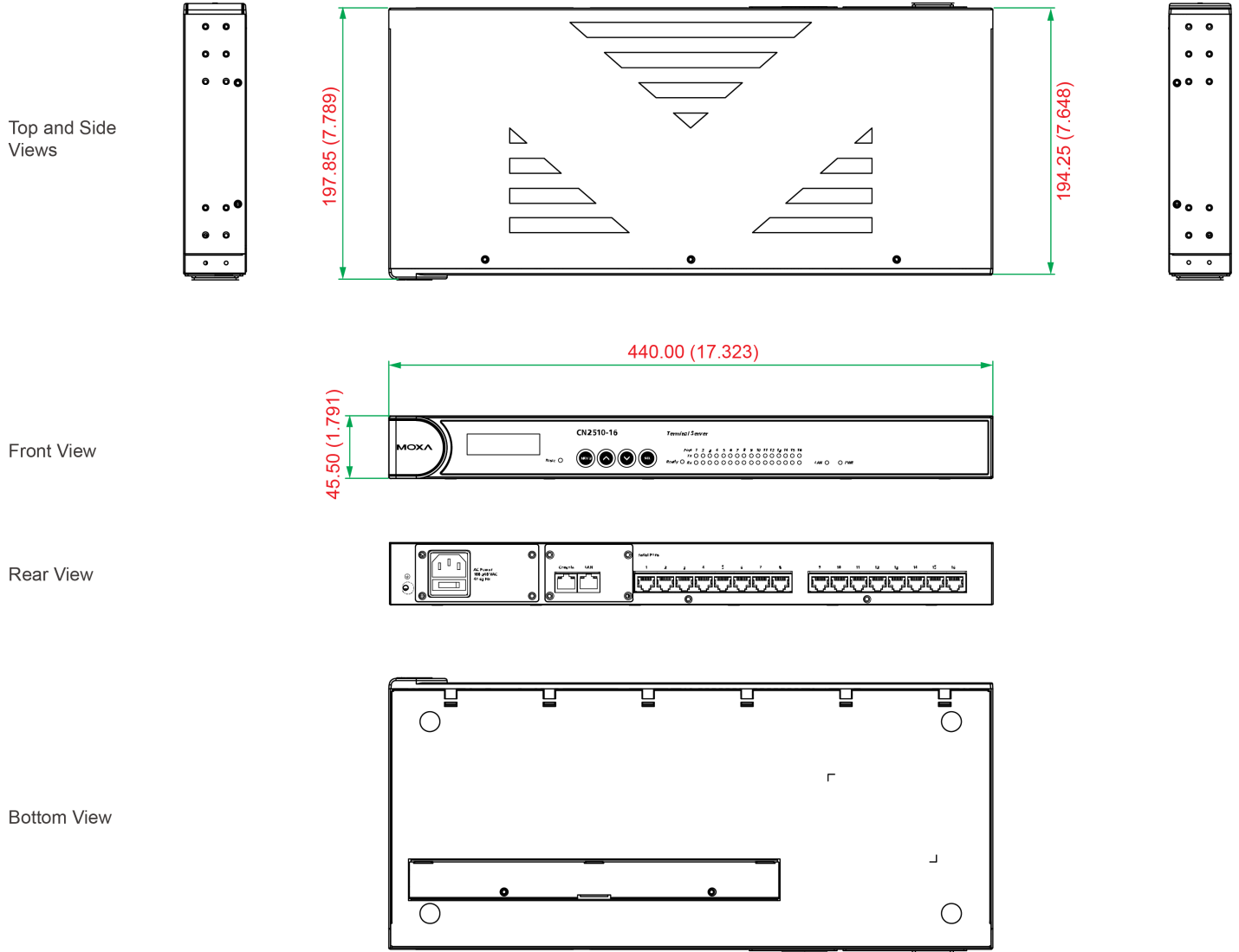
## Package Contents

Device	1 x CN2510 Series terminal server
Cable	1 x RJ45-to-DB9 console cable 1 x power cord, suitable for your region (AC models)

Installation Kit	1 x rack-mounting kit
Documentation	1 x quick installation guide 1 x warranty card

## 尺寸

單位：公釐 (英吋)



## 訂購資訊

Model Name	Serial Standards	No. of Serial Ports	Serial Connector	Power Input
CN2510-8	RS-232	8	8-pin RJ45	100-240 VAC
CN2510-8-48V	RS-232	8	8-pin RJ45	±48 VDC
CN2510-16	RS-232	16	8-pin RJ45	100-240 VAC
CN2510-16-48V	RS-232	16	8-pin RJ45	±48 VDC

## 配件 (選購)

### Cables

CBL-RJ45F25-150	8-pin RJ45 to DB25 female serial cable, 1.5 m
-----------------	---

CBL-RJ45F9-150	8-pin RJ45 to DB9 female serial cable, 1.5m
CBL-RJ45M25-150	8-pin RJ45 to DB25 male serial cable, 1.5m
CBL-RJ45M9-150	8-pin RJ45 to DB9 male serial cable, 1.5m
CBL-RJ45SF25-150	8-pin RJ45 to DB25 female serial cable with shielding, 1.5m
CBL-RJ45SF9-150	8-pin RJ45 to DB25 male serial cable with shielding, 1.5m
CBL-RJ45SM25-150	8-pin RJ45 to DB9 female serial cable with shielding, 1.5m
CBL-RJ45SM9-150	8-pin RJ45 to DB9 male serial cable with shielding, 1.5m

### Power Cords

PWC-C13AU-3B-183	Power cord with Australian (AU) plug, 1.83 m
PWC-C13CN-3B-183	Power cord with three-prong China (CN) plug, 1.83 m
PWC-C13EU-3B-183	Power cord with Continental Europe (EU) plug, 1.83 m
PWC-C13JP-3B-183	Power cord with Japan (JP) plug, 7A/125V, 1.83 m
PWC-C13UK-3B-183	Power cord with United Kingdom (UK) plug, 1.83 m
PWC-C13US-3B-183	Power cord with United States (US) plug, 1.83 m

### Rack-Mounting Kits

WK-45-01	Rack-mounting kit, 2 L-shaped plates, 8 screws, 45 x 57 x 2.5 mm
----------	--

© Moxa Inc. 版權所有. 2019 年 10 月 8 日更新。

未經 Moxa Inc. 明確書面許可，不得以任何方式複製或使用本文件及其任何部分。產品規格如有變更，恕不另行通知。請至本公司官網了解最新的產品資訊。