

ioLogik 4000 Series User's Manual

Edition 4.1, September 2016

www.moxa.com/product

MOXA®

© 2016 Moxa Inc. All rights reserved.

ioLogik 4000 Series User's Manual

The software described in this manual is furnished under a license agreement and may be used only in accordance with the terms of that agreement.

Copyright Notice

© 2016 Moxa Inc. All rights reserved.

Trademarks

The MOXA logo is a registered trademark of Moxa Inc.
All other trademarks or registered marks in this manual belong to their respective manufacturers.

Disclaimer

Information in this document is subject to change without notice and does not represent a commitment on the part of Moxa.

Moxa provides this document as is, without warranty of any kind, either expressed or implied, including, but not limited to, its particular purpose. Moxa reserves the right to make improvements and/or changes to this manual, or to the products and/or the programs described in this manual, at any time.

Information provided in this manual is intended to be accurate and reliable. However, Moxa assumes no responsibility for its use, or for any infringements on the rights of third parties that may result from its use.

This product might include unintentional technical or typographical errors. Changes are periodically made to the information herein to correct such errors, and these changes are incorporated into new editions of the publication.

Technical Support Contact Information

www.moxa.com/support

Moxa Americas

Toll-free: 1-888-669-2872
Tel: +1-714-528-6777
Fax: +1-714-528-6778

Moxa Europe

Tel: +49-89-3 70 03 99-0
Fax: +49-89-3 70 03 99-99

Moxa India

Tel: +91-80-4172-9088
Fax: +91-80-4132-1045

Moxa China (Shanghai office)

Toll-free: 800-820-5036
Tel: +86-21-5258-9955
Fax: +86-21-5258-5505

Moxa Asia-Pacific

Tel: +886-2-8919-1230
Fax: +886-2-8919-1231

Table of Contents

1. Overview	1-1
ioLogik 4000 System Overview	1-2
Package List	1-2
Product Features	1-2
Product Specifications	1-3
2. Hardware Installation	2-1
System Architecture	2-2
Connecting the Network Adapter to I/O Modules	2-3
Appearance	2-3
Installing I/O Modules on a DIN-Rail	2-4
Removing I/O Modules from a DIN-Rail	2-5
Installing an RTB (Removable Terminal Block)	2-6
Connecting the Power System	2-6
Connecting to the Network	2-7
NA-4010 Ethernet Network Adapter	2-7
NA-4020 RS-485 Network Adapter	2-8
NA-4021 RS-232 Network Adapter	2-8
LED Indicators	2-9
LED Indicators for Network Adapters	2-9
LED Indicators for I/O Modules	2-10
When to Use the Power Expansion Module	2-11
When to Use the Field Power Distributor	2-11
When to Use the Potential Distributor	2-12
Safety Notes	2-12
Installation and Cabling Precautions	2-12
Operating Precautions	2-12
3. Getting Started	3-1
Installing ioAdmin Utility	3-2
Configuring the NA-4010 Ethernet I/O System	3-2
Initializing the IP Address	3-2
Linking the Ethernet I/O System to ioAdmin	3-4
Password Protection	3-6
Reset to Default	3-7
Restart System	3-7
Deleting an I/O Server from the List	3-7
Network	3-8
TCP Socket Timeout Interval	3-9
Watchdog Timer	3-9
Firmware Upgrade	3-10
Exporting the System Configuration	3-10
Remote Monitoring	3-10
I/O Status Refresh Rate	3-10
Checking NA-4010's Ethernet I/O Status via Web Browser	3-11
Entering the Web Console	3-11
Configuring NA-4020/4021's RS-485/RS-232 I/O System	3-12
Setting Communication Parameters	3-12
Linking the RS-485/232 I/O Server to ioAdmin	3-14
Password Protection	3-17
Reset to Default	3-17
Restarting the System	3-18
Deleting an I/O Server from the List	3-18
Watchdog Timer	3-18
Firmware Update	3-18
I/O Status Refresh Rate	3-18
Modbus Address Mapping	3-19
Finding a Modbus Address for I/O Channels	3-19
Exporting Modbus Address Settings	3-19
4. Configuring I/O Modules	4-1
Overview	4-2
On-Line Wiring Guide	4-2
Digital Input Module	4-3
Digital Output Module	4-4
Safe Status	4-4
Analog Input Module	4-5
Analog Output Module	4-6
Safe Status	4-6
Temperature Sensing Modules	4-7

	RTD	4-7
	Thermocouple	4-8
5.	MXIO DLL Library	5-1
	Overview	5-2
	MXIO Function Groups	5-2
A.	Pinouts and Cable Wiring	A-1
	Port Pinout Diagrams	A-2
	Ethernet Port Pinouts	A-2
	Serial Port Pinouts	A-2
	Ethernet Cable Wiring Diagrams	A-3

The ioLogik 4000 is a stand-alone Active Ethernet I/O server that can connect sensors and on/off switches for automation applications over Ethernet and IP-based networks.

The following topics are covered in this chapter:

- ❑ **ioLogik 4000 System Overview**
- ❑ **Package List**
- ❑ **Product Features**
- ❑ **Product Specifications**

ioLogik 4000 System Overview

ioLogik 4000 is a Network I/O Server that can connect sensors and on/off devices in any combination and can transfer the captured data or device status to a host computer via an Ethernet or RS-485/232 network.

ioLogik 4000 consists of two main parts. The Network Adapter provides system and field power to connected I/O modules. Three kinds of Network Adapter are available, including Ethernet, RS-485, and RS-232 interfaces. Up to 32 I/O modules can be connected to one Network Adapter.



Network Adapter I/O expansion modules up to 32 slots
(Up to 512 DIOs or 128 AIOs)

Network Adapter		Digital Input		Digital Output		Analog Input		Analog Output		Special Modules	
Types		Types	Ch.	Types	Ch.	Types	Ch.	Types	Ch.	Types	Ch.
Ethernet	~	24Vdc	8,16	24Vdc	8,16	4-20mA	8	4-20mA	4	Encoder (24V)	1
RS-485	~	48Vdc	4	125VAC	4	0-10V	8	0-10V	4		
RS-232	~	110VAC	4	230VAC	4	RTD	2				
		230VAC	4			TC	2				

Package List

Each Network Adapter and I/O module is packed securely in a small cardboard box.

Network Adapter

- NA-40xx network adapter × 1

I/O Module

- M-xxxx I/O module × 1

Product Features

Detailed specifications of ioLogik 4000 are available in the software's product specification help files. Refer to the help file for more information.

- Remotely acquire sensor data and control I/O points via Ethernet, RS-232, or RS-485.
- Supports up to 40 types of digital and analog I/O modules.
- Expandable up to 32 modules for a maximum of 512 digital I/O points or 128 analog input channels.
- Modular, slice-type package with Removable Terminal Block for fast swap and maintenance.
- Supports standard Modbus/TCP up to 8 concurrent sessions for Ethernet Network Adapters.
- Supports standard Modbus/RTU/ASCII for RS-485/RS-232 Network Adapters.
- Easy-to-use ioAdmin utility for remote and local management.
- Easy-to-use DLL library for easy user programming.

Product Specifications

ioLogik 4000's detailed specifications are available in the software's product specification help files. Refer to the help file for more information. Models supported by this manual are:

Model Name	Network Adapter
NA-4010	Ethernet Network Adapter Modbus/TCP
NA-4020	RS-485 Network Adapter Modbus/RTU
NA-4021	RS-232 Network Adapter Modbus/RTU

Model Name	Digital Input
M-1800	8 DI, sink, 24 VDC, RTB
M-1801	8 DI, source, 24 VDC, RTB
M-1600	16 DI, sink, 24 VDC, RTB
M-1601	16 DI, source, 24 VDC, 20-pin
M-1450	4 DI, 110 VAC, RTB
M-1451	4 DI, 220 VAC, RTB

Model Name	Digital Output
M-2800	8 DO, sink, MOSFET, 24 VDC, 0.5A, RTB
M-2801	8 DO, source, MOSFET, 24 VDC, 0.5A, RTB
M-2600	16 DO, sink, MOSFET, 24 VDC, 0.3A, 20-pin
M-2601	16 DO, source, MOSFET, 24 VDC, 0.3A, 20-pin
M-2450	4 DO, Relay, 230VAC, 24 VDC, 2.0A, RTB

Model Name	Analog Input
M-3802	8 AI, Current, 4-20 mA, 12-bit, RTB
M-3810	8 AI, Voltage, 0-10V, 12-bit, RTB
M-6200	2 AI, RTD:PT100, JPT100 300 Ohm, RTB
M-6201	2 AI, Thermocouple: 30 mV(1uV/bit), RTB

Model Name	Analog Output
M-4402	4 AO, 4-20 mA, 12-bit, RTB
M-4410	4 AO, Voltage, 0-10V, 12-bit, RTB

Hardware Installation

This chapter includes information about installing ioLogik 4000 I/O Server, including the Ethernet Network Adapter and RS-485, RS-232 Network Adapters. The following topics are covered:

The following topics are covered in this chapter:

- ❑ **System Architecture**
- ❑ **Connecting the Network Adapter to I/O Modules**
 - Appearance
 - Installing I/O Modules on a DIN-Rail
 - Removing I/O Modules from a DIN-Rail
 - Installing an RTB (Removable Terminal Block)
- ❑ **Connecting the Power System**
- ❑ **Connecting to the Network**
 - NA-4010 Ethernet Network Adapter
 - NA-4020 RS-485 Network Adapter
 - NA-4021 RS-232 Network Adapter
- ❑ **LED Indicators**
 - LED Indicators for Network Adapters
 - LED Indicators for I/O Modules
- ❑ **When to Use the Power Expansion Module**
- ❑ **When to Use the Field Power Distributor**
- ❑ **When to Use the Potential Distributor**
- ❑ **Safety Notes**
 - Installation and Cabling Precautions
 - Operating Precautions

System Architecture

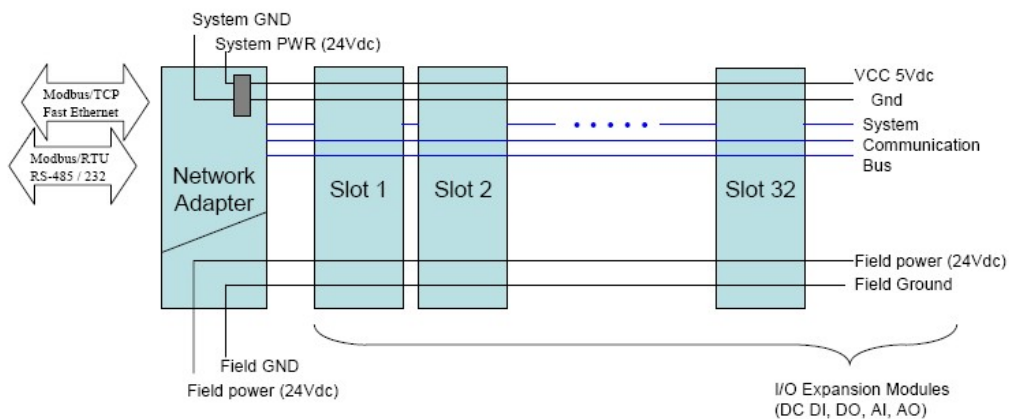
The ioLogik 4000 Slice-type I/O Server consists of a Network Adapter that supports Ethernet, RS-485 or RS-232, and up to 32 I/O modules.

ioLogik 4000's Network Adapter is the brains of the system. Its responsibility is to collect information from each I/O module, and decide the parameters for the I/O module's operation. Communication between the Network Adapter and I/O modules is achieved by a system communication bus.

Modbus Addresses for each I/O channel are arranged dynamically by the Network Adapter, according to the installed I/O modules.

The Network Adapter requires two sets of 24 VDC power inputs. One is for the internal logic circuit, and the other is for field I/O circuits.

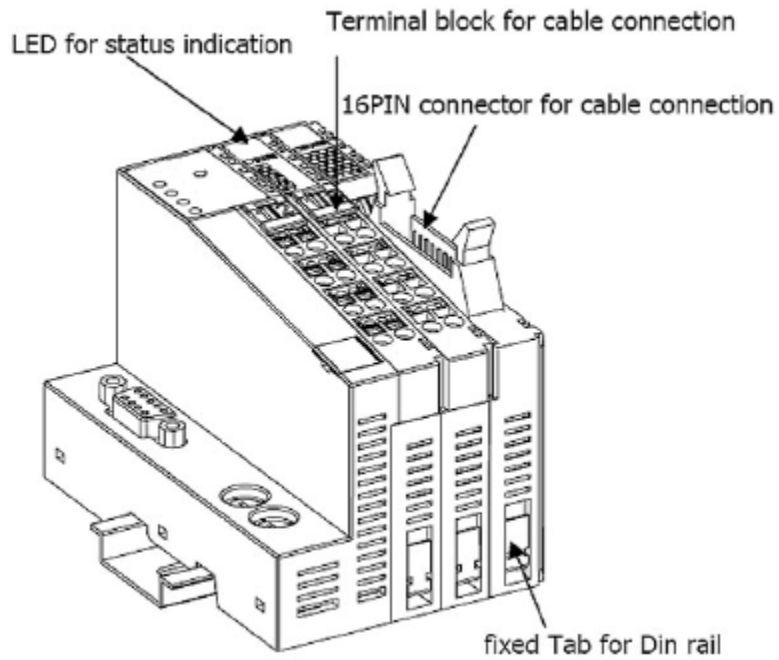
The Network Adapter provides 5 VDC power to all connected I/O modules. When the total current consumption of the I/O modules exceeds 1.5A, you will need to insert an extra power expansion module. To determine how many power expansion modules are required, refer to the spreadsheet in the Start-Program Files-ioLogik-Utility.



Connecting the Network Adapter to I/O Modules

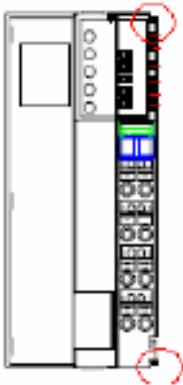
This section describes how to install ioLogik 4000 I/O modules with the Network Adapter.

Appearance

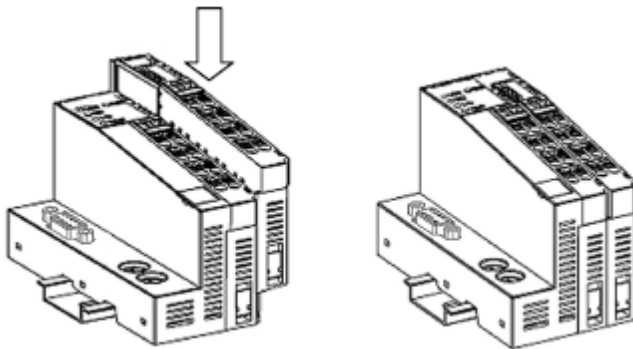


Installing I/O Modules on a DIN-Rail

Step 1: Align the I/O module and Network Adapter side by side, making sure the upper and lower rails are hooked.

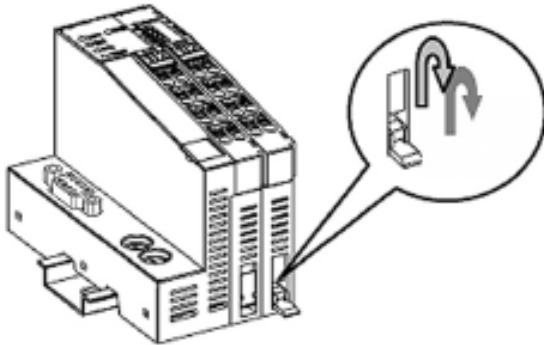


Step 2: Push the I/O module along the inner rail until it touches the DIN-Rail, and then push hard to clip it onto the DIN-Rail.

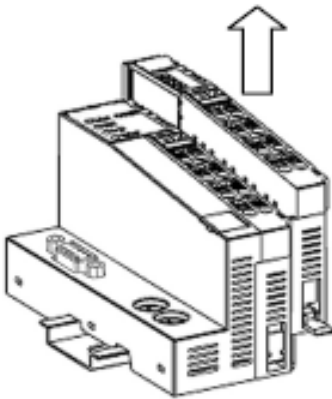


Removing I/O Modules from a DIN-Rail

Step 1: Use your finger or a screw driver to push down the tab located on the lower part of the module.



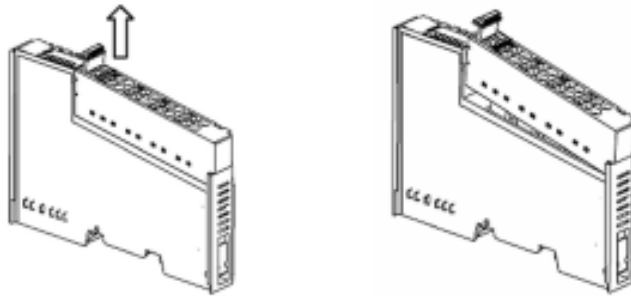
Step 2: Pull out the I/O module.



Installing an RTB (Removable Terminal Block)

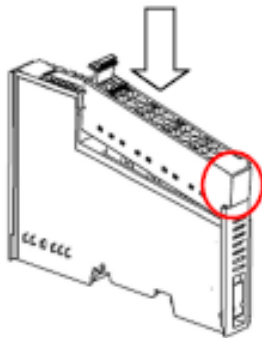
Removing the RTB from the I/O module

Pull hard to remove the plastic belt from the RTB.



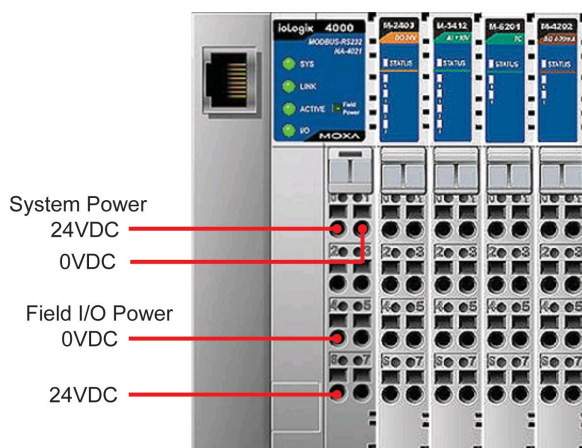
Installing the RTB on the I/O module

Align the lower part of the terminal block with the I/O module, and then push the RTB so that it fits into the I/O module.



Connecting the Power System

Two 24 VDC power sources are required to activate ioLogik 4000. One 24 VDC power input is for system power, and the other 24 VDC power input is for field I/O. For field installation, system power and field power are provided by different power supply systems.

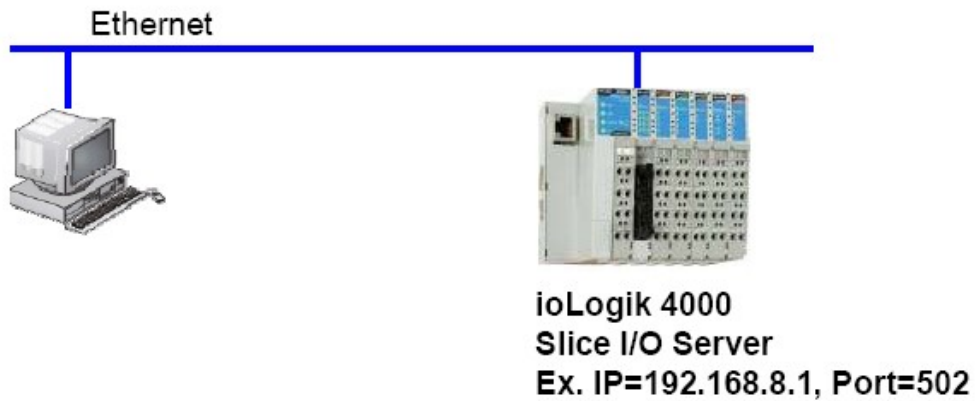


Connecting to the Network

NA-4010 Ethernet Network Adapter

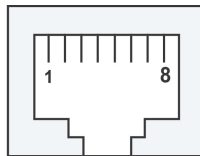
NA-4010 Ethernet Network Adapter supports standard 10/100 Mbps Ethernet. For first time users, we recommend that you link from your host computer to NA-4010 over a local Ethernet network to take care of IP and system configuration. Once the installation is done, you may move the Ethernet I/O system to the field.

Connecting Single Ethernet I/O Server



Ethernet pin assignments

Pin	Signal
1	Tx+
2	Tx-
3	Rx+
6	Rx-



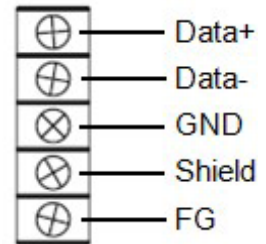
NA-4020 RS-485 Network Adapter

For first time installation, we recommend that you connect the NA-4020 RS-485 Network Adapter to a host computer running the ioAdmin utility to take care of configuration. Once the I/O system is configured, you can move the entire system to the field.

Connecting Single Serial I/O Server



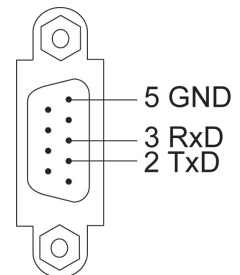
The figure to the right shows the pin assignment of NA-4020's RS-485 port.



NA-4021 RS-232 Network Adapter

For first-time installations, the NA-4021 RS-232 Network Adapter should be connected to a host computer running ioAdmin for system configuration.

The figure to the right shows pin assignments for the NA-4021 RS-232 port.



LED Indicators

This section describes the LED indicators on the ioLogik 4000 system.

LED Indicators for Network Adapters

The NA-4010 Ethernet Network Adapter has 5 LED indicators, as described in the following table.

LED Name	LED Color	LED Function
SYS	Off	No power.
	Green	Steady On: Operating condition normal.
	Red/Green	Toggling: Modbus error (e.g., watch dog timer error)
	Red	Steady On: EEPROM checksum error. Flashing: Memory error or CPU watchdog error. * Please contact your vendor for assistance.
LINK	Green	Ethernet connected.
ACTIVE	Green	Flashing: Transmitting or Receiving data over Ethernet.
I/O	Off	No I/O module detected.
	Green	Steady On: System bus to I/O modules is running normally. Flashing: System bus to I/O modules ready. But the Network Adapter is not exchanging data with I/O modules.
	Red	Steady On: System bus communication failure. Flashing: One or more I/O modules are in an error state. * The following situations may cause a red I/O LED. a. I/O module plugged in during operation. b. I/O module not firmly locked on the rail. c. One of the modules is damaged.
Field Power	Off	24 VDC field power is not connected
	Green	24 VDC field power detected

The NA-4020/21 RS-485, RS-232 Network Adapter has 5 LED indicators, as described in the following table.

LED Name	LED Color	LED Function
SYS	Off	No power.
	Green	Steady On: Operating condition normal.
	Red/Green	Toggling: Modbus error (e.g., watch dog timer error)
	Red	Steady On: EEPROM checksum error. Flashing: Memory error or CPU watchdog error. * Please contact your vendor for assistance.
RxD	Off	No power or communication.
	Green	Flashing: Receiving data from the serial port.
TxD	Off	No power or communication.
	Green	Flashing: Sending data to the serial port.
I/O	Off	No I/O module detected.
	Green	Steady On: System bus to I/O modules is running normally. Flashing: System bus to I/O modules ready. But the Network Adapter is not exchanging data with I/O modules.
	Red	Steady On: System bus communication failure. Flashing: One or more I/O modules are in an error state. * The following situations may cause a red I/O LED. a. I/O module plugged in during operation. b. I/O module not firmly locked on the rail. c. One of the modules is damaged.
Field Power	Off	No 24 VDC field power
	Green	24 VDC field power detected

LED Indicators for I/O Modules

Each DIO or AIO module is equipped with a Module Status LED indicating operation status.

LED Name	LED Color	LED Function
Status	Off	Not powered on during initialization.
	Green	Steady On: System ready. Flashing: I/O module ready for communication.
	Red	Steady On: I/O module hardware problem. Flashing: System bus communication error.

Each DIO or AIO channel is equipped with Channel Status LEDs. Refer to Chapter 4 for more information.

When to Use the Power Expansion Module

When the total current consumption for connected I/O modules exceeds 1.5A, an M-7001 power expansion module is required.

The following table can be used to calculate if an extra power expansion module is needed. In **Program Files → ioLogik → Utility**, click on Power Consumption Spreadsheet. The spreadsheet requires Microsoft Excel to operate. Once you enter the I/O module quantity, you will know how many power expansion modules are required.

When extra power expansion modules are installed in the ioLogik 4000 I/O Server, restart the system in the following sequence to ensure a proper start-up.

Power Off Sequence

1. Unplug the Network Adapter's terminal block.
2. Unplug the expansion module's terminal block.

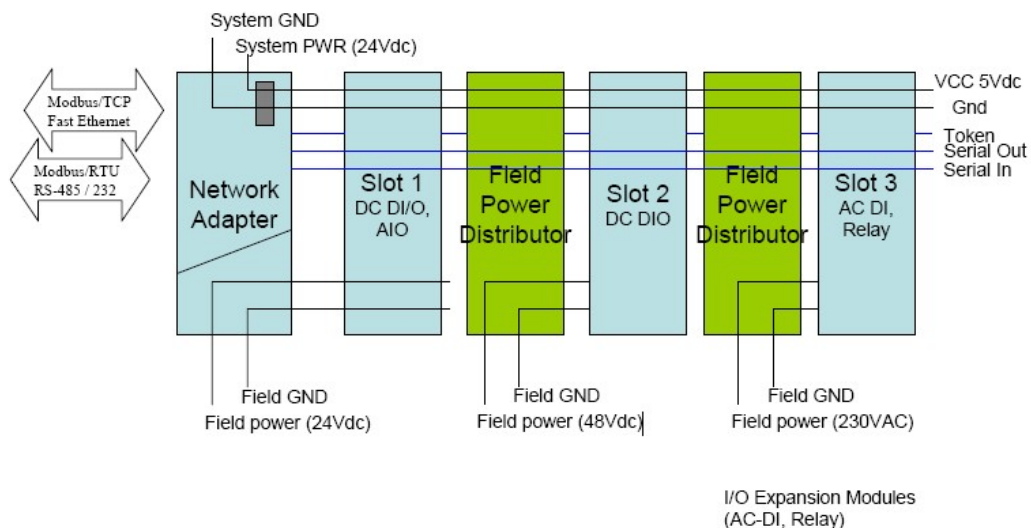
Power Up Sequence

1. Plug in the power expansion module's terminal block.
2. Plug in the Network Adapter's terminal block.

When to Use the Field Power Distributor

Most of the field power DIO/AIO modules for the ioLogik 4000 series are 24 VDC. If you need to connect 48 VDC or 110 VAC, 230 VAC digital input or output modules, you must use the Field Power Distributor to isolate different field powers within a single ioLogik 4000 system.

If all of the DIO modules are 110 VAC, you will need at least one field power distributor to isolate the field power from the Network Adapter (likewise when using 48 VDC or 230 VAC).



When to Use the Potential Distributor

Three types of Potential Distributor module provide extra wiring points, such as shielding ground, field power 0V, and field power 24V.

For example, the 8-channel digital input (sink type) module itself does not have a 24V wiring point. You may add a 24V Potential Distributor for easy wiring.

Safety Notes

Installation and Cabling Precautions

- Check the rated voltage and current for the products before wiring.
- Use the rated power supply and specified cables. Using the wrong power supply could cause a fire.
- Cabling should be done by a certified electrician according to the Electricity Engineering Regulations.
- Improper cabling could cause a fire, or electric shock.

Operating Precautions

- Do not touch the terminal when the power is on to avoid electric shock.
- Do not assemble the product when the power is on.
- Do not modify the wiring while operating the product.
- Pay attention to the power linkage procedure. An incorrect process flow could lead to mechanical damage or other hazards.

**ATTENTION**

The End Module should be covered in to prevent unexpected damage from exposure of the data pin.

Getting Started

This chapter introduces the method you should follow when configuring the ioLogik 4000 Ethernet I/O system and ioLogik 4000 RS-485/232 I/O system.

The following topics are covered in this chapter:

❑ **Installing ioAdmin Utility**

❑ **Configuring the NA-4010 Ethernet I/O System**

- Initializing the IP Address
- Linking the Ethernet I/O System to ioAdmin
- Password Protection
- Reset to Default
- Restart System
- Deleting an I/O Server from the List
- Network
- TCP Socket Timeout Interval
- Watchdog Timer
- Firmware Upgrade
- Exporting the System Configuration
- Remote Monitoring
- I/O Status Refresh Rate

❑ **Checking NA-4010's Ethernet I/O Status via Web Browser**

- Entering the Web Console

❑ **Configuring NA-4020/4021's RS-485/RS-232 I/O System**

- Setting Communication Parameters
- Linking the RS-485/232 I/O Server to ioAdmin
- Password Protection
- Reset to Default
- Restarting the System
- Deleting an I/O Server from the List
- Watchdog Timer
- Firmware Update
- I/O Status Refresh Rate

❑ **Modbus Address Mapping**

- Finding a Modbus Address for I/O Channels
- Exporting Modbus Address Settings

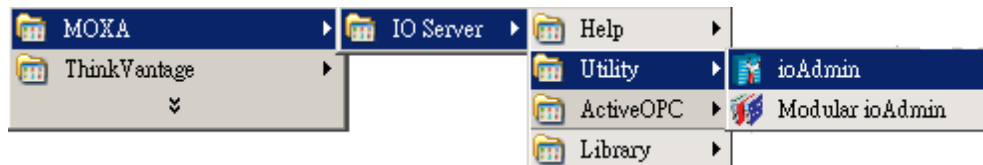
Installing ioAdmin Utility

ioAdmin can be downloaded from Moxa's website.

1. Installing ioAdmin from website:

- a. First click on the following link to access the website's search utility:
<http://www.moxa.com/support/search.aspx?type=soft>
- b. When the web page opens, enter the model name of your product in the search box.
- c. Click the model name and navigate to the product page, and then click on Utilities, located in the box titled Software.
- d. Download and then unzip the file. Run **SETUP.EXE** from that location.
The installation program will guide you through the installation process and install the software.

2. Open ioAdmin: After installation is finished, run ioAdmin from the Windows Start menu: **Start → Program Files → MOXA → IO Server → Utility → ioAdmin.**



Configuring the NA-4010 Ethernet I/O System

Initializing the IP Address

1. Check the MAC Address, which is located on the label on the left side of the Network Adapter. You may use it to reconfigure the IP address at a later time.
2. Determine whether your ioLogik 4000 needs to use a Static IP or Dynamic IP (BOOTP application).
3. *If ioLogik 4000 is used in a Static IP environment, you can use ioAdmin to configure the new IP address. The factory default IP address is 192.168.127.254.*
4. *If ioLogik 4000 is used in a Dynamic IP environment, you can use ioAdmin to make sure BOOTP is enabled. The factory default for BOOTP is "enabled."*

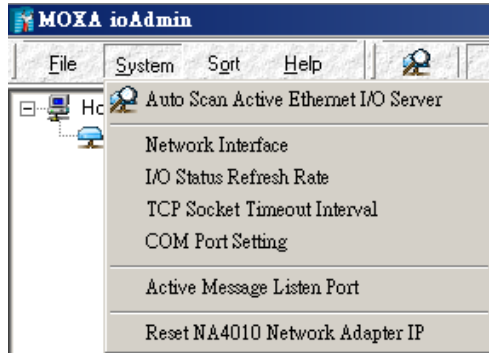


ATTENTION

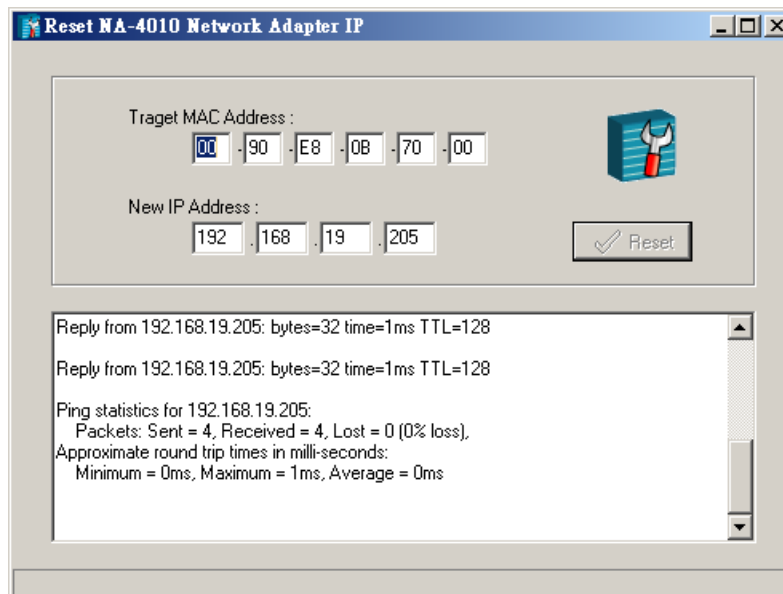
Consult your network administrator if you do not know how to reserve a fixed IP address for your ioLogik 4000 in the MAC-IP mapping table when using a BOOTP Server. In most applications, you should assign a fixed IP address to your ioLogik 4000.

5. To set a new IP address for an Ethernet I/O server, run ioAdmin, and then click on **Reset NA 4010**

Network Adapter IP.



Enter the MAC Address of the NA-4010, and the new IP address. To complete the configuration, click on **Reset**.



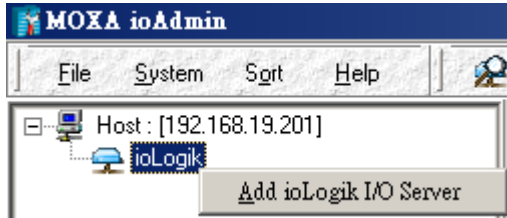
ioAdmin automatically changes the IP address and tests the new IP.

6. In case you do not have ioAdmin installed on your host computer, you may use the ARP command manually to set a new IP address for the NA-4010.

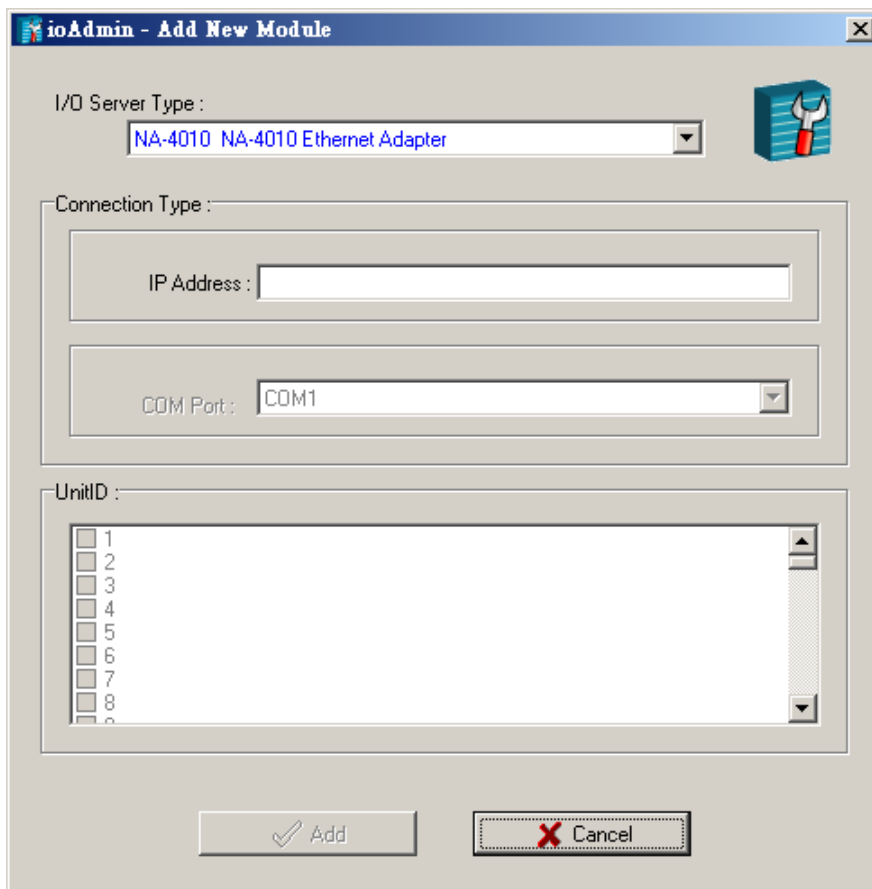
Select **Ethernet adapter**, and then click on **Start Search**. ioAdmin will start searching for installed NA-4010's on the network.

The Auto Search function can only find Ethernet I/O Servers that are on the same subnet. To connect to Ethernet I/O Servers outside the subnet, you will need to add the Ethernet I/O server manually.

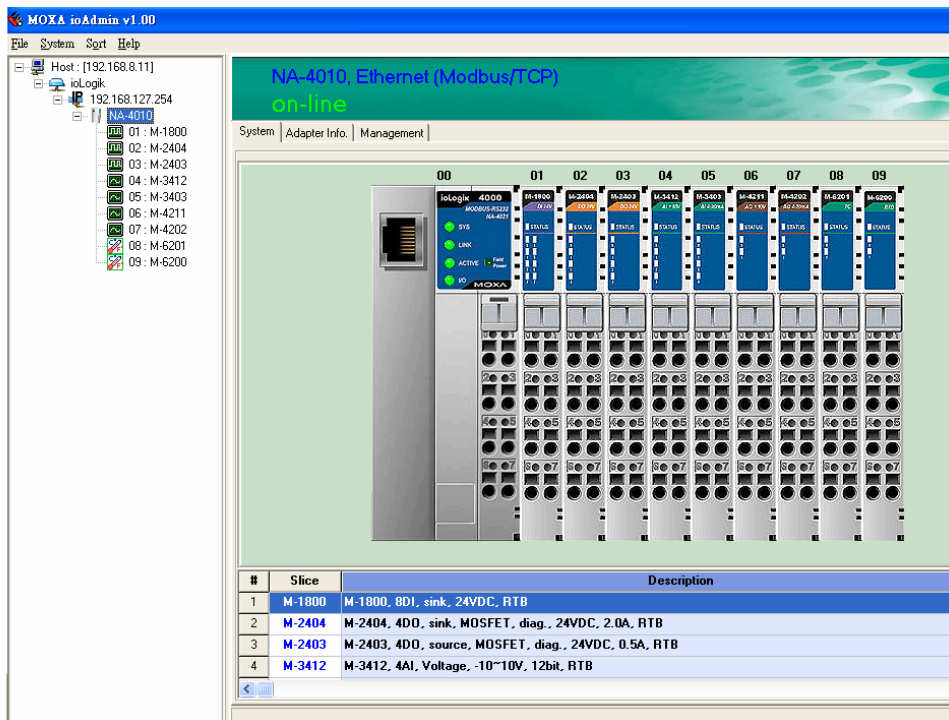
To input the Network Adapter's IP address manually, press the **right mouse key**, and then click on **ioLogik** in the left ioAdmin frame.



Click on NA-4010, and then enter the IP address.



After using auto search, or keying in the ioAdmin IP address manually, the Ethernet I/O servers that were located will appear as follows.



The left frame of ioAdmin shows the I/O Servers connected to the network that were located by the search process. The upper right frame indicates the combination of all I/O modules by slot number. The lower right frame lists detailed information for installed I/O modules.

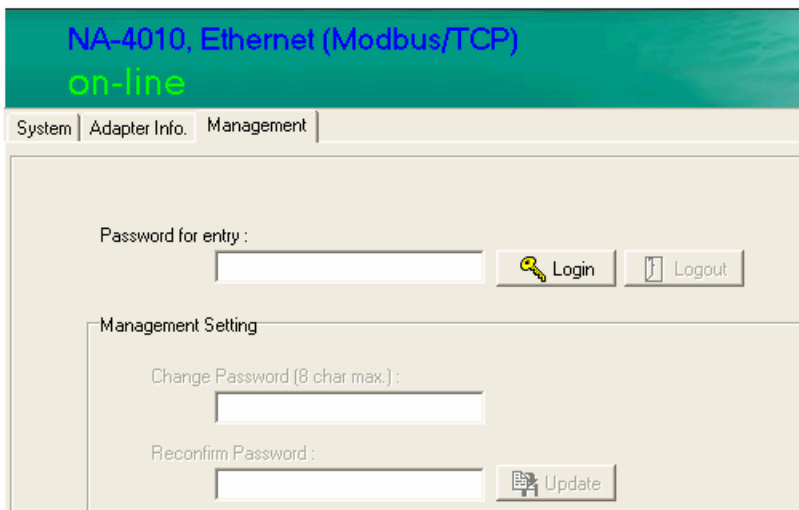
If you move the mouse cursor over any of the I/O modules, the model name and description will be displayed automatically.

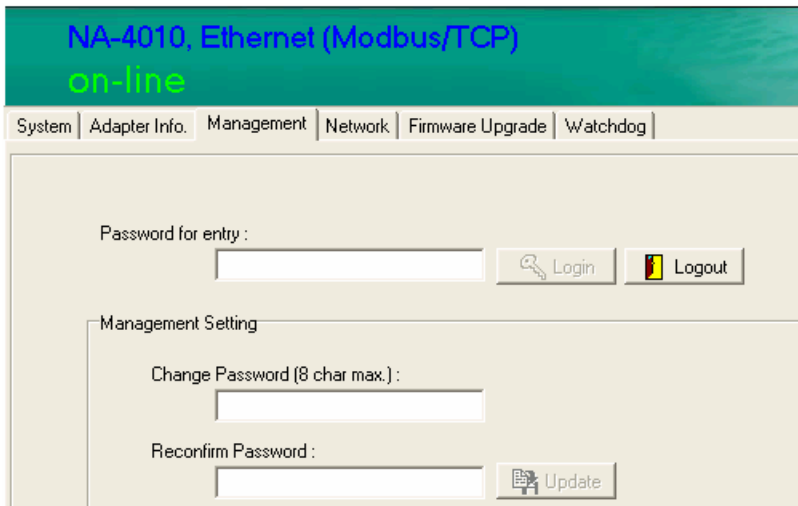
At this point, your Ethernet I/O system should be up and running. The next section explains additional ioLogik 4000 management issues. You may also jump to Chapter 4 and check the status for each I/O channel.

Password Protection

Network configuration, Firmware Upgrade, Watchdog configuration, Reset to Default, and Restart System can all be protected by a password to prevent unauthorized access.

The password is **blank** by default. If there you have not set a password, you may click on **Login** to show the tabs for firmware upgrade, network configuration, and watchdog configuration.





Reset to Default

The Network Adapter settings, including IP address, netmask, gateway, watchdog timer, I/O module safety status, and temperature sensor parameters are stored in the network adapter.

Right click on the target I/O server, and then click on **Reset to Default** to proceed. You may need to wait 10 seconds or longer. ioAdmin will reconnect the I/O Server automatically.

Note that this function requires password authorization to activate.

Default values for NA-4010 Ethernet Network Adapter are as follows.

Bootp: on

ARP: on

IP: 192.168.127.254

Network mask: 255.255.0.0

Gateway: (Empty)

Modbus watchdog: disable

Watchdog timeout: 60 sec (120 x 0.5sec)

Password: Empty

Restart System

In general, you do not need to restart the I/O server when changing I/O module configurations. However, when the I/O Server indicates an I/O error, you may use this function to restart the I/O Server system remotely.

Right click on the target I/O server, and then click on Restart System to proceed. You may need to wait 10 seconds or longer. ioAdmin will reconnect the I/O Server automatically.

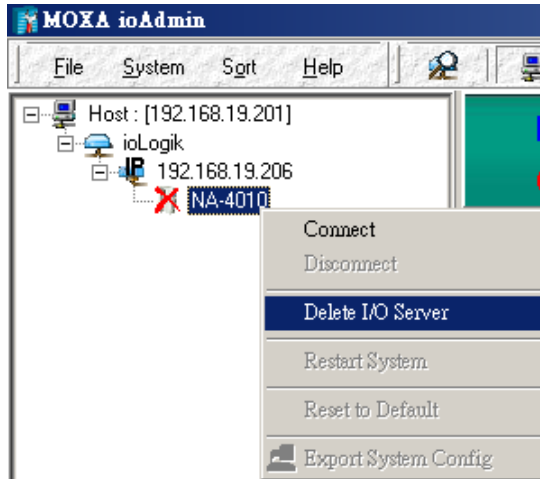
Note that this function requires password authorization to activate.

Deleting an I/O Server from the List

When several I/O Servers appear in ioAdmin's left frame, you can delete I/O Servers from the list to make your management task easier.

Right click on the target I/O Server and then press **Disconnect**. **Right click** on the target I/O Server and then press **Delete I/O Server**. The target I/O Server will be removed from the list.

Note that this function requires disconnected from the ioLogik to activate.



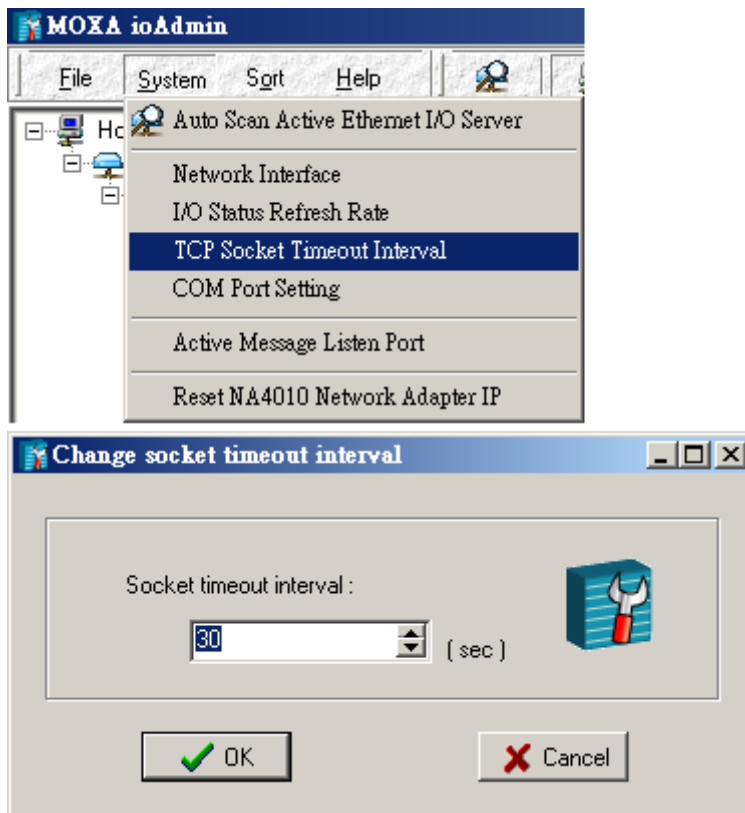
Network

Click on the Network Adapter's **Network** tab to change the IP Address, Network Mask, Gateway, and MAC address. There are two options for IP configuration: **Bootp** and **ARP**. We strongly recommend that you leave **ARP ON** to reserve the opportunity to modify the IP address when necessary.

The option **Enable Modbus/TCP idle connection timeout interval**: is used to determine the interval time for the Ethernet Network Adapter to disconnect the Modbus/TCP connection automatically when the host computer didn't send any packets via the Ethernet network. When the value is "0," the Ethernet Network Adapter remains connected unless the host computer actively disconnects the Modbus/TCP.

TCP Socket Timeout Interval

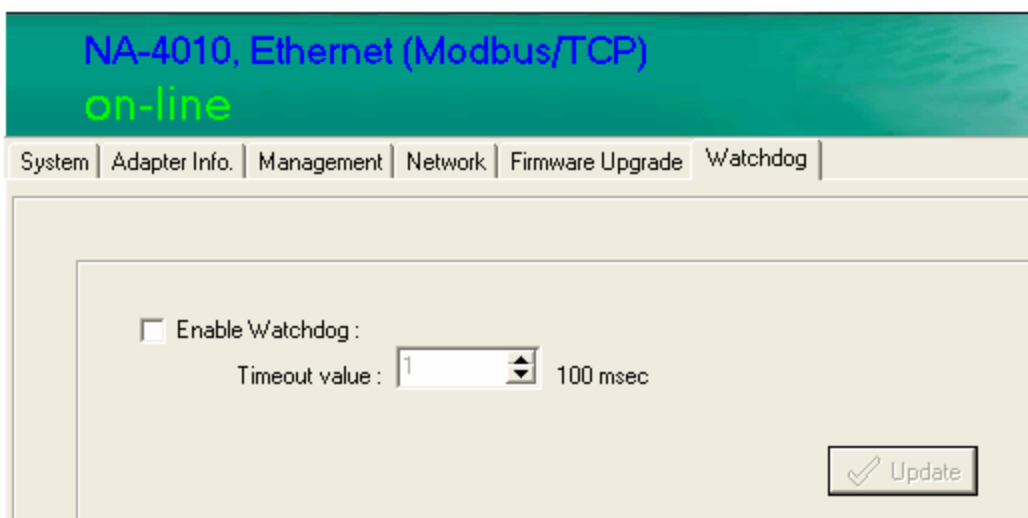
The **Socket timeout interval** in the **System** menu is used to configure the timeout for each Modbus/TCP query from the host computer to the Ethernet Network Adapter. The unit is seconds.



Watchdog Timer

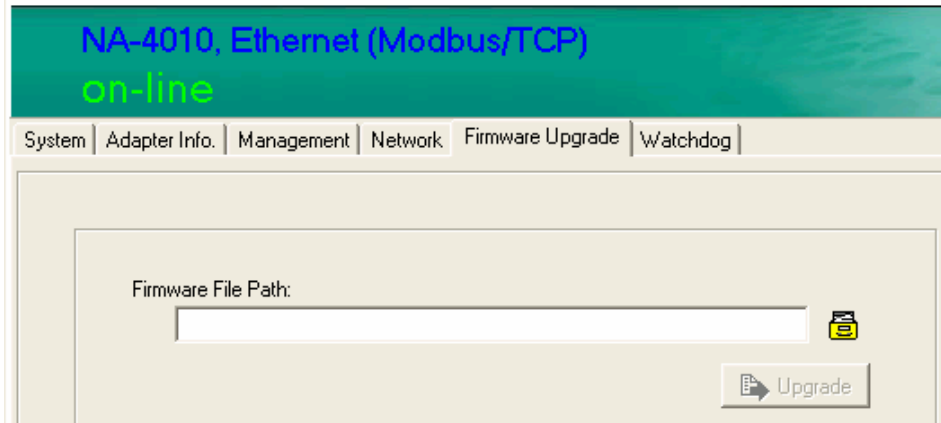
The Watchdog timer function is used to monitor the Modbus/TCP connection between the Ethernet Network Adapter and the host computer. The default is "off."

When there are no queries from the host computer over a preset time (in 100 msec increments), the Ethernet Network Adapter sets all digital output and analog output values to a predefined Safe Status. The maximal value of the Timeout Value is 65535, which means 6553.5 seconds.



Firmware Upgrade

NA-4010's firmware can be updated via Ethernet. To upgrade the firmware, click on "Firmware Upgrade" tab.



Click on the file icon and select the firmware. Press **Upgrade** when you're ready. During the firmware upgrade, DO NOT turn the ioLogik 4000's power off.

Exporting the System Configuration

To help you record the I/O module combination and parameters, ioAdmin can generate a text report file that can help you manage the system.

The report consists of following parts.

1. Date, Time, and Firmware version
2. Slice Models
3. Slice Configuration
4. Modbus address table

Remote Monitoring

NA-4010 Ethernet Network Adapter allows up to 8 concurrent TCP connections. The benefit is that ioAdmin still can monitor the status of the Ethernet I/O server when it's in operation.

I/O Status Refresh Rate

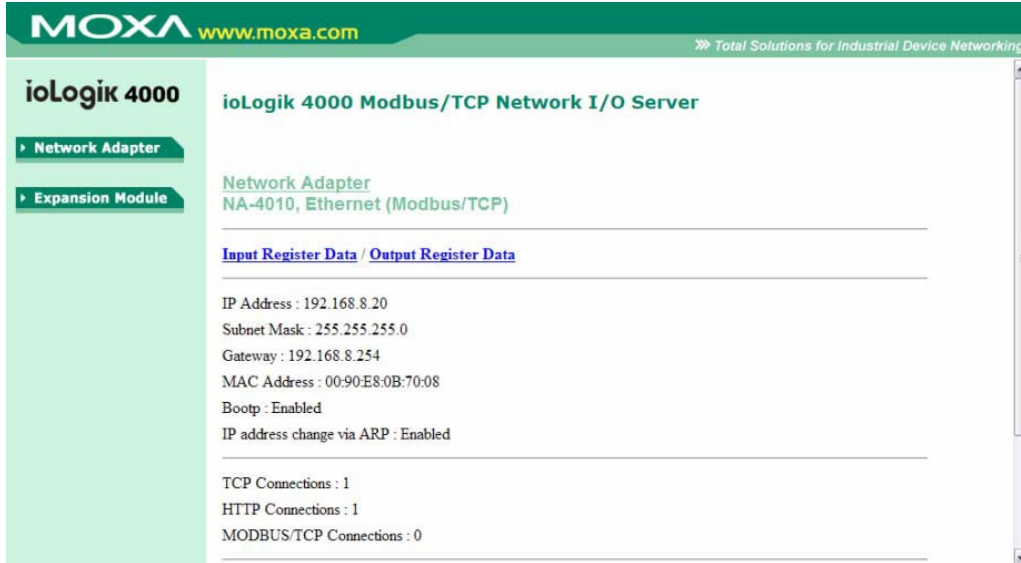
The parameter determines how often ioAdmin utility polls all connected I/O Servers. The default value is 50 (500 msec). To change the configuration, click **I/O Status Refresh Rate** under the **System** menu, and then adjust the data refresh rate. Note that the unit is in 10 msec increments, so if you enter 50, the refresh rate becomes 0.5 sec.

Checking NA-4010's Ethernet I/O Status via Web Browser

Entering the Web Console

The main configuration interface for ioLogik 4000 relies on ioAdmin utility. However, for NA-4010 Ethernet Network Adapter's web console, information for basic system status is available.

Enter the IP address of the Ethernet I/O server in Internet Explorer.



The screenshot shows the Moxa web console interface. The header includes the Moxa logo and website URL. The main content area is titled "ioLogik 4000 Modbus/TCP Network I/O Server". On the left, there is a navigation menu with "Network Adapter" and "Expansion Module" options. The "Network Adapter" section is active, displaying the following information:

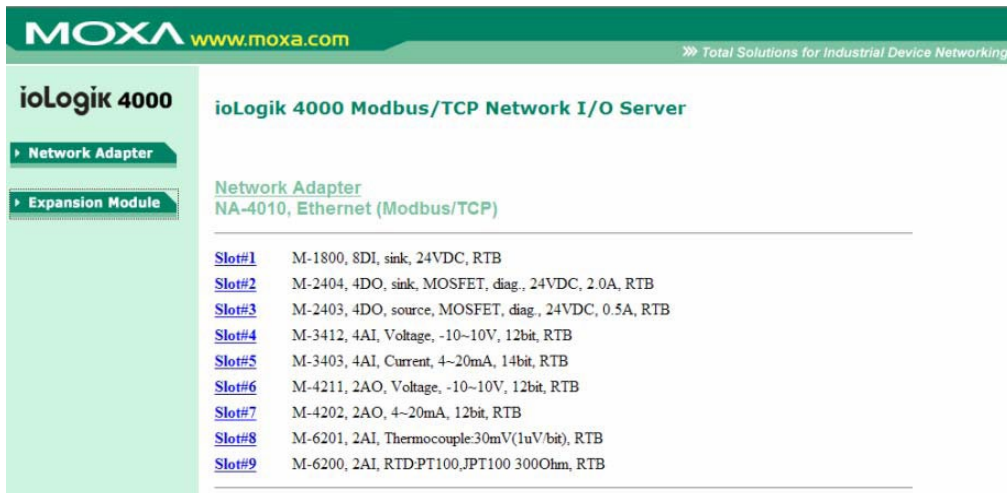
Network Adapter
NA-4010, Ethernet (Modbus/TCP)

[Input Register Data](#) / [Output Register Data](#)

IP Address : 192.168.8.20
Subnet Mask : 255.255.255.0
Gateway : 192.168.8.254
MAC Address : 00:90:E8:0B:70:08
Bootp : Enabled
IP address change via ARP : Enabled

TCP Connections : 1
HTTP Connections : 1
MODBUS/TCP Connections : 0

You may check network configuration status and firmware number on the homepage. Click on **Expansion Module** to see the information for all connected modules.



The screenshot shows the Moxa web console interface. The header includes the Moxa logo and website URL. The main content area is titled "ioLogik 4000 Modbus/TCP Network I/O Server". On the left, there is a navigation menu with "Network Adapter" and "Expansion Module" options. The "Expansion Module" section is active, displaying the following information:

Network Adapter
NA-4010, Ethernet (Modbus/TCP)

Slot#1	M-1800, 8DI, sink, 24VDC, RTB
Slot#2	M-2404, 4DO, sink, MOSFET, diag., 24VDC, 2.0A, RTB
Slot#3	M-2403, 4DO, source, MOSFET, diag., 24VDC, 0.5A, RTB
Slot#4	M-3412, 4AI, Voltage, -10~10V, 12bit, RTB
Slot#5	M-3403, 4AI, Current, 4~20mA, 14bit, RTB
Slot#6	M-4211, 2AO, Voltage, -10~10V, 12bit, RTB
Slot#7	M-4202, 2AO, 4~20mA, 12bit, RTB
Slot#8	M-6201, 2AI, Thermocouple:30mV(1uV/bit), RTB
Slot#9	M-6200, 2AI, RTD:PT100,JPT100 300Ohm, RTB

Click on the slot number to see the status of each module. The following example is for the thermocouple module.

MOXA www.moxa.com » Total Solutions for Industrial Device Networking

ioLogik 4000

ioLogik 4000 Modbus/TCP Network I/O Server

Network Adapter

Expansion Module

Slot#8

M-6201, 2AI, Thermocouple:30mV(1uV/bit), RTB

Configuration Parameter Data[Hex] = 00 10
Input Data[Hex] = 012C 0136

Sensor Type : K
Temperature unit : Celsius
Temperature Ch0 : 30.0
Temperature Ch1 : 31.0

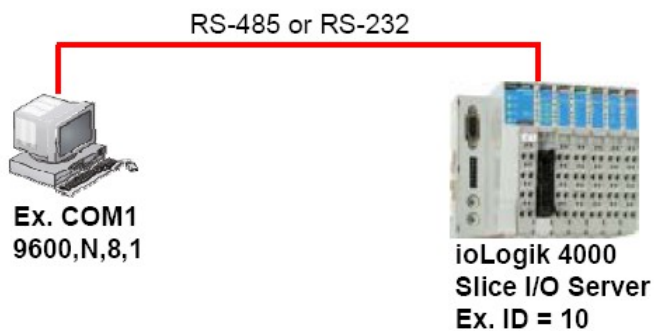
[Prev Slot](#) [Next Slot](#)

Configuring NA-4020/4021's RS-485/RS-232 I/O System

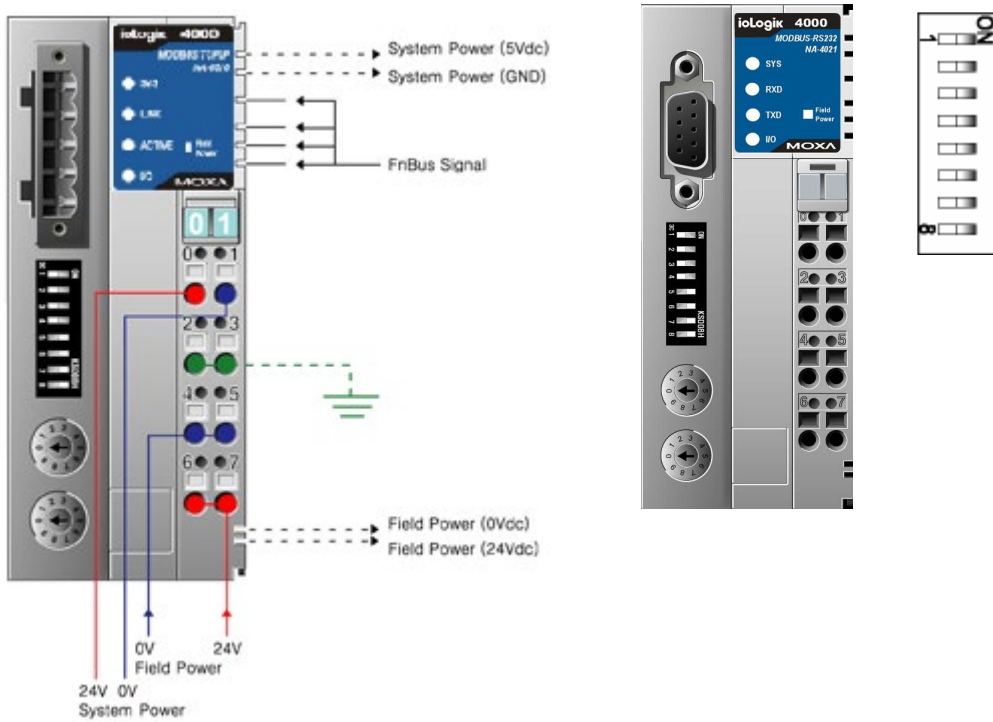
Setting Communication Parameters

For first time users, link NA-4021's RS-232 Network Adapter to the host computer. Make sure the computer is equipped with an RS-232 communication port. For NA-4020's RS-485 Network Adapter, use a DB9 cable with correct wiring to connect to the host computer. You may need to add a Moxa multiport serial board (such as CP-132U) or USB to Serial Hub (NPort 1220) to expand the number of COM ports.

Connecting Single Serial I/O Server



There is a DIP switch on NA-4020/4021's front panel that allows you to configure the parameters manually.



DIP Switch Configuration Table

No.	Configuration	Settings
1-3	Baud Rate	1 2 3
		OFF OFF OFF 1200 bps
		ON OFF OFF 2400 bps
		OFF ON OFF 4800 bps
		ON ON OFF 9600 bps
		OFF OFF ON 19200 bps
		ON OFF ON 38400 bps
		OFF ON ON 57600 bps
ON ON ON 115200 bps		
4	Watchdog	ON: Enable OFF: Disable
5-7	Communication Parameters	5 6 7
		OFF OFF OFF None, 8 data bits, 1 stop bit
		ON OFF OFF Even, 8 data bits, 1 stop bit
		OFF ON OFF Odd, 8 data bits, 1 stop bit
		ON ON OFF None, 8 data bits, 2 stop bits
		OFF OFF ON None, 7 data bits, 2 stop bits *1
		ON OFF ON Even, 7 data bits, 1 stop bit*1
		OFF ON ON Odd, 7 data bits, 1 stop bit*1
ON ON ON None, 8 data bits, 1 stop bit		
8	Modbus protocol	ON: Modbus/ASCII OFF: Modbus/RTU

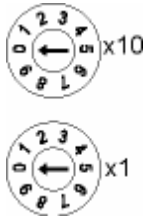
* 1. Only Modbus/RTU is supported when data bits is 7.

* 2. Default value is 9600, N, 8, 1. Watchdog disabled. Modbus/RTU.

Note that ioAdmin only accepts operation under Modbus/RTU.

The next step is to configure the Unit ID for the I/O Server. In a Modbus/RTU/ASCII serial network, each node must have a unit ID that ranges from 01 to 99. Use a screw driver to rotate the switch and set the Unit ID. The upper switch represents the high digit, whereas the lower switch represents the low digit.

Note that the address 00, which is usually used in the Modbus/RTU/ASCII master, is reserved for broadcasts.



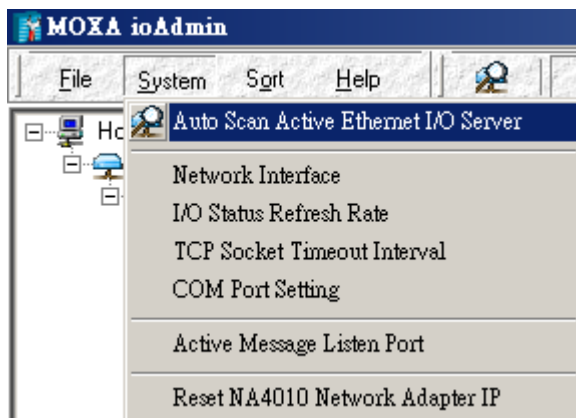
Linking the RS-485/232 I/O Server to ioAdmin

After you connect the RS-485/232 I/O Server to the host computer's COM port (e.g., COM2) via the DB9 cable, and the I/O server is powered on, you can start up ioAdmin. Set the communication parameters to 9600,N,8,1 for both the host computer's COM port and the serial Network Adapter.

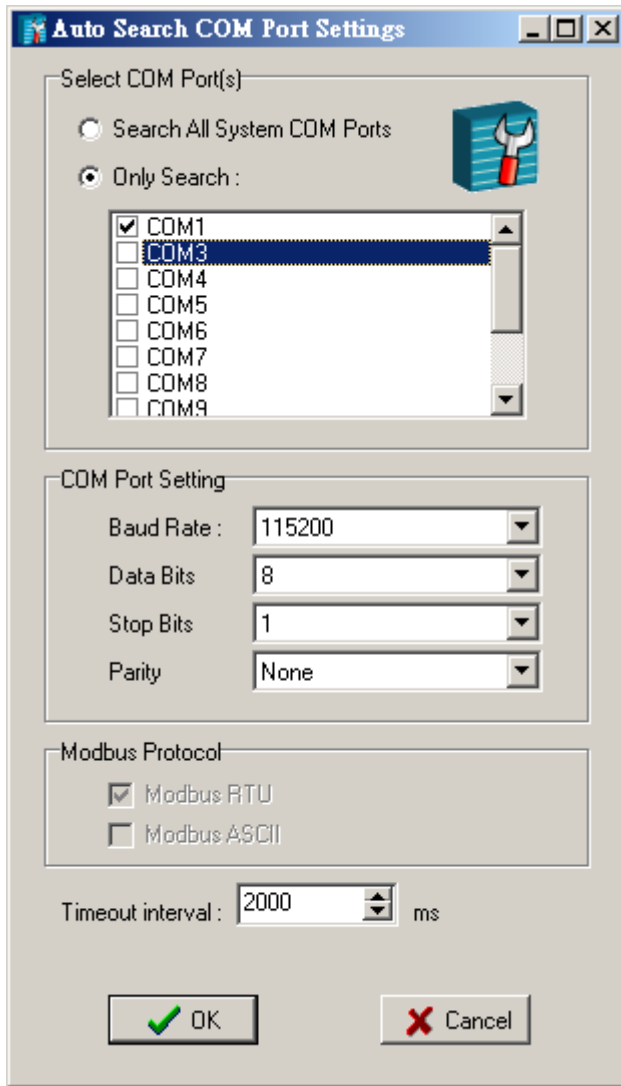
To start ioAdmin, click on **Start → Program Files → Moxa → IO Server → Utility → ioAdmin**.

There are two ways to link to the RS-485/232 I/O Server. One is through Auto Search. The other is by entering the Unit ID manually.

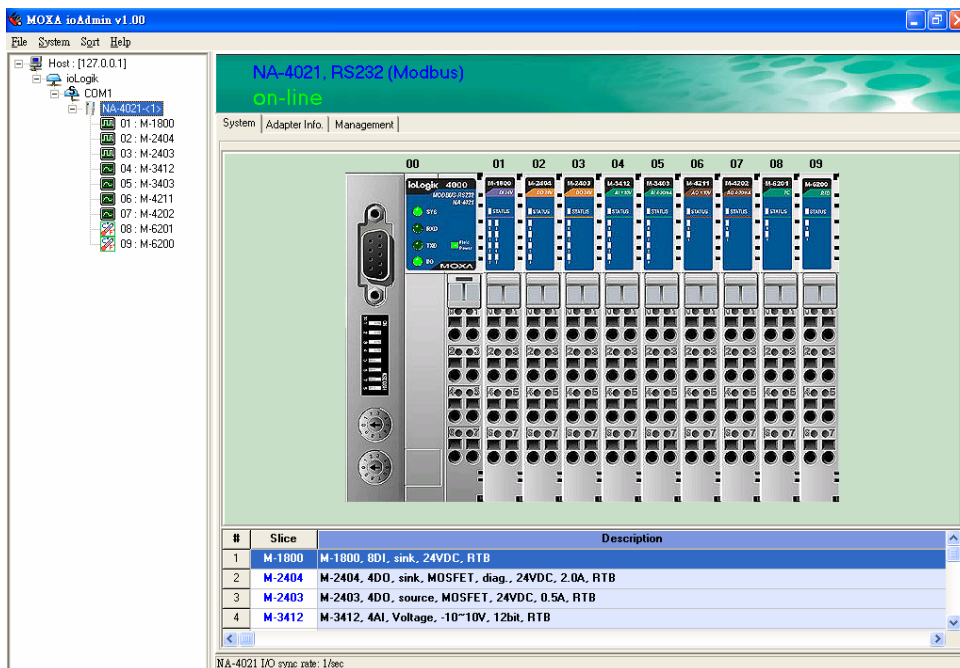
To start the Auto Search function, click on **Auto Scan Active Ethernet I/O Server** under System.



ioAdmin can automatically allocate available COM ports on the host computer and scan Unit IDs from 01 to 99 for each COM port. However, it takes longer to finish the process. A more efficient and faster method is to select **Only Search: COMx** and search designated COM ports. Note that ioAdmin supports Modbus/RTU. In a Modbus/ASCII environment, configure the Network Adapter using Modbus/RTU, and then switch back to Modbus/ASCII for field operation.



Once the RS-485/232 I/O Server is connected with ioAdmin, the following screen will appear.



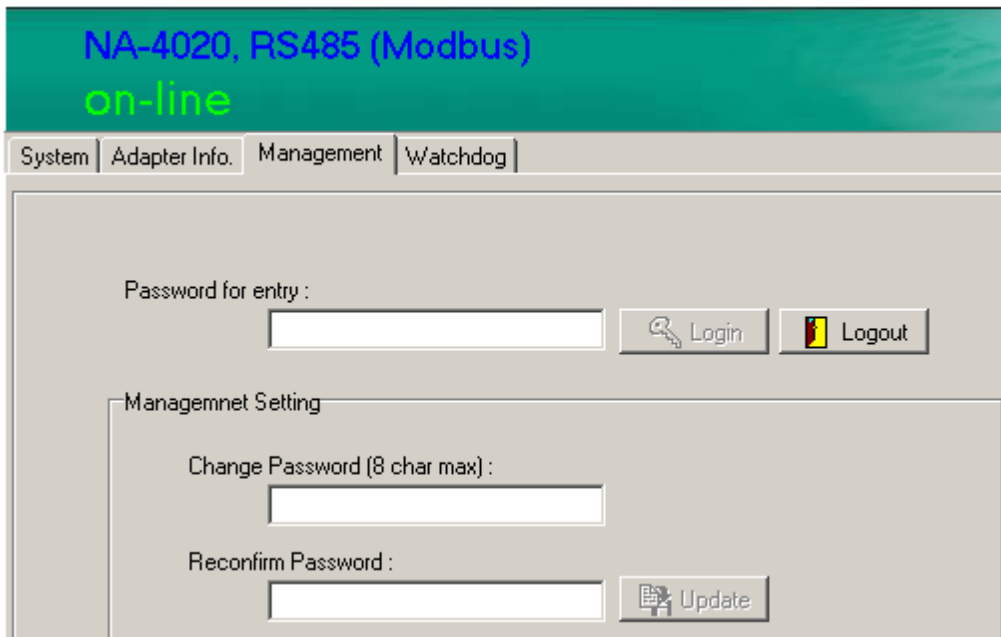
The left frame of ioAdmin shows all I/O Servers found on the network. The upper right frame indicates the combination of all I/O modules by slot number. The lower right frame lists detailed information for installed I/O modules.

Move the mouse cursor over any I/O module to display the model name and description automatically.

At this point, your I/O Server should be up and running. The next topic explains additional ioLogik 4000 management issues. You may also jump to Chapter 4 and check the status of each I/O channel.

Password Protection

Watchdog configuration, Reset to Default, and Restart System are password protected. By default, the password is blank. However, you will still need to click on Login to show the Watchdog tab.



Reset to Default

The Network Adapter settings, watchdog timer setting, I/O module safety status, and temperature sensor parameters are stored in the network adapter. Right click on the target I/O server, and then click on **Reset to Default** to proceed. You may need to wait 10 seconds or longer. ioAdmin will reconnect the I/O Server automatically.

Note that this function requires password authorization to activate.

Baud rate: 9600

Communication parameter: N,8,1

Modbus protocol: RTU

Modbus watchdog: disable

* The above parameters are set by the Network Adapter's DIP switch.

Watchdog timeout: 5 sec (50 x 100ms)

Password: (Empty)

* The above parameters are set by software.

Restarting the System

In general, you don't need to restart the I/O server when changing I/O module configurations. However, when the I/O Server indicates an I/O error, you may use this function to restart the I/O Server system remotely.

Right click on the target I/O server and then click on **Restart System** to proceed. You may need to wait 10 seconds or longer. ioAdmin will reconnect to the I/O Server automatically.

Note that this function requires password authorization to activate.

Deleting an I/O Server from the List

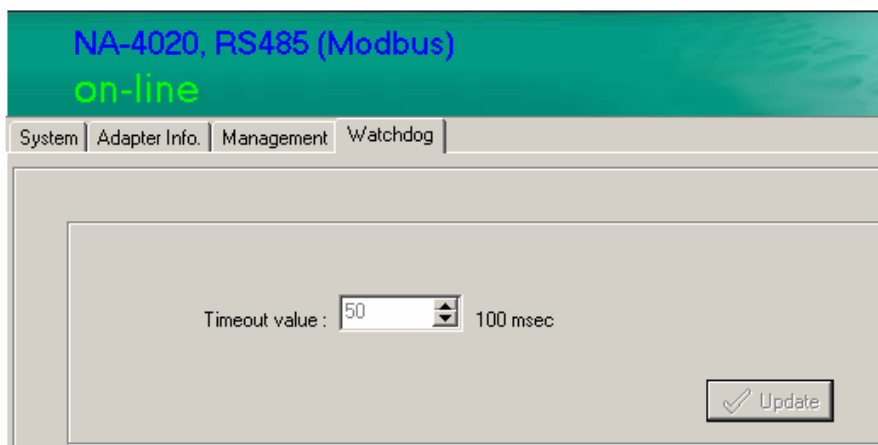
Sometimes too many I/O Servers appear in the left ioAdmin frame. To delete the I/O Server from the list for easier management, **right click** on the target I/O Server. Click on **Disconnect**, and then click on **Delete I/O Server**. The target I/O Server will be removed from the list.

Note that this function requires disconnected from the ioLogik to activate.

Watchdog Timer

The Watchdog timer monitors the Modbus/RTU or Modbus/ASCII connection between the Network Adapter and the host computer. The default is **off**.

When there is no query from the host computer over a preset time (in 100 msec increments), the Network Adapter will set all digital output and analog output values to a predefined Safe Status. Whether or not the Network Adapter is operational and ready for normal operation depends on the host computer. The maximal value of the Timeout Value is 65535, which means 6553.5 seconds.



Firmware Update

Firmware updates for NA-4020 and NA-4021 are not available to end users. If you need to update the firmware, please contact your local distributor for service.

I/O Status Refresh Rate

This parameter determines how often the ioAdmin utility polls all connected I/O Servers. The default value is 50 (500 msec). To change the configuration, click on **Data Refresh Rate** in the System menu, and then adjust the data refresh rate. Note that the units are in 10 msec increments, so if you enter 50, the refresh rate changes to 0.5 sec.

Modbus Address Mapping

Finding a Modbus Address for I/O Channels

The Modbus Address for each I/O channel is arranged dynamically by the Network Adapter according to the slot sequence and the type of I/O module. Changing Ethernet Network Adapter to RS-485 or RS-232 Network Adapters will not change the Modbus address mapping.

The Modbus Address mapping for I/O module can be found on “Modbus Address” tab.

M-2404, 4DO, sink, MOSFET, diag., 24VDC, 2.0A, RTB
on-line

I/O Status | Config | Modbus Address

Output Register Address

Channel #	WORD Address/bit offset	BIT Address	Size (Bit)
#0	0x0800/0x00	0x1000	0x0001
#1	0x0800/0x01	0x1001	0x0001
#2	0x0800/0x02	0x1002	0x0001
#3	0x0800/0x03	0x1003	0x0001

Slice Diagnosis

Address #	Value/Status	Access	Description
0x2037	1.005	Read	Firmware Revision

There are three columns for Modbus Address. According to the Modbus standard, there are two methods to access I/O channel. One is access by Register, and the other is by Coil. Each I/O channel can be accessed via the Register or Coil method.

For more information, refer to the Modbus protocol specifications.

Exporting Modbus Address Settings

Modbus Addresses for I/O channels are required when you want to access the I/O status via SCADA software. However, it's not easy to memorize all of the addresses for each I/O channel. For this reason, ioAdmin allows you to export a text file containing the installed I/O modules and their Modbus addresses. The following example is an exported system configuration file.

3. Modbus address table

Slot No.	Channel No.	I/O type	Modbus Addr. (WORD)	Modbus Addr. (BIT)	I/O Data Length
01	00	Input	0x0000/0x00	0x0000	0x0010
01	01	Input	0x0001/0x00	0x0010	0x0010
01	02	Input	0x0002/0x00	0x0020	0x0010
01	03	Input	0x0003/0x00	0x0030	0x0010
02	00	Input	0x0004/0x00	0x0040	0x0010
02	01	Input	0x0005/0x00	0x0050	0x0010
03	00	Input	0x0006/0x00	0x0060	0x0001
03	01	Input	0x0006/0x01	0x0061	0x0001
03	02	Input	0x0006/0x02	0x0062	0x0001
03	03	Input	0x0006/0x03	0x0063	0x0001
03	04	Input	0x0006/0x04	0x0064	0x0001

Configuring I/O Modules

In this chapter, we describe the common features related to using ioAdmin to configure I/O modules.

The following topics are covered in this chapter:

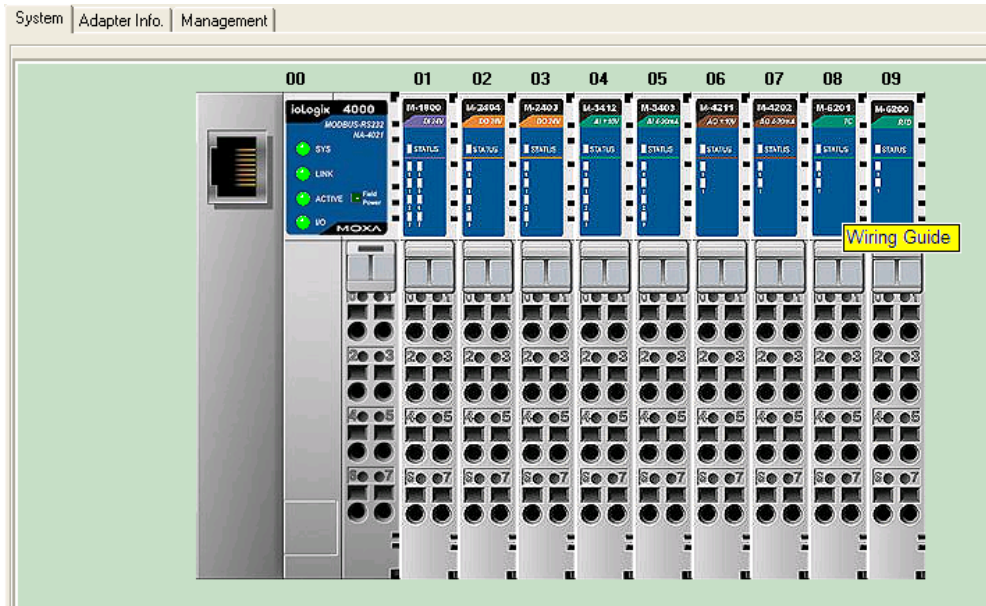
- ❑ **Overview**
- ❑ **On-Line Wiring Guide**
- ❑ **Digital Input Module**
- ❑ **Digital Output Module**
 - Safe Status
- ❑ **Analog Input Module**
- ❑ **Analog Output Module**
 - Safe Status
- ❑ **Temperature Sensing Modules**
 - RTD
 - Thermocouple

Overview

This Chapter describes common features of ioAdmin for configuring I/O modules.

On-Line Wiring Guide

ioAdmin has a graphical interface that features the “What You See Is What You Install” philosophy. ioLogik 4000 is easy-to-use, and ioAdmin comes with an on-line I/O wiring guide that makes your job easier than ever. Use the mouse to move the cursor over any of the I/O modules and then click on the right mouse button to display a “Wiring Guide”.



Click on the wiring guide to show a help file for that model.

M-6201 2 analog input, Thermocouple, removable terminal block

System wiring

Terminal block connections:
 0 1: CH0, CH1
 2 3: CH0, CH1
 4 5: G, G
 6 7: CG, CG

Input Specification

Sensor types : Type J/K/T/E/R/S/B/N/L/U/C/D
 mV input 10uV/bit, 1uV/bit, 2uV/bit

Data format : 16 bit integer (2 s compliment)

Resolution : 0.1C / 10m ohm

Accuracy : +/- 0.1%, FSR @ 25C
 +/- 0.3%, FSR @ 0C, 60C

Input impedance :
 Conversion time : 200m sec. / all channel
 Diagnostic : Range over (if range over, data=Dx8000)

General Specification

Power dissipation : Max. 70mA @ 5.0VDC
 Isolation : I/O to logic: 2kVrms optical isolation
 Wiring : I/O cable max. AWG14

Digital Input Module

ioAdmin can monitor the status of each digital input channel. We use M-1800 to illustrate. To check the DI channel status, click on the I/O module in main page to show the I/O status on the "I/O Status" tab.

Channel #	Value
#0	0
#1	0
#2	0
#3	0
#4	0
#5	0
#6	0
#7	0

To check the Modbus Address, click on the "Modbus Address" tab.

Channel #	WORD Address/bit offset	BIT Address	Size (Bit)
#0	0x0000/0x00	0x0000	0x0001
#1	0x0000/0x01	0x0001	0x0001
#2	0x0000/0x02	0x0002	0x0001
#3	0x0000/0x03	0x0003	0x0001
#4	0x0000/0x04	0x0004	0x0001
#5	0x0000/0x05	0x0005	0x0001
#6	0x0000/0x06	0x0006	0x0001
#7	0x0000/0x07	0x0007	0x0001

Address #	Value/Status	Access	Description
0x2017	1.005	Read	Firmware Revision

Related Models	Digital Input
M-1800	8 DI, sink, 24 VDC, RTB
M-1801	8 DI, source, 24 VDC, RTB
M-1600	16 DI, sink, 24 VDC, RTB
M-1601	16 DI, source, 24 VDC, 20-pin
M-1450	4 DI, 110 VAC, RTB
M-1451	4 DI, 220 VAC, RTB

Digital Output Module

ioAdmin can monitor the status of each digital output channel. We use M-2404 to illustrate. To check the DI channel status, click on the I/O module in the main page. You'll see the I/O status on the "I/O Status" tab.

Channel #	Safe Mode	Safe Status
#0	Safe Status	OFF
#1	Safe Status	OFF
#2	Safe Status	OFF
#3	Safe Status	OFF

To check the Modbus Address, click on the "Modbus Address" tab.

Channel #	WORD Address/bit offset	BIT Address	Size (Bit)
#0	0x0800/0x00	0x1000	0x0001
#1	0x0800/0x01	0x1001	0x0001
#2	0x0800/0x02	0x1002	0x0001
#3	0x0800/0x03	0x1003	0x0001

Address #	Value/Status	Access	Description
0x2037	1.005	Read	Firmware Revision

Safe Status

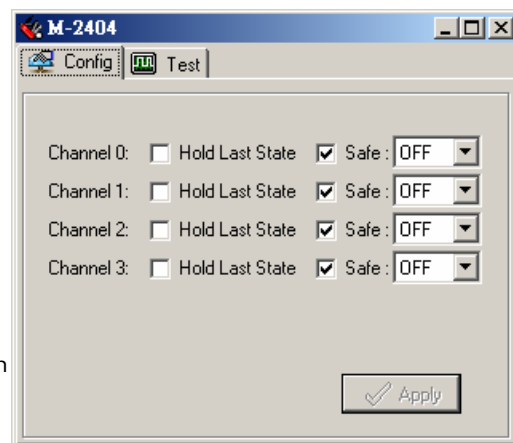
The digital output channel can be set to safe status when the following situations occur.

- Modbus watchdog is activated
- I/O error status

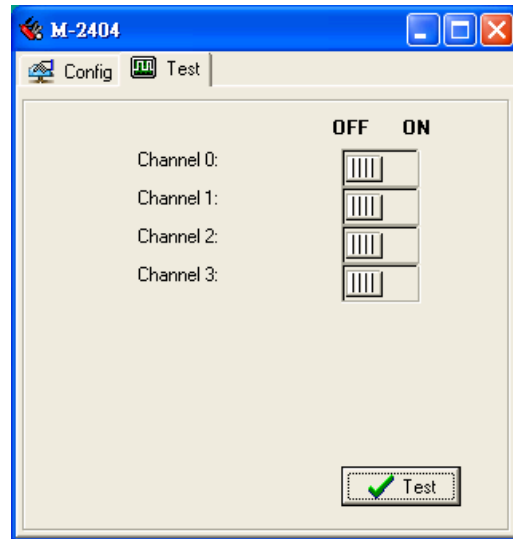
You may set the digital output status to following situations.

- Hold last state
- ON or OFF

Note that the configuration applies to all channels within the module.



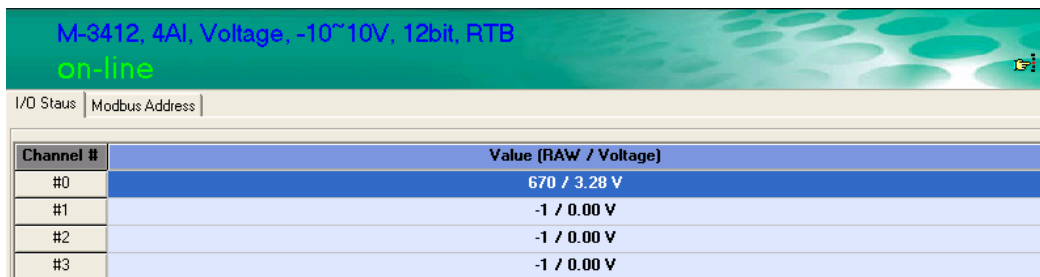
You can test to make sure the digital output channel works over the network. Click on the "Test" tab in the "Config" page. Press the switch, and then press "Test." At this point, you can change the status of the digital output point.



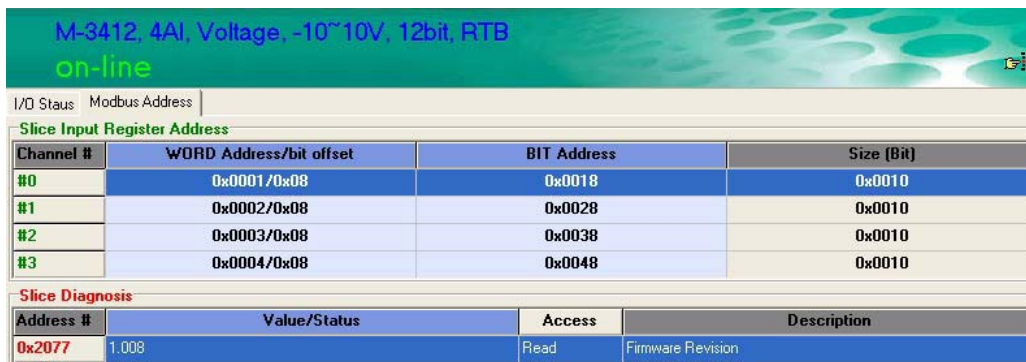
Related Models	Digital Input
M-2800	8 DO, sink, MOSFET, 24 VDC, 0.5A, RTB
M-2801	8 DO, source, MOSFET, 24 VDC, 0.5A, RTB
M-2600	16 DO, sink, MOSFET, 24 VDC, 0.3A, 20pin
M-2601	16 DO, source, MOSFET, 24 VDC, 0.3A, 20pin
M-2450	4 DO, Relay, 230 VAC, 24VDC, 2.0A, RTB

Analog Input Module

ioAdmin can monitor the status of each analog input channel. We'll use M-3412 to illustrate. To check the status of the DI channel, click on the I/O module in the main page. The I/O status is located on the "I/O Status" tab.



To check the Modbus Address, click on the "Modbus Address" tab.



Related Models	Digital Input
M-3802	8 AI, Current, 4-20 mA, 12-bit, RTB
M-3810	8 AI, Voltage, 0-10V, 12-bit, RTB

Analog Output Module

This section describes how to configure an analog output module. We'll use M-4211 to illustrate. To check the status of an analog output channel, click on the I/O module in the main page. You'll see the I/O status on the "I/O Status" tab.

M-4211, 2AO, Voltage, -10~10V, 12bit, RTB
on-line

I/O Status | Config | Modbus Address

Channel #	Value [RAW / Voltage]
#0	0 / 0.00 V
#1	0 / 0.00 V

To check the Modbus Address, click on "Modbus Address" tab.

M-4211, 2AO, Voltage, -10~10V, 12bit, RTB
on-line

I/O Status | Config | Modbus Address

Output Register Address

Channel #	WORD Address/bit offset	BIT Address	Size (Bit)
#0	0x0801/0x00	0x1010	0x0010
#1	0x0802/0x00	0x1020	0x0010

Slice Diagnosis

Address	Value/Status	Access	Description
0x20B7	1.008	Read	Firmware Revision

Safe Status

The analog output channel can be set to safe status when the following situations occur.

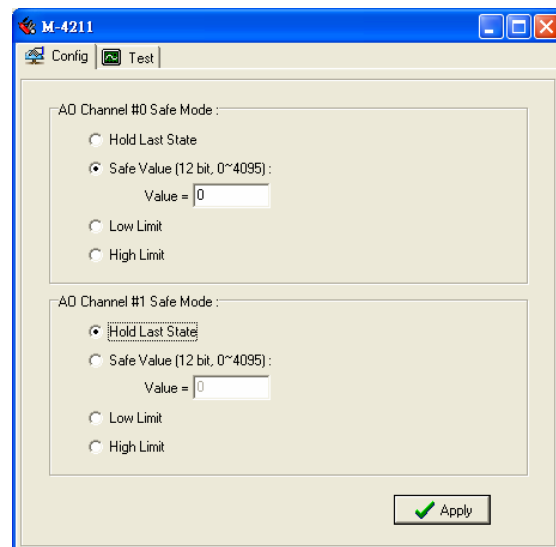
- Modbus watchdog is activated
- I/O error status

You may set the analog output status to the following situations.

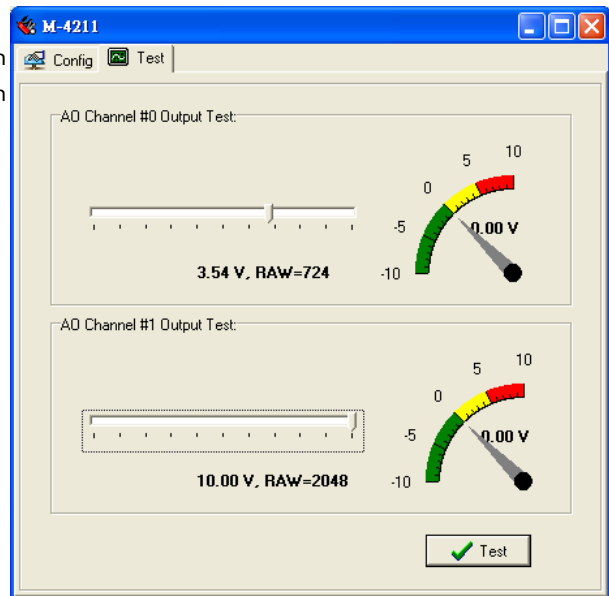
- Hold last state
- Safe value
- Low limit
- High limit

Low Limit represents the lowest value for the analog out module. For a 0 to 10V analog output module, the Low Limit is 0V.

High Limit represents the highest value for the analog output module. For a 0 to 10V analog output module, the High Limit is 10V.



You may test if the analog output channel really works over the network. Click on the “Test” tab on the “Config” page. Scroll the output level, and then press “Test.” At this point, you can change the level of the analog output point.



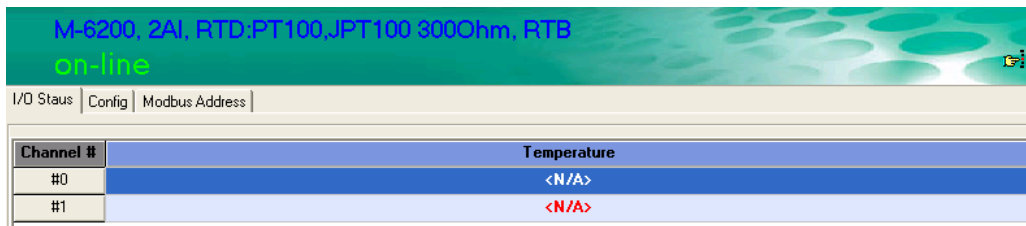
Related Models	Analog Output
M-4402	4 AO, 4-20 mA, 12-bit, RTB
M-4410	4 AO, Voltage, 0-10V, 12-bit, RTB

Temperature Sensing Modules

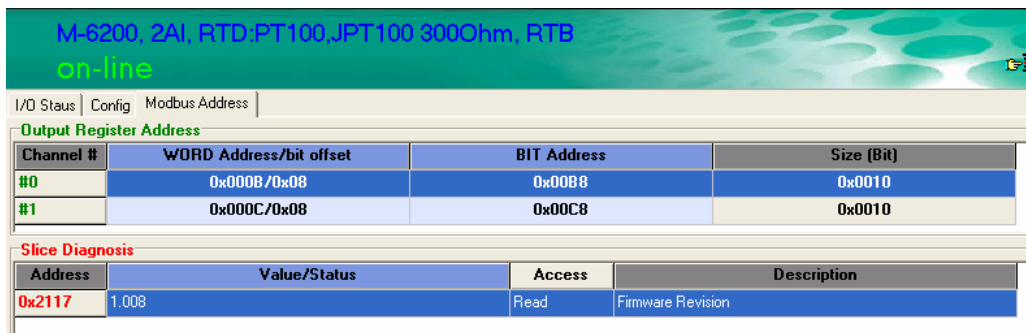
ioLogik 4000 provides RTD (Resistance Temperature Detector) and TC (Thermocouple) temperature sensing modules.

RTD

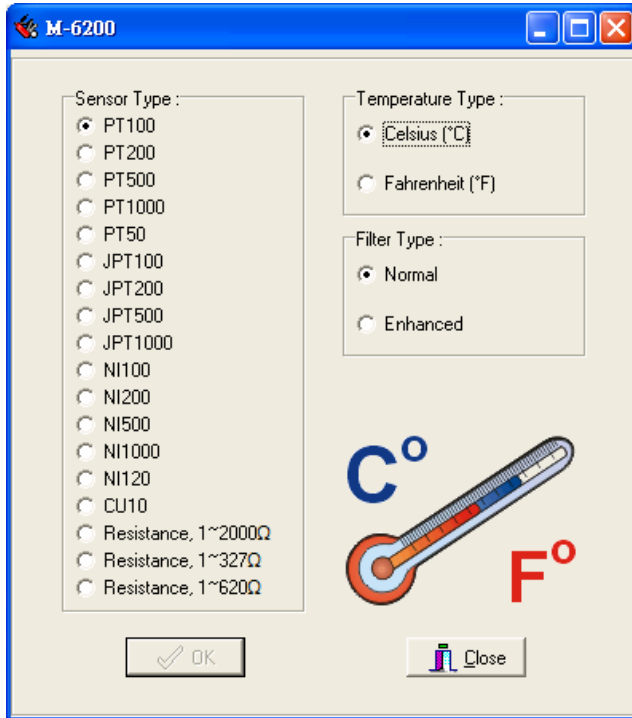
To check the temperature status, click on the I/O module from the main page. The temperature is on the “I/O Status” tab. When the sensor is not connected or the wiring is broken, the value is “0x8000”.



To check the Modbus Address, click on the “Modbus Address” tab.



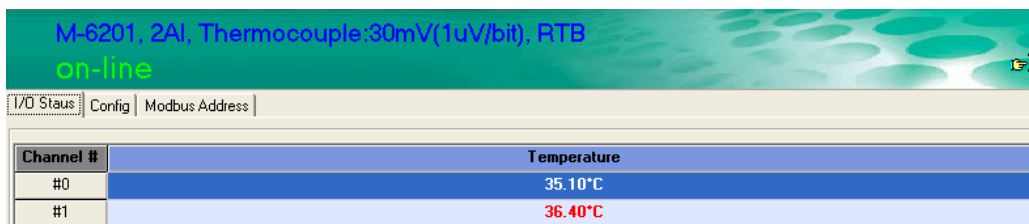
The RTD module supports different kinds of temperature sensor. To configure the sensor type, click on **config**.



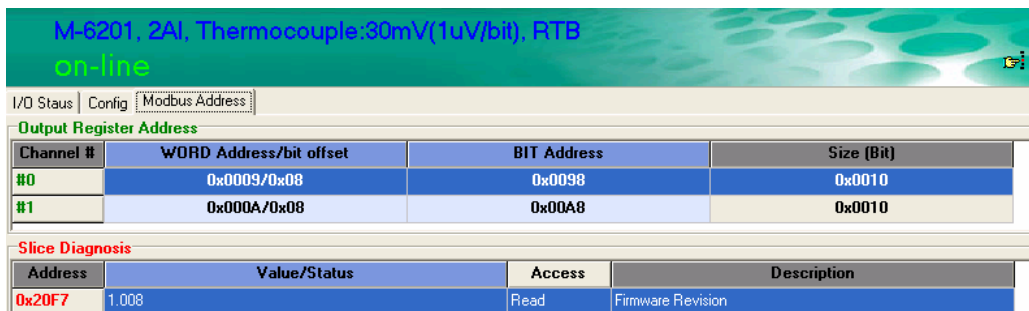
On this page, you may set up the sensor types and temperature unit. Note that the configuration applies to all channels in the same module. The related model is M-6200. The **FilterType** represents different sampling times. In Normal mode, the conversion time is about 200 msec. In Enhanced mode, the conversion time will be about double, or around 400 msec.

Thermocouple

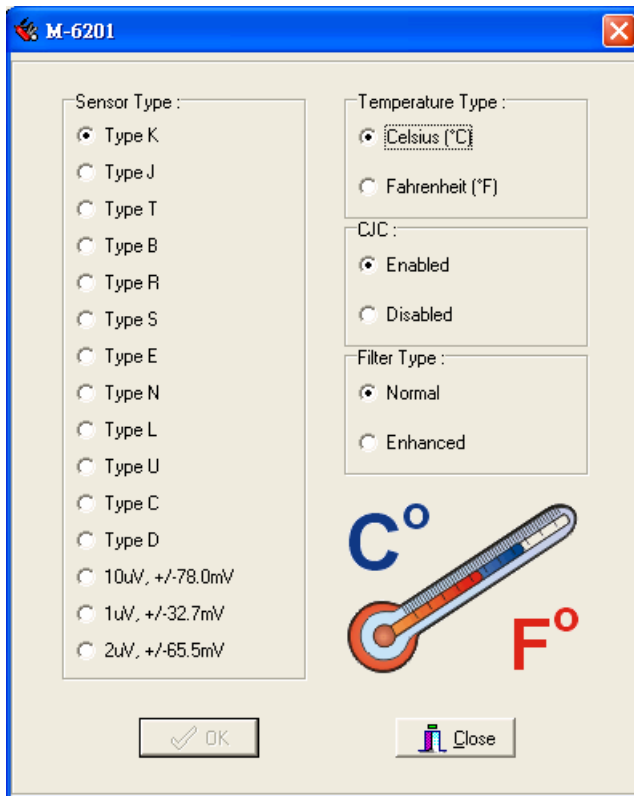
To check the temperature status, click on the I/O module from the main page. You'll see the temperature on the "I/O Status" tab.



To check the Modbus Address, click on the "Modbus Address" tab.



The thermocouple module supports different kinds of temperature sensor. To configure the sensor type, click on **config**.



On this page, you may set up the sensor types and the temperature unit. Note that the configuration applies to all channels in the same module. The related model is M-6201.

The **FilterType** represents the different sampling times. In Normal mode, the conversion time is about 200 msec. In Enhanced mode, the conversion time will be about double, or around 400 msec. The thermocouple temperature sensor is noise sensitive. Using Enhanced Mode can increase stability of the readings. CJC should always be enabled.

5

MXIO DLL Library

The following topics are covered in this chapter:

- **Overview**
- **MXIO Function Groups**

Overview

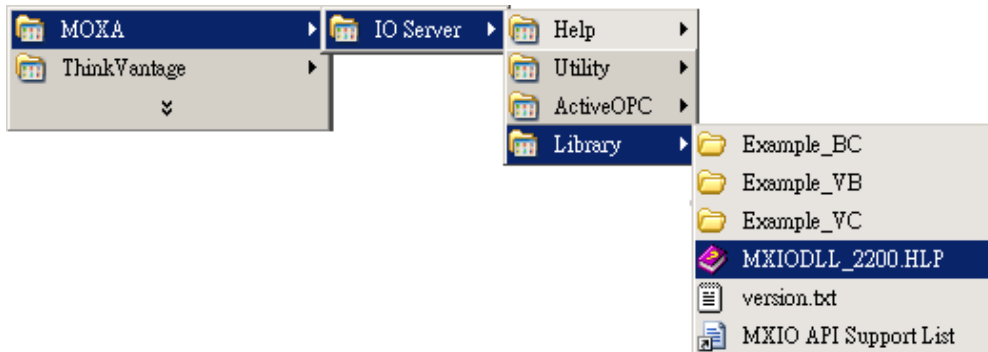
What is MXIO DLL Library?

MXIO DLL Library is a Windows library especially designed for programmers who are not familiar with Modbus protocol, but who need to create applications to get real world temperature, data, and on/off control signals.

MXIO DLL supports Visual Basic, Visual C++, and Borland C++ Builder.

How to install MXIO DLL Library

MXIO DLL Library comes with the ioAdmin software utility. It is installed in the directory **Start → Programs → Moxa → IO Server → Library**. Refer to MXIO DLL help for more details.



MXIO Function Groups

<p>1. System Commands</p> <p>RS-485/RS-232 I/O Connect Commands</p> <ul style="list-style-type: none"> MXSIO_OpenCommPort MXSIO_CloseCommport MXSIO_Connect MXSIO_Disconnect <p>Ethernet I/O Connect Commands</p> <ul style="list-style-type: none"> MXEIO_Init MXEIO_Exit MXEIO_Connect MXEIO_Disconnect MXEIO_CheckConnection <p>General Commands</p> <ul style="list-style-type: none"> MXIO_GetDIIVersion MXIO_GetModuleType <p>2. Modbus Command Sets</p> <ul style="list-style-type: none"> MXIO_ReadCoils MXIO_WriteCoils MXIO_ReadRegs MXIO_WriteRegs 	<p>3. Direct I/O Command Sets</p> <p>Digital Input Commands</p> <ul style="list-style-type: none"> DI_Reads DI_Read <p>Digital Output Commands</p> <ul style="list-style-type: none"> DO_Reads DO_Read DO_Writes DO_Write <p>Analog Input Commands</p> <ul style="list-style-type: none"> AI_Reads AI_Read <p>Analog Output Commands</p> <ul style="list-style-type: none"> AO_Reads AO_Read AO_Writes AO_Write <p>RTD Commands</p> <ul style="list-style-type: none"> RTD_Reads RTD_Read <p>Thermocouple Commands</p> <ul style="list-style-type: none"> TC_Reads TC_Read 	<p>Special Commands for ioLogik 4000</p> <ul style="list-style-type: none"> Adp4K_ReadFirmwreRevisi on Adp4K_ReadFirmwareDate Adp4K_ReadSlotAmount Adp4K_ReadStatus Adp4K_ReadAlarmedSlot
--	--	--

A

Pinouts and Cable Wiring

The following topics are covered in this appendix:

▣ **Port Pinout Diagrams**

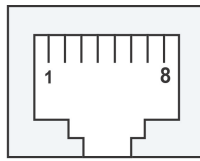
- Ethernet Port Pinouts
- Serial Port Pinouts

▣ **Ethernet Cable Wiring Diagrams**

Port Pinout Diagrams

Ethernet Port Pinouts

Pin	Signal
1	Tx+
2	Tx-
3	Rx+
6	Rx-



Serial Port Pinouts

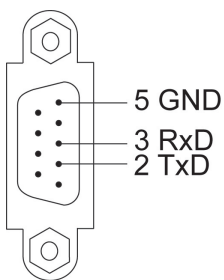
NA-4020 RS-485 Network Adapter Pin Assignment.

RS485 Connector

- RS485+ —
- RS485- —
- GND —
- Shield —
- FG —

Dsub 5-Pin (Female)	SignalName	Description
1	RS485+	In/Out, Transceiver Data High
2	RS485-	In/Out, Transceiver Data Low
3	GND	Signal Common
4	Shield	Shield
5	FG	Frame Ground, Internally shorted with Shield

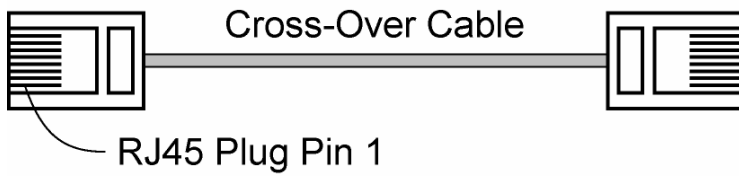
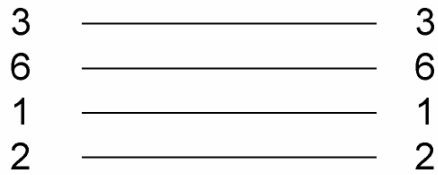
NA-4021 RS-232 Network Adapter Pin Assignment



Ethernet Cable Wiring Diagrams



Cable Wiring



Cable Wiring

