

Windows CE Remote Tools for Moxa's Embedded Computers

Third Edition, April 2008

www.moxa.com/product

MOXA®

© 2008 Moxa Inc., all rights reserved.
Reproduction without permission is prohibited.

Windows CE Remote Tools for Moxa's Embedded Computers

The software described in this manual is furnished under a license agreement and may be used only in accordance with the terms of that agreement.

Copyright Notice

Copyright © 2008 Moxa Inc.
All rights reserved.
Reproduction without permission is prohibited.

Trademarks

MOXA is a registered trademark of Moxa Inc.
All other trademarks or registered marks in this manual belong to their respective manufacturers.

Disclaimer

Information in this document is subject to change without notice and does not represent a commitment on the part of Moxa.

Moxa provides this document "as is," without warranty of any kind, either expressed or implied, including, but not limited to, its particular purpose. Moxa reserves the right to make improvements and/or changes to this manual, or to the products and/or the programs described in this manual, at any time.

Information provided in this manual is intended to be accurate and reliable. However, Moxa assumes no responsibility for its use, or for any infringements on the rights of third parties that may result from its use.

This product might include unintentional technical or typographical errors. Changes are made periodically to the information in this manual to correct such errors, and these changes are incorporated into new editions of the publication.

Technical Support Contact Information

www.moxa.com/support

Moxa Americas:

Toll-free: 1-888-669-2872
Tel: +1-714-528-6777
Fax: +1-714-528-6778

Moxa Europe:

Tel: +49-89-3 70 03 99-0
Fax: +49-89-3 70 03 99-99

Moxa Asia-Pacific:

Tel: +886-2-8919-1230
Fax: +886-2-8919-1231

Moxa China (Beijing office):

Tel: +86-10-6872-3959/60/61
Fax: +86-10-6872-3958

Table of Contents

Chapter 1	Microsoft Remote Tools	1-1
Chapter 2	Using Remote Tools with eMbedded Visual C++ 4.0	2-1
Chapter 3	Using Remote Tools with Visual Studio 2005	3-1

Microsoft Remote Tools

Microsoft provides many powerful utilities to allow remote operation of a Windows CE device from a Windows PC. These tools include *Remote File Viewer*, *Remote Registry Editor*, *Remote Process Viewer*, and *Remote Spy*.

Remote File Viewer is presented as an example. Please follow the steps below to initiate a remote file viewer that will show the files stored on your Moxa embedded computer. Other remote tools may be initiated in a similar manner.

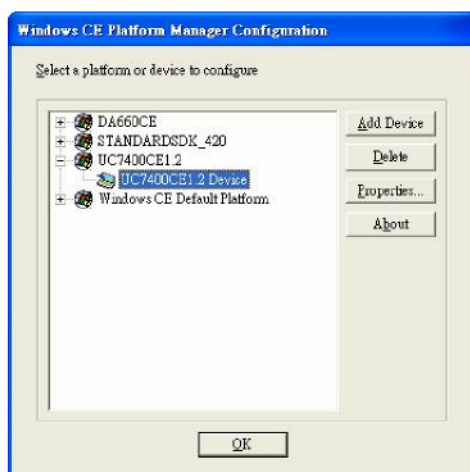
NOTE: One or more of Moxa's Windows CE embedded computers are used in this manual to illustrate how to install and use the software.

However, the information described in this manual applies to all of Moxa's Windows CE embedded computers.

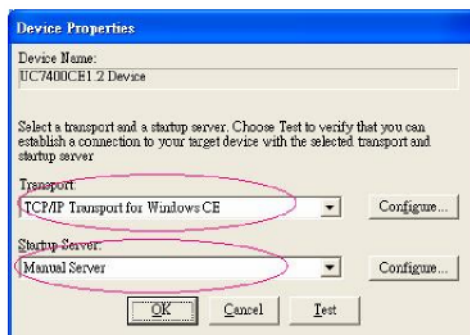
2

Using Remote Tools with eMbedded Visual C++ 4.0

1. Open eMbedded Visual C++ 4.0
2. Select Tools from the main menu bar and then click Configure Platform Manager.
3. Click the **Properties** button.

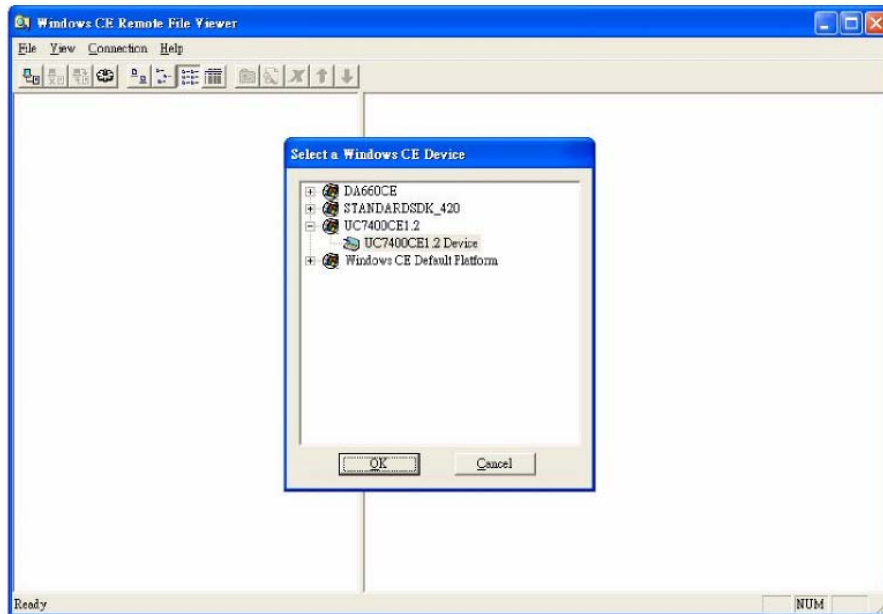


4. Select **TCP/IP Transport for Windows CE** from the **Transport** box, and then select **Manual Server** from the **Startup Server** box. Click **OK**.

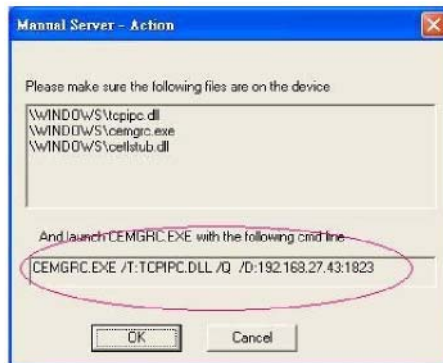


5. In eMbedded Visual C++ 4.0, select **Tools** from the main menu bar and then **Remote File Viewer (WCE500)**.

6. Select a device, (**UC7400CE1.2 Device**, for example), and then click **OK**.

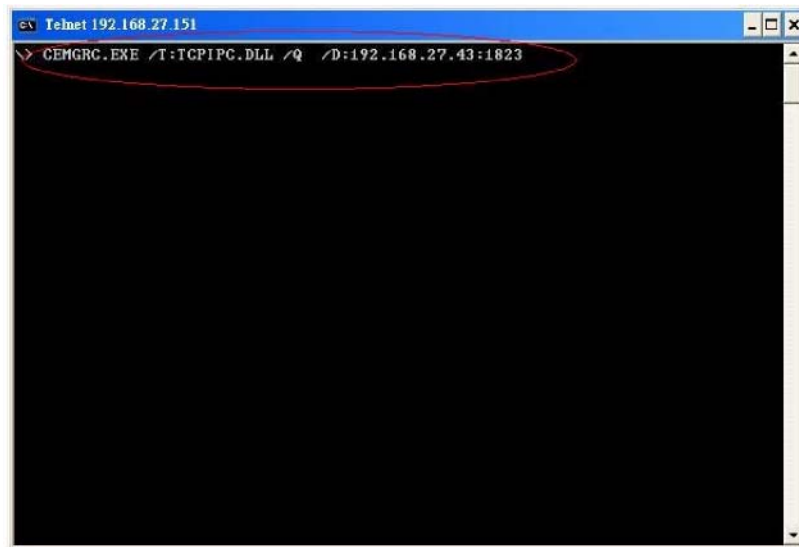


7. In the **Manual Server – Action** window that appears, copy the string inside the text box. Do not click **OK** or **Cancel** at this point.

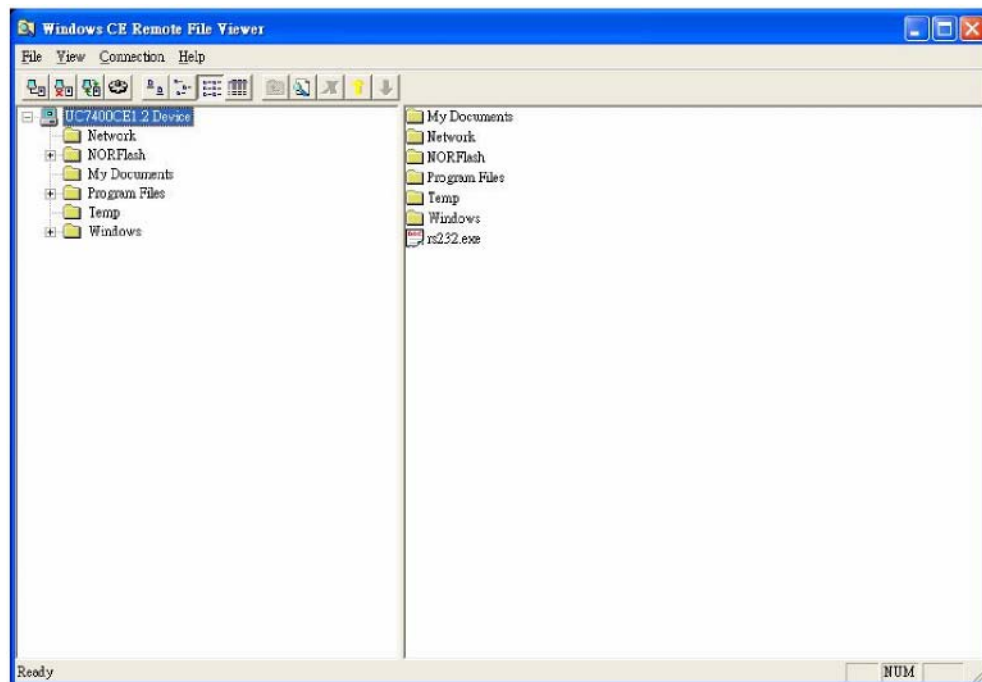


8. Use a Telnet client to log on to the embedded computer.

9. Paste the copied string to the Telnet window, and then press **Enter**.



10. In the **Manual Server – Action** window, click **OK** to start a connection.
11. The remote file viewer will appear.



Using Remote Tools with Visual Studio 2005

1. Before you use the remote tools, please make sure that no other ActiveSync device is connected to your workstation.
2. On your PC, go to **C:\Program Files\Common Files\Microsoft Shared\CoreCon\1.0\Target\wce400** and open the appropriate folder for your CPU architecture. Copy the following files from that folder to your embedded computer:

Clientshutdown.exe
CMAccept.exe
ConmanClient2.exe
DeviceDMA.dll
eDbgTL.dll
TcpConnectionA.dll

NOTE: For the UC-7400-CE, DA-660, and DA-66X-CE, please copy these files to the **\NORflash** directory on your embedded computer. If you place these files in any other directory, they will be deleted when the embedded computer is restarted.

3. Log onto the embedded computer and run *conmanclient2.exe* in the background by entering the following command:

```
\> start conmanclient2.exe
```

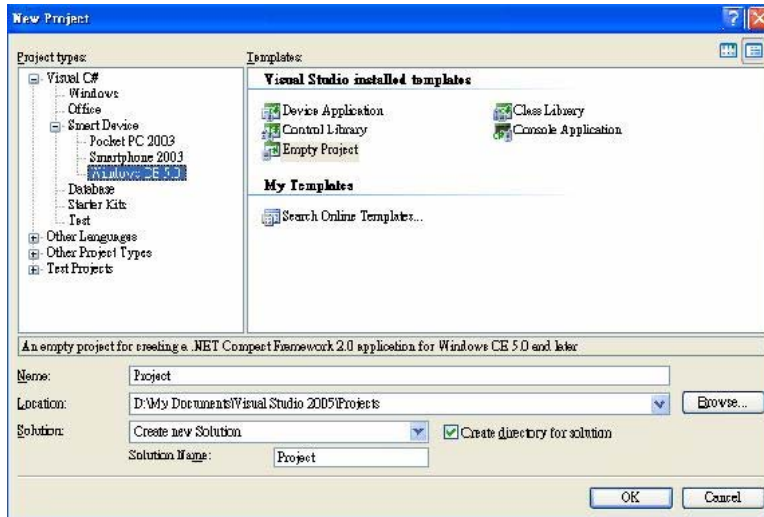
NOTE: You can configure the embedded computer to launch the process automatically at bootup. For details, please refer to the user's manual.

4. Run *CMAccept.exe* in the background by entering the following command:

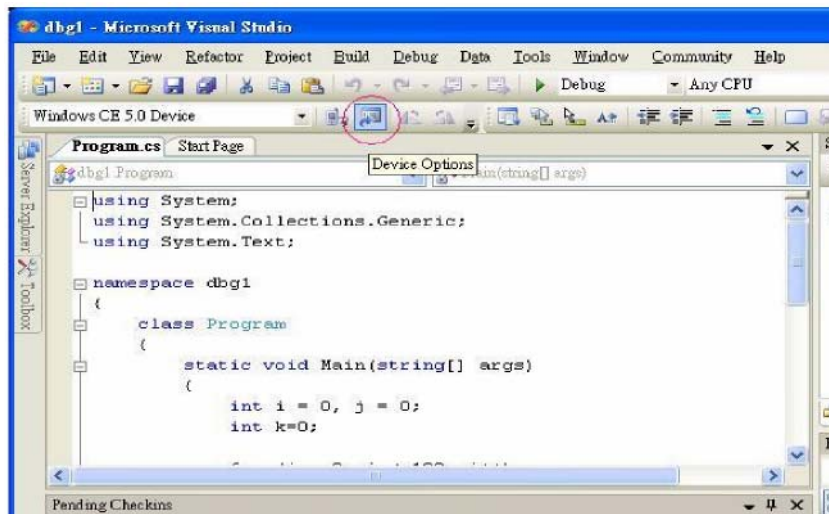
```
\> start CMAccept.exe
```

NOTE: This program accepts a connection from Visual Studio 2005 and immediately ends. For a new connection, run the program again.

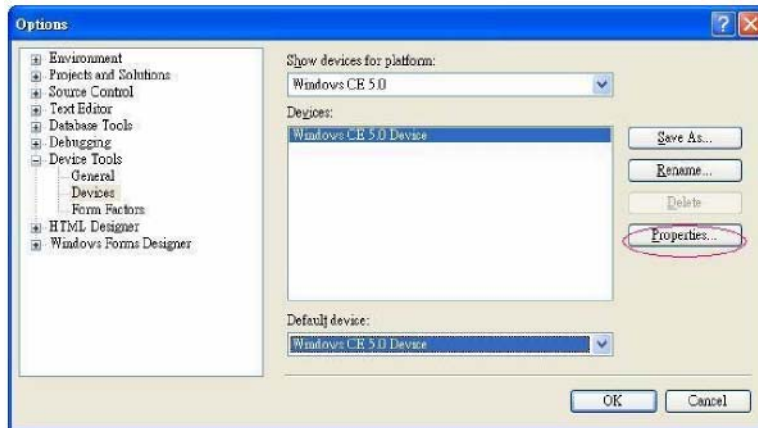
5. Open a Visual Studio 2005 Smart Device project. You may also start a new project as follows: **New Project** → **Select project type** → **Choose Smart Device** → **Select templates** → **Give a project name** → **Click OK**



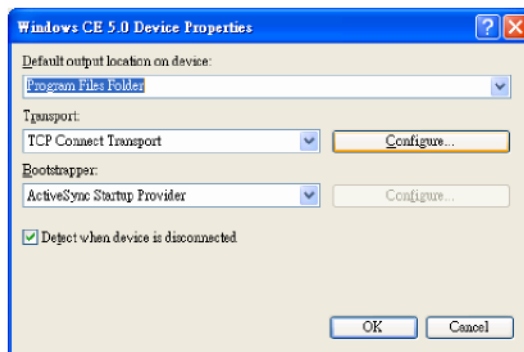
6. Click **Device Options**.



7. Choose **Properties....**



8. Choose **Configure....**

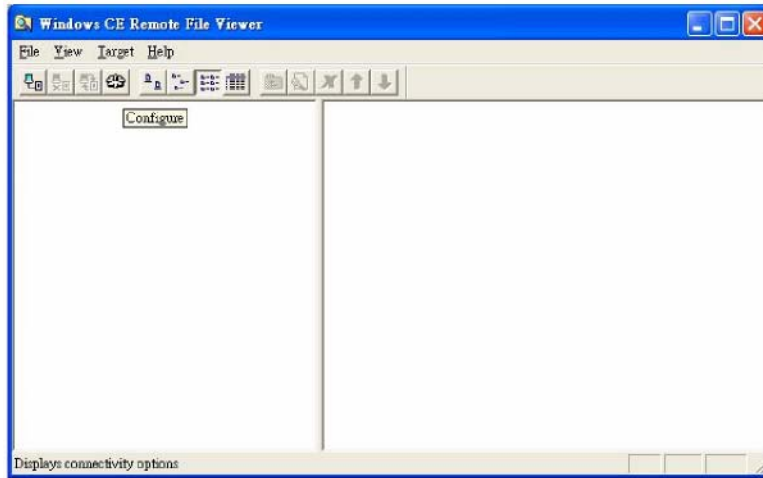


9. Check **Use specific IP Address** and enter the network address of the embedded computer. Click **OK** to continue.

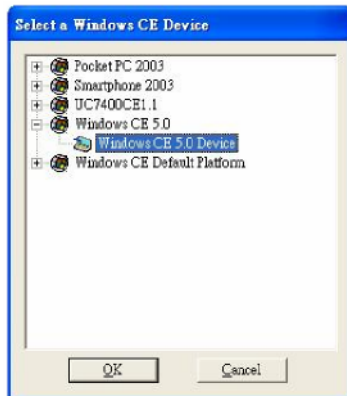


10. Select **Remote File View** from **Start** → **Programs** → **Visual Studio 2005** → **Remote Tools**.

- Click **Configure** and then follow the steps described in the previous section to make a connection to the embedded computer (be sure that *CMAccept.exe* is running).



- After the connection is made, select the device and click **OK**.



- The remote file viewer will appear.

