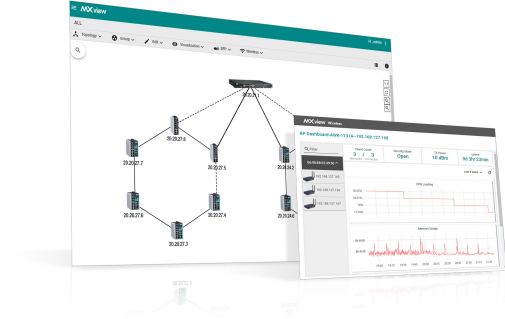


MXview 系列

專為聚合式自動化網路所設計的工業級網路管理軟體，支持可選的無線附加模組

特色與優點

- 自動偵測與可視化網路裝置和實體連線
- 為 Moxa 設備集中管理配置和韌體
- 提供各種事件和通知模式，用戶可自訂臨界值和持續時間
- 提供全面性報告，包括存貨、流量和適用性報告
- 提供 RESTful API 和網路小工具，可將 MXview 嵌入工業級應用程式
- 透過 SNMP MIB 檔案支援第三方以太網交換機
- 自動生成符合 OPC 2.0 的標籤，以便於整合 SCADA / HMI 應用
- 動態拓撲圖簡潔顯示無線網路狀態和連接變化¹
- 可視性、互動式漫遊回放功能，可檢視用戶端的漫遊歷史¹
- 個別 AP 與客戶端裝置之詳細裝置資訊與性能指示器圖表¹



簡介

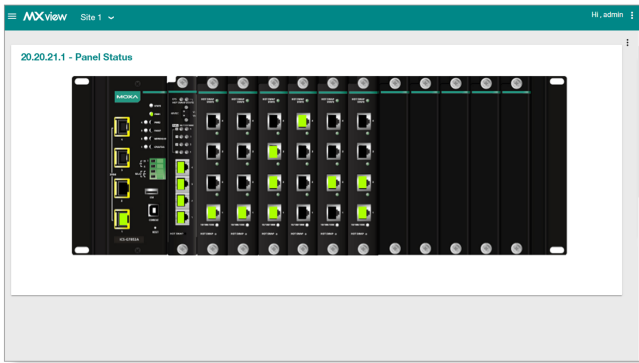
Moxa MXview 網路管理軟體專為配置、監視以及診斷工業網路之網路設計的裝置。MXview 提供整合管理平台，可發現安裝在子網路的網路裝置與 SNMP/IP 裝置。可隨時隨地透過本地或遠端站點之網頁瀏覽器，管理所有已選取的網路組件。

此外，MXview 支援選配的 MXview 無線附加模組¹，MXview Wireless 提供附加進階功能，供無線應用程式監控及排除網路故障，並最大程度協助縮短停機時間。

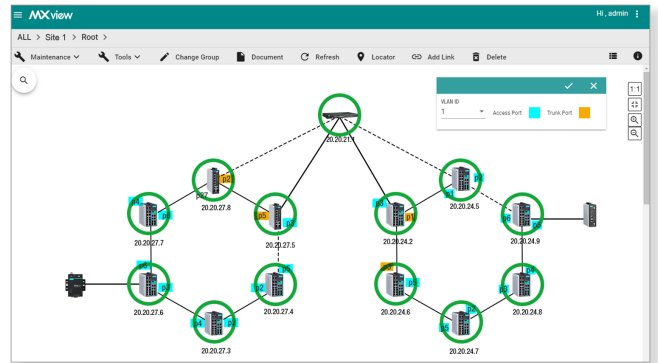
視覺化

- 發現掃描範圍內多達 2000 件 Moxa 裝置與 SNMP/ICMP 裝置
- 將冗餘網路狀態和網路冗餘協定的設備角色視覺化
- 圖形 VLAN 分組的視覺化
- 顯示符合工業資安標準之網路裝備的安全狀態之安全檢視
- 顯示第三方裝置圖示
- 網路管理儀表板可快速檢視網路狀態
- 使用色碼連結將網路流量負載視覺化
- 裝置前面板包含連結埠與 LED 指示器
- 受管理 PoE 裝置電能消耗的視覺化
- 無線裝置儀表板顯示 AP 與用戶端之間的動態關係、與無線裝置性能指標圖表¹
- 漫遊回放功能,可檢視客戶端漫遊歷史¹

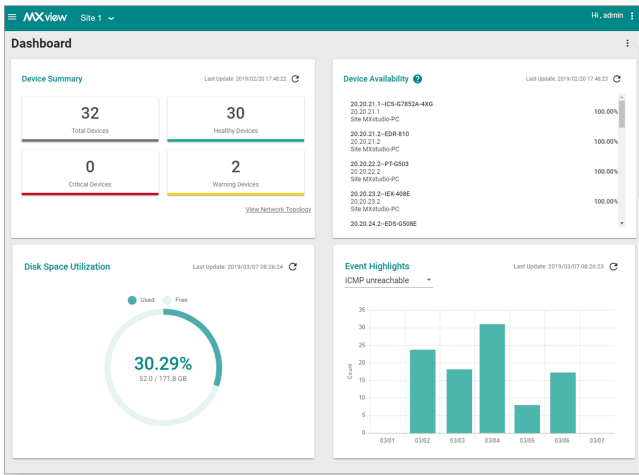
1. 此功能需要 MXview 無線附加授權 (LIC-MXview-ADD-WIRELESS-MR)，可個別購買。需要一個主動 MXview 授權用來啟用附加授權。



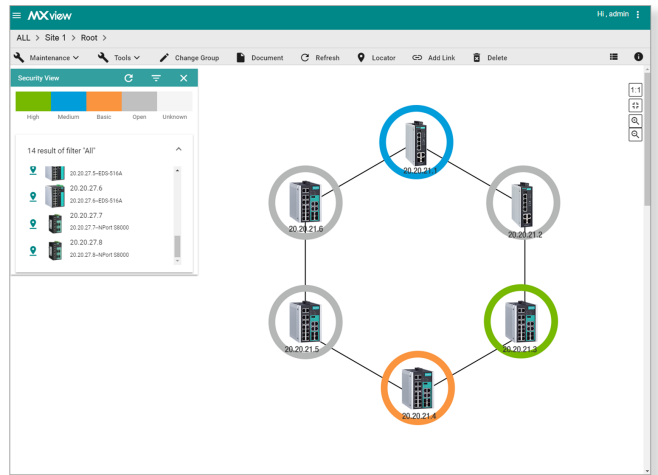
Virtual Device Panel



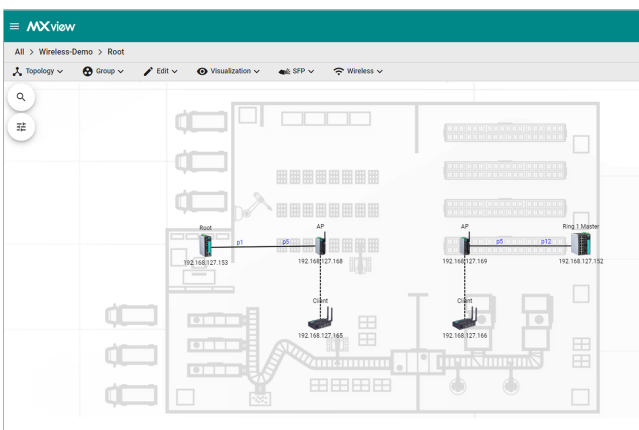
VLAN Visualization



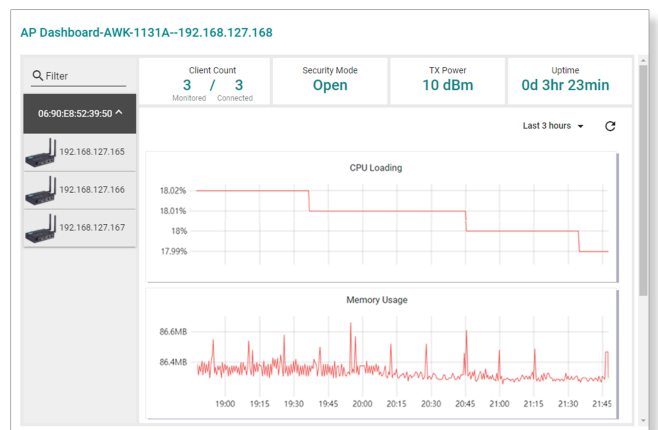
Main Dashboard



Security View



Dynamic Topology



Device Dashboard

網路診斷與事件通知

- 使用 SNMP 陷阱/通知或定期輪詢即時偵測問題
- 產生趨勢圖表追蹤頻寬使用率，和錯誤封包速率統計資料，精確到小數點後四位
- 支援 Syslog 伺服器進行集中訊息管理
- 透過電子郵件、Microsoft Teams、Slack、MXview ToGo 以及 SNMP 陷阱，或於本地端透過程式通知、訊息方塊或音效通知傳送配置事件通知警報
- 提供各種事件和通知模式，用戶可自訂臨界值和持續時間

- 自動產生符合 OPC 2.0 的標籤，以便於整合 SCADA/HMI 應用
- 群組健康 OPC 標籤可呈現整體網路狀況
- 即時裝置適用性監控
- 透過 MIB 檔案支援第三方以太網交換機
- 透過 SNMP 陷阱與第三方 NMS 合作
- 提供 RESTful API 和網路小工具，可將 MXview 嵌入工業級應用程式

全面性報告

- 維護裝置適用性報告與紀錄達 90 天
- 為網絡上每個裝置產出一個存貨報告

- 匯編全面性裝置屬性報告
- 產出網絡流量趨勢報告

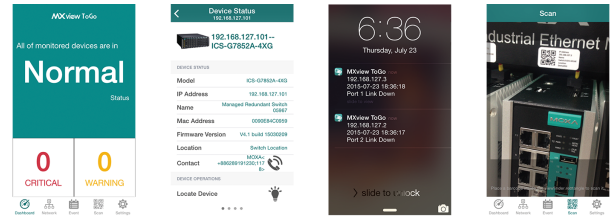
集中配置與韌體管理

- 從單一平台管理設備固件
- 一鍵備份多台設備和整個 MXview 數據庫的配置，包括拓撲、作業調度、事件、設備屬性
- 設定定期備份配置

- 儲存配置變更歷史
- 核對 2 項配置 之差異的比較工具

網路監控行動應用程式

- MXview ToGo 行動應用程式可隨時隨地監控與通知。
- 使用二維碼的智慧型裝置識別功能，可提升作業效率
- 使用行動應用程式之裝備定位器，可減短現場搜尋時間



規格

Hardware Requirements

CPU	2 GHz or faster dual-core CPU
RAM	8 GB or higher
Hardware Disk Space	MXview only: 10 GB With MXview Wireless module: 20 to 30 GB ²
OS	Windows 7 Service Pack 1 (64-bit) Windows 10 (64-bit) Windows Server 2012 R2 (64-bit) Windows Server 2016 (64-bit) Windows Server 2019 (64-bit)

Management

Supported Interfaces	SNMPv1/v2c/v3 and ICMP
----------------------	------------------------

Supported Devices

AWK Products	AWK-1121 Series (v1.4 or higher) AWK-1127 Series (v1.4 or higher) AWK-1131A Series (v1.11 or higher) AWK-1137C Series (v1.1 or higher) AWK-3121 Series (v1.6 or higher) AWK-3131 Series (v1.1 or higher) AWK-3131A Series (v1.3 or higher) AWK-3131A-M12-RTG Series (v1.8 or higher) AWK-4121 Series (v1.6 or higher) AWK-4131 Series (v1.1 or higher) AWK-4131A Series (v1.3 or higher)
DA Products	DA-820C Series (v1.0 or higher) DA-682C Series (v1.0 or higher)

2. 建議量為保存 1 個月之性能與事件歷史。

	DA-681C Series (v1.0 or higher) DA-720 Series (v1.0 or higher)
EDR Products	EDR-G903 Series (v2.1 or higher) EDR-G902 Series (v1.0 or higher) EDR-810 Series (v3.2 or higher) EDR-G9010 Series (v1.0 or higher)
EDS Products	EDS-405A/408A Series (v2.6 or higher) EDS-405A/408A-EIP Series (v3.0 or higher) EDS-405A/408A-PN Series (v3.1 or higher) EDS-405A-PTP Series (v3.3 or higher) EDS-505A/508A/516A Series (v2.6 or higher) EDS-510A Series (v2.6 or higher) EDS-518A Series (v2.6 or higher) EDS-510E/518E Series (v4.0 or higher) EDS-528E Series (v5.0 or higher) EDS-G508E/G512E/G516E Series (v4.0 or higher) EDS-G512E-8PoE Series (v4.0 or higher) EDS-608/611/616/619 Series (v1.1 or higher) EDS-728 Series (v2.6 or higher) EDS-828 Series (v2.6 or higher) EDS-G509 Series (v2.6 or higher) EDS-P510 Series (v2.6 or higher) EDS-P510A-8PoE Series (v3.1 or higher) EDS-P506A-4PoE Series (v2.6 or higher) EDS-P506 Series (v5.5 or higher)
EOM Products	EOM-104/104-FO Series (v1.2 or higher)
ICS Products	ICS-G7526/G7528 Series (v1.0 or higher) ICS-G7826/G7828 Series (v1.1 or higher) ICS-G7748/G7750/G7752 Series (v1.2 or higher) ICS-G7848/G7850/G7852 Series (v1.2 or higher) ICS-G7526A/G7528A Series (v4.0 or higher) ICS-G7826A/G7828A Series (v4.0 or higher) ICS-G7748A/G7750A/G7752A Series (v4.0 or higher) ICS-G7848A/G7850A/G7852A Series (v4.0 or higher)
IEX Products	IEX-402-SHDSL Series (v1.0 or higher) IEX-402-VDL2 Series (v1.0 or higher) IEX-408E-2VDL2 Series (v4.0 or higher)
IKS Products	IKS-6726/6728 Series (v2.6 or higher) IKS-6524/6526 Series (v2.6 or higher) IKS-G6524 Series (v1.0 or higher) IKS-G6824 Series (v1.1 or higher) IKS-6728-8PoE Series (v3.1 or higher) IKS-6726A/6728A Series (v4.0 or higher) IKS-G6524A Series (v4.0 or higher) IKS-G6824A Series (v4.0 or higher) IKS-6728A-8PoE Series (v4.0 or higher)
ioLogik Products	ioLogik E2210 Series (v3.7 or higher) ioLogik E2212 Series (v3.7 or higher) ioLogik E2214 Series (v3.7 or higher) ioLogik E2240 Series (v3.7 or higher) ioLogik E2242 Series (v3.7 or higher) ioLogik E2260 Series (v3.7 or higher) ioLogik E2262 Series (v3.7 or higher) ioLogik W5312 Series (v1.7 or higher) ioLogik W5340 Series (v1.8 or higher)
ioThinX Products	ioThinX 4510 Series (v1.3 or higher)
MC Products	MC-7400 Series (v1.0 or higher)
MDS Products	MDS-G4012 Series (v1.0 or higher) MDS-G4020 Series (v1.0 or higher) MDS-G4028 Series (v1.0 or higher) MDS-G4012-L3 Series (v2.0 or higher) MDS-G4020-L3 Series (v2.0 or higher)

	MDS-G4028-L3 Series (v2.0 or higher)
MGate Products	<p>MGate MB3170/MB3270 Series (v4.2 or higher)</p> <p>MGate MB3180 Series (v2.2 or higher)</p> <p>MGate MB3280 Series (v4.1 or higher)</p> <p>MGate MB3480 Series (v3.2 or higher)</p> <p>MGate MB3660 Series (v2.5 or higher)</p> <p>MGate 5101-PBM-MN Series (v2.2 or higher)</p> <p>MGate 5102-PBM-PN Series (v2.3 or higher)</p> <p>MGate 5103 Series (v2.2 or higher)</p> <p>MGate 5105-MB-EIP Series (v4.3 or higher)</p> <p>MGate 5109 Series (v2.3 or higher)</p> <p>MGate 5111 Series (v1.3 or higher)</p> <p>MGate 5114 Series (v1.3 or higher)</p> <p>MGate 5118 Series (v2.2 or higher)</p> <p>MGate W5108/W5208 Series (v2.4 or higher)</p> <p>MGate 52171 Series (v1.0 or higher)</p>
NPort Products	<p>NPort S8455 Series (v1.3 or higher)</p> <p>NPort S8458 Series (v1.3 or higher)</p> <p>NPort 5110 Series (v2.10 or higher)</p> <p>NPort 5130/5150 Series (v3.9 or higher)</p> <p>NPort 5200 Series (v2.12 or higher)</p> <p>NPort 5100A Series (v1.6 or higher)</p> <p>NPort P5150A Series (v1.6 or higher)</p> <p>NPort 5200A Series (v1.6 or higher)</p> <p>NPort 5400 Series (v3.14 or higher)</p> <p>NPort 5600 Series (v3.10 or higher)</p> <p>NPort 5610-8-DT/5610-8-DT-J/5650-8-DT/5650I-8-DT/5650-8-DT-J Series (v2.7 or higher)</p> <p>NPort 5610-8-DTL/5650-8-DTL/5650I-8-DTL Series (v1.6 or higher)</p> <p>NPort IA5000 Series (v1.7 or higher)</p> <p>NPort IA5150A/IA5150AI/IA5250A/IA5250AI Series (v1.5 or higher)</p> <p>NPort IA5450A/IA5450AI Series (v2.0 or higher)</p> <p>NPort 6000 Series (v1.21 or higher)</p> <p>NPort 5000AI-M12 Series (v1.5 or higher)</p>
PT Products	<p>PT-7528 Series (v3.0 or higher)</p> <p>PT-7710 Series (v1.2 or higher)</p> <p>PT-7728 Series (v2.6 or higher)</p> <p>PT-7828 Series (v2.6 or higher)</p> <p>PT-G7509 Series (v1.1 or higher)</p> <p>PT-508/510 Series (v3.0 or higher)</p> <p>PT-G503-PHR-PTP Series (v4.0 or higher)</p> <p>PT-G7728 Series (v5.3 or higher)</p> <p>PT-G7828 Series (v5.3 or higher)</p>
SDS Products	<p>SDS-3008 Series (v2.1 or higher)</p> <p>SDS-3016 Series (v2.1 or higher)</p>
TAP Products	<p>TAP-213 Series (v1.2 or higher)</p> <p>TAP-323 Series (v1.8 or higher)</p> <p>TAP-6226 Series (v1.8 or higher)</p>
TN Products	<p>TN-4516A Series (v3.6 or higher)</p> <p>TN-4516A-POE Series (v3.6 or higher)</p> <p>TN-4524A-POE Series (v3.6 or higher)</p> <p>TN-4528A-POE Series (v3.8 or higher)</p> <p>TN-G4516-POE Series (v5.0 or higher)</p> <p>TN-G6512-POE Series (v5.2 or higher)</p> <p>TN-5508/5510 Series (v1.1 or higher)</p> <p>TN-5516/5518 Series (v1.2 or higher)</p> <p>TN-5508-4PoE Series (v2.6 or higher)</p> <p>TN-5516-8PoE Series (v2.6 or higher)</p>
UC Products	<p>UC-2101-LX Series (v1.7 or higher)</p> <p>UC-2102-LX Series (v1.7 or higher)</p> <p>UC-2104-LX Series (v1.7 or higher)</p> <p>UC-2111-LX Series (v1.7 or higher)</p> <p>UC-2112-LX Series (v1.7 or higher)</p> <p>UC-2112-T-LX Series (v1.7 or higher)</p> <p>UC-2114-T-LX Series (v1.7 or higher)</p> <p>UC-2116-T-LX Series (v1.7 or higher)</p>

V Products	V2406C Series (v1.0 or higher)
VPort Products	VPort 26A-1MP Series (v1.2 or higher) VPort 36-1MP Series (v1.1 or higher) VPort P06-1MP-M12 Series (v2.2 or higher)
WAC Products	WAC-1001 Series (v2.1 or higher) WAC-2004 Series (v1.6 or higher)
For MXview Wireless	AWK-1131A Series (v1.22 or higher) AWK-1137C Series (v1.6 or higher) AWK-3131A Series (v1.16 or higher) AWK-4131A Series (v1.16 or higher) Note: To use advanced wireless functions in MXview Wireless, the device must be in one of the following operation modes: AP, Client, Client-Router.

Package Contents

Number of Supported Nodes	Up to 2000 (may require purchase of expansion licenses)
---------------------------	---

訂購資訊

Model Name	No. of Supported Nodes	License Expansion	Add-on Service
MXview-50	50	-	-
MXview-100	100	-	-
MXview-250	250	-	-
MXview-500	500	-	-
MXview-1000	1000	-	-
MXview-2000	2000	-	-
MXview Upgrade-50	0	50 nodes	-
LIC-MXview-ADD-WIRELESS-MR	-	-	Wireless

© Moxa Inc. 版權所有.2022 年 1 月 5 日更新。

未經 Moxa Inc. 明確書面許可，不得以任何方式複製或使用本文件及其任何部分。產品規格如有變更，恕不另行通知。請至本公司官網了解最新的產品資訊。