

# NPort 5400 系列

## 4 埠 RS-232/422/485 串列設備伺服器



### 特色與優點

- 易於安裝及使用的 LCD 面板
- 可調整的終端器和上拉/下拉電阻
- 通訊端模式：TCP server、TCP client、UDP
- 透過 Telnet、網頁瀏覽器或 Windows 工具程式進行設定
- 用於網路管理的 SNMP MIB-II
- NPort 5430I/5450I/5450I-T 的 2 kV 隔離保護
- -40 至 75°C 操作溫度範圍 (-T 型號)

### 認證



### 簡介

NPort® 5400 設備伺服器為串列轉乙太網路應用提供許多實用的功能，包括每個串列埠的獨立運作模式、易於安裝及使用的 LCD 面板、雙直流電源輸入，以及可調整的終端器和上拉/下拉電阻。

#### 最多可讓四個串列裝置連上網路

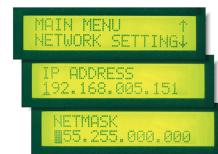
NPort® 5400 設備伺服器可以藉由方便且透通的方式將多達 4 台串列設備連接到乙太網路，僅需透過基本配置將現有的串列設備連上乙太網路。串列和乙太網路之間是雙向數據傳輸。使用 NPort® 設備伺服器，不僅可以保護您目前的硬體資產，且有助於未來的網路擴充。您可以集中管理串列設備，也可以透過網路分配管理主機。

#### 每個串列埠的獨立操作模式

NPort® 5400 設備伺服器可用於連接不同的設備，且可透過 TCP/IP 網路進行遠端數據查詢或事件處理。NPort® 5400 上的每個串列埠都獨立運作，以提供最高的多樣性。例如，連接埠 1 可以在 Driver 模式中運作，連接埠 2 可以在 TCP Server 模式中運作，連接埠 3 和 4 可以在 TCP Client 模式中運作。

#### 易於安裝及使用的 LCD 面板

NPort®5400 的頂部面板配置一 LCD 面板，具有四個按鈕可用於數據輸入、配置和操作模式選擇。LCD 面板可顯示伺服器名稱、產品序號和 IP 位址，且可輸入或修改 IP 位址、網路遮罩、閘道器等參數。  
(寬溫度型號無 LCD 面板)



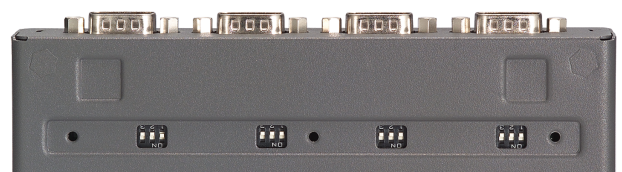
#### 雙直流電源輸入

NPort® 5400 設備伺服器透過提供直連接線端子模組輸入和直流電源插孔輸入來支援雙電源。兩種類型的電源輸入能因應不同的應用為使用者提供更大的彈性



#### 可調整的終端器和上拉/下拉電阻

NPort® 5400 系列為 RS-485 應用提供可調整的終端器和上拉/下拉電阻。在某些嚴苛環境中，可能需要終端電阻來防止串列訊號的反射，並且可能需要調整上拉/下拉電阻以保持電氣訊號的完整性。因為沒有電阻值可以相容於所有的環境，因此 NPort® 5400 的底部面板有 4 組 DIP 開關，可用於設定終端器和上拉/下拉電阻值。



## 規格

### Ethernet Interface

10/100BaseT(X) Ports (RJ45 connector)	1
Magnetic Isolation Protection	1.5 kV (built-in)

### Ethernet Software Features

Configuration Options	Telnet Console, Windows Utility, Web Console (HTTP/HTTPS)
Management	ARP, BOOTP, DHCP Client, DNS, HTTP, HTTPS, ICMP, IPv4, LLDP, Rtelnet, SMTP, SNMPv1/v2c, TCP/IP, Telnet, UDP
Filter	IGMP v1/v2
Windows Real COM Drivers	Windows 95/98/ME/NT/2000, Windows XP/2003/Vista/2008/7/8/8.1/10 (x86/x64), Windows 2008 R2/2012/2012 R2/2016/2019 (x64), Windows Embedded CE 5.0/6.0, Windows XP Embedded
Linux Real TTY Drivers	Kernel versions: 2.4.x, 2.6.x, 3.x, 4.x, and 5.x
Fixed TTY Drivers	macOS 10.12, macOS 10.13, macOS 10.14, macOS 10.15, SCO UNIX, SCO OpenServer, UnixWare 7, QNX 4.25, QNX 6, Solaris 10, FreeBSD, AIX 5.x, HP-UX 11i, Mac OS X
Android API	Android 3.1.x and later
Time Management	SNTP

### Serial Interface

Connector	NPort 5410/5450/5450-T/5450I/5450I-T: DB9 male NPort 5430/5430I: Terminal block
No. of Ports	4
Serial Standards	NPort 5410: RS-232 NPort 5430 Models: RS-422, RS-485 NPort 5450 Models: RS-232, RS-422, RS-485
Operation Modes	Real COM, TCP Server, TCP Client, UDP, Ethernet Modem, Pair Connection, Reverse Telnet, Disabled
Baudrate	Supports standard baudrates (unit=bps): 50, 75, 110, 134, 150, 300, 600, 1200, 1800, 2400, 4800, 7200, 9600, 19200, 38400, 57600, 115200, 230.4k, 460.8k, 921.6k
Data Bits	5, 6, 7, 8
Stop Bits	1, 1.5, 2
Parity	None, Even, Odd, Space, Mark
Flow Control	RTS/CTS (RS-232 only), DTR/DSR (RS-232 only), XON/XOFF
Isolation	2 kV isolation for NPort 5430I/5450I/5450I-T
Pull High/Low Resistor for RS-485	1 kilo-ohm, 150 kilo-ohms
RS-485 Data Direction Control	ADDC® (automatic data direction control)
Terminator for RS-485	120 ohms

### Serial Signals

RS-232	TxD, RxD, RTS, CTS, DTR, DSR, DCD, GND
RS-422	Tx+, Tx-, Rx+, Rx-, GND

RS-485-4w	Tx+, Tx-, Rx+, Rx-, GND
RS-485-2w	Data+, Data-, GND
<b>Power Parameters</b>	
Input Current	NPort 5410/5450/5450-T: 350 mA @ 12 VDC NPort 5430: 320 mA @ 12 VDC NPort 5430I: 530 mA @ 12 VDC NPort 5450I/5450I-T: 554 mA @ 12 VDC
Input Voltage	12 to 48 VDC
No. of Power Inputs	2
Power Connector	1 removable 3-contact terminal block(s) Power input jack
<b>Reliability</b>	
Automatic Reboot Trigger	Built-in WDT
Alert Tools	Built-in buzzer and RTC (real-time clock)
<b>Physical Characteristics</b>	
Housing	Metal
Dimensions (with ears)	181 x 103 x 33 mm (7.14 x 4.06 x 1.30 in)
Dimensions (without ears)	158 x 103 x 33 mm (6.22 x 4.06 x 1.30 in)
Weight	740 g (1.63 lb)
Interactive Interface	LCD panel display (standard temp. models only) Push buttons for configuration (standard temp. models only)
Installation	Desktop, DIN-rail mounting (with optional kit), Wall mounting
<b>Environmental Limits</b>	
Operating Temperature	Standard Models: 0 to 55°C (32 to 131°F) Wide Temp. Models: -40 to 75°C (-40 to 167°F)
Storage Temperature (package included)	-40 to 75°C (-40 to 167°F)
Ambient Relative Humidity	5 to 95% (non-condensing)
<b>Standards and Certifications</b>	
EMC	EN 55032/24
EMI	CISPR 32, FCC Part 15B Class A
EMS	IEC 61000-4-2 ESD: Contact: 4 kV; Air: 8 kV IEC 61000-4-3 RS: 80 MHz to 1 GHz: 3 V/m IEC 61000-4-4 EFT: Power: 1 kV; Signal: 0.5 kV IEC 61000-4-5 Surge: Power: 1 kV; Signal: 1 kV IEC 61000-4-6 CS: 150 kHz to 80 MHz: 3 V/m; Signal: 3 V/m IEC 61000-4-8 PFMF IEC 61000-4-11
Safety	UL 60950-1
Maritime	DNV (standard temp. models only)
Medical	NPort 5410/5450/5450I: EN 55011: 2007+A2: 2007 Class A (Group 1) compliant EN 60601-1-2: 2007 compliant

## MTBF

Time	NPort 5410: 310,331 hrs NPort 5430/5430I: 265,650 hrs NPort 5450/5450I/5450-T/5450I-T: 206,903 hrs
Standards	Telcordia (Bellcore) Standard TR/SR

## Warranty

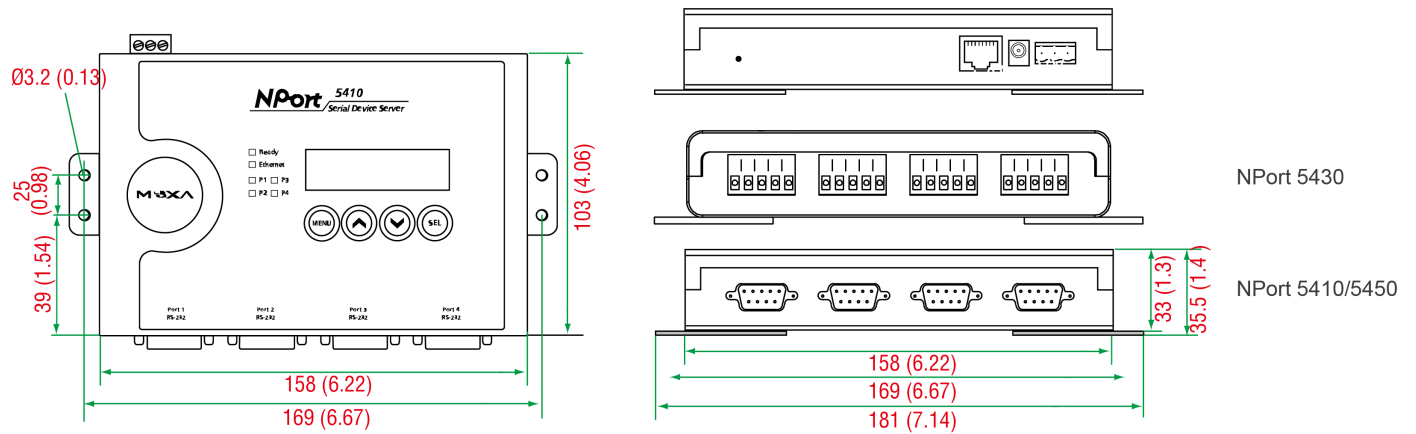
Warranty Period	5 years
Details	See <a href="http://www.moxa.com/tw/warranty">www.moxa.com/tw/warranty</a>

## Package Contents

Device	1 x NPort 5400 Series device server
Power Supply	1 x nonlocking barrel plug to bare wires: CBL-PJTB-10 1 x power adapter, suitable for your region (for standard temp. models only, 0 to 40°C, has not been tested for DNV compliance)
Installation Kit	1 x wall-mounting kit
Documentation	1 x quick installation guide 1 x warranty card

## 尺寸

單位：公釐（英吋）



## 訂購資訊

Model Name	Serial Interface	Serial Interface Connector	Serial Interface Isolation	Operating Temp.	Input Voltage
NPort 5410	RS-232	DB9 male	-	0 to 55°C	12 to 48 VDC
NPort 5430	RS-422/485	Terminal block	-	0 to 55°C	12 to 48 VDC
NPort 5430I	RS-422/485	Terminal block	2 kV	0 to 55°C	12 to 48 VDC
NPort 5450	RS-232/422/485	DB9 male	-	0 to 55°C	12 to 48 VDC
NPort 5450-T	RS-232/422/485	DB9 male	-	-40 to 75°C	12 to 48 VDC
NPort 5450I	RS-232/422/485	DB9 male	2 kV	0 to 55°C	12 to 48 VDC
NPort 5450I-T	RS-232/422/485	DB9 male	2 kV	-40 to 75°C	12 to 48 VDC

## 配件 (選購)

### Cables

CBL-RJ45SF9-150	8-pin RJ45 to DB9 female serial cable with shielding, 1.5m
CBL-F9M9-20	DB9 female to DB9 male serial cable, 20 cm
CBL-F9M9-150	DB9 female to DB9 male serial cable, 1.5 m
CBL-RJ458P-100	8-pin RJ45 CAT5 Ethernet cable, 1 m

### Connectors

ADP-RJ458P-DB9F	DB9 female to RJ45 connector
Mini DB9F-to-TB	DB9 female to terminal block connector

### DIN-Rail Mounting Kits

DK35A	DIN-rail mounting kit, 35 mm
-------	------------------------------

### Power Adapters

PWR-12125-WPAU-S1	Non-locking barrel plug, 12 VDC, 1.25 A, 100 to 240 VAC, Australia (AU) plug, 0 to 40°C operating temperature
PWR-12125-WPCN-S1	Non-locking barrel plug, 12 VDC, 1.25 A, 100 to 240 VAC, China (CN) plug, 0 to 40°C operating temperature
PWR-12125-WPEU-S1	Non-locking barrel plug, 12 VDC, 1.25 A, 100 to 240 VAC, Continental Europe (EU) plug, 0 to 40°C operating temperature
PWR-12125-WPUK-S1	Non-locking barrel plug, 12 VDC, 1.25 A, 100 to 240 VAC, United Kingdom (UK) plug, 0 to 40°C operating temperature
PWR-12125-USJP-S1	Non-locking barrel plug, 12 VDC, 1.25 A, 100 to 240 VAC, United States/Japan (US/JP) plug, 0 to 40°C operating temperature
PWR-12150-AU-SA-T	Locking barrel plug, 12 VDC, 1.5 A, 100 to 240 VAC, Australia (AU) plug, -40 to 75°C operating temperature  Applicable Models: NPort 5450-T NPort 5450I-T
PWR-12150-CN-SA-T	Locking barrel plug, 12 VDC, 1.5 A, 100 to 240 VAC, China (CN) plug, -40 to 75°C operating temperature  Applicable Models: NPort 5450-T NPort 5450I-T
PWR-12150-EU-SA-T	Locking barrel plug, 12 VDC, 1.5 A, 100 to 240 VAC, Continental Europe (EU) plug, -40 to 75°C operating temperature  Applicable Models: NPort 5450-T NPort 5450I-T
PWR-12150-UK-SA-T	Locking barrel plug, 12 VDC, 1.5 A, 100 to 240 VAC, United Kingdom (UK) plug, -40 to 75°C operating temperature  Applicable Models: NPort 5450-T NPort 5450I-T
PWR-12150-USJP-SA-T	Locking barrel plug, 12 VDC 1.5 A, 100 to 240 VAC, United States/Japan (US/JP) plug, -40 to 75°C operating temperature  Applicable Models: NPort 5450-T NPort 5450I-T

### Power Wiring

CBL-PJTB-10	Non-locking barrel plug to bare-wire cable
-------------	--

© Moxa Inc. 版權所有.2021 年 6 月 03 日更新。

未經 Moxa Inc. 明確書面許可，不得以任何方式複製或使用本文件及其任何部分。產品規格如有變更，恕不另行通知。請至本公司官網了解最新的產品資訊。