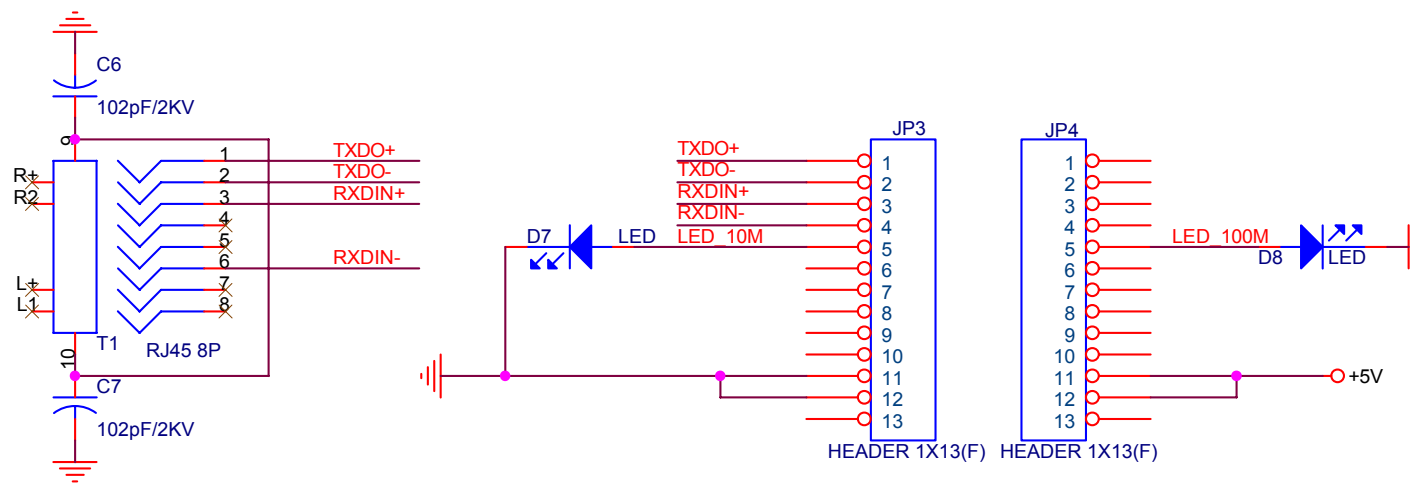
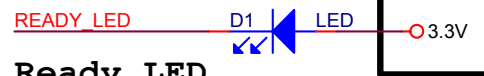
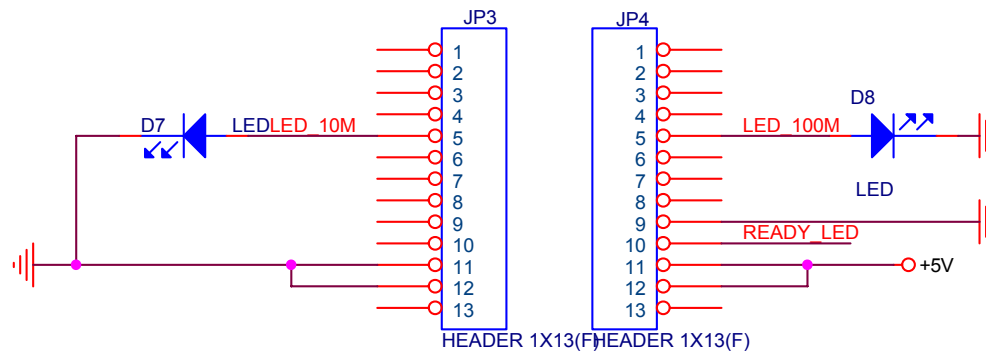


Absolute Max. Ratings		Min.	Max.	Unit
Vil	Input Low Voltage		1.08	V
Vih	Input High Voltage	2.1		V
Vol	Output Low Voltage		0.4	V
Voh	Output High Voltage	2.4		V

MOXA HWDC		
Title		
For NE-4100T		
Size	Document Number	Rev
A	DIO	1.0
Date:	Monday, May 17, 2004	Sheet 1 of 2



MOXA HWDC		
Title		
For NE-4100T		
Size	Document Number	Rev
A	EtherNet	1.0
Date:	Monday, May 17, 2004	Sheet 1 of 2



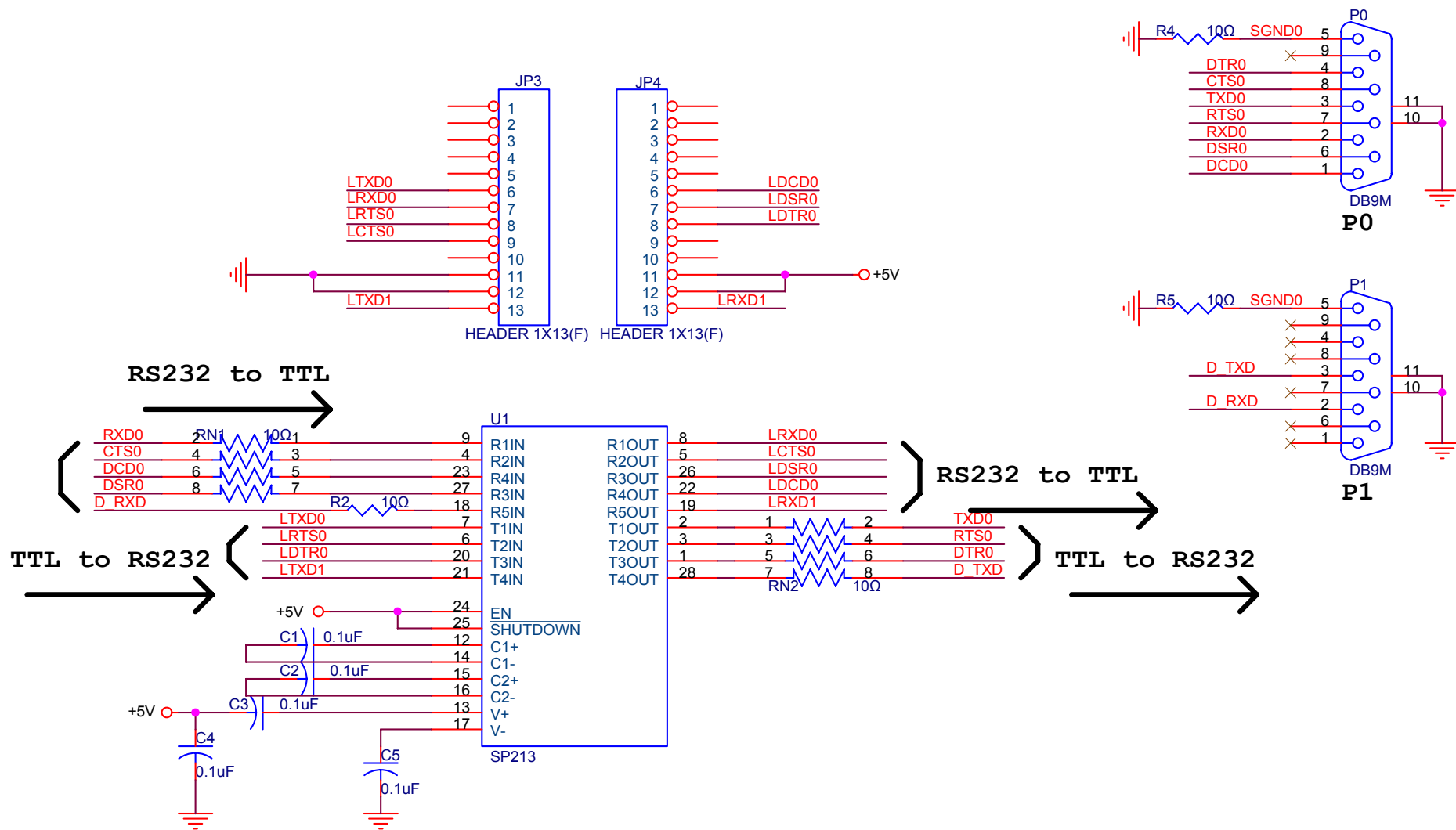
Ready LED

Note!! If the power is connected to 5V for Ready LED. The light-emitting diode will be a little luminous while it is turn off. We recomand connecting power to 3.3V to avoid this condition.



Power LED

MOXA HWDC		
Title		
For NE-4100T		
Size	Document Number	Rev
A	LED Display	1.2
Date:	Monday, May 17, 2004	Sheet 1 of 2



MOXA HWDC

Title

For NE-4100T

Size
A

Document Number

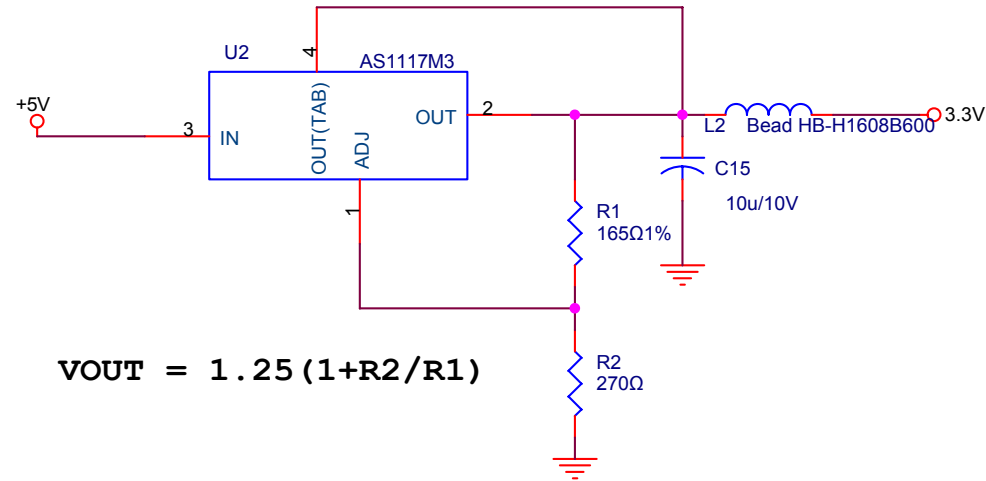
Line Driver & Connector

Rev
1.0

Date: Monday, May 17, 2004

Sheet 1 of 2

This linear regulator is only for Ready LED to avoid radiating little light while it should be turn off.



MOXA HWDC

Title

For NE-4100T

Size
A

Document Number

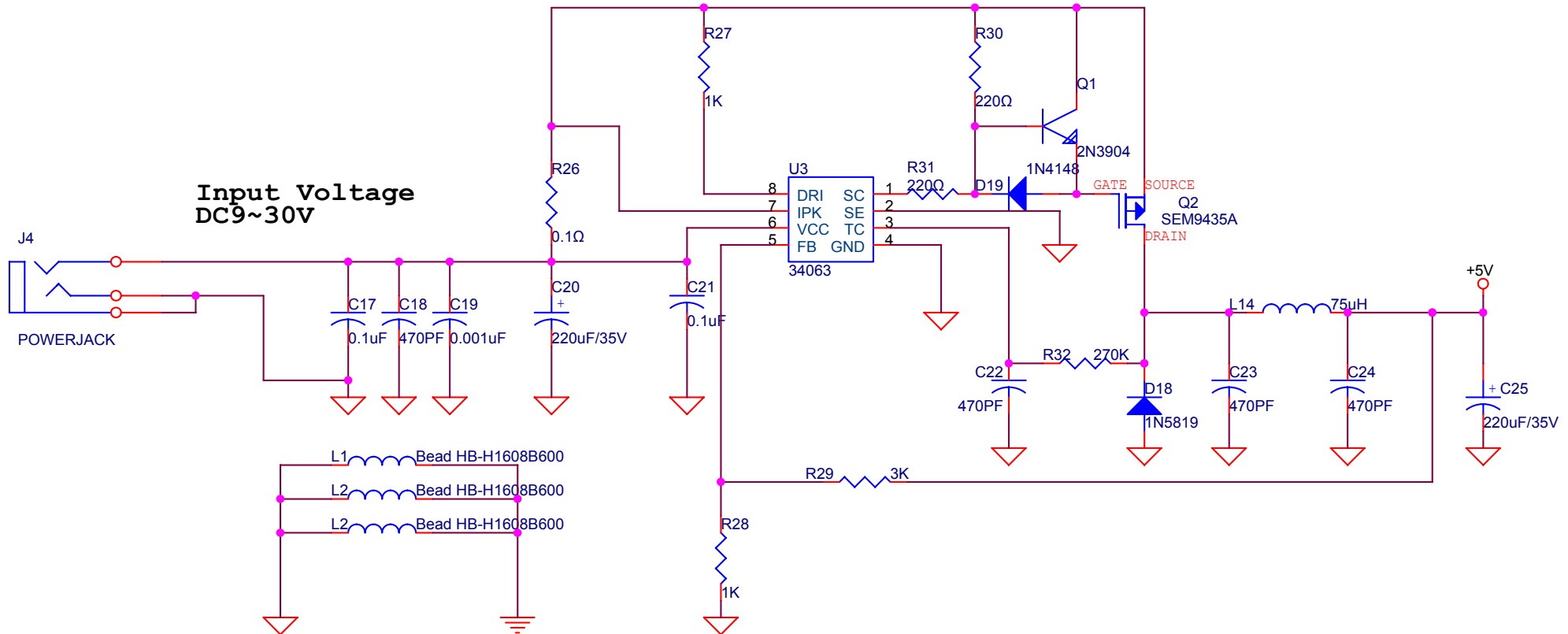
Linear Regulator

Rev
1.0

Date: Monday, May 17, 2004

Sheet 1 of 2

The switching regulator is for NE-4100T system power



MOXA HWDC

Title

For NE-4100T

Size
A

Document Number

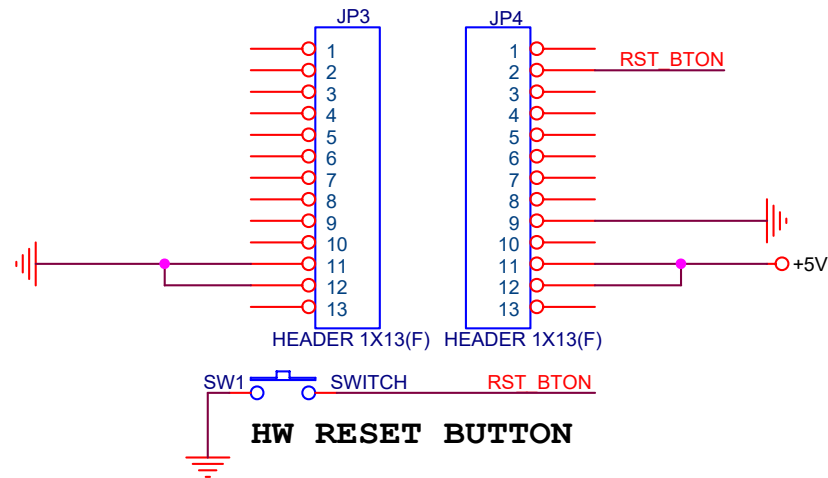
Switching Regulator

Rev
1.0

Date: Monday, May 17, 2004

Sheet 1 of 2

While push this button, the NE-4100T terminates all operations immediately and restarts the system.



MOXA HWDC

Title

For NE-4100T

Size
A

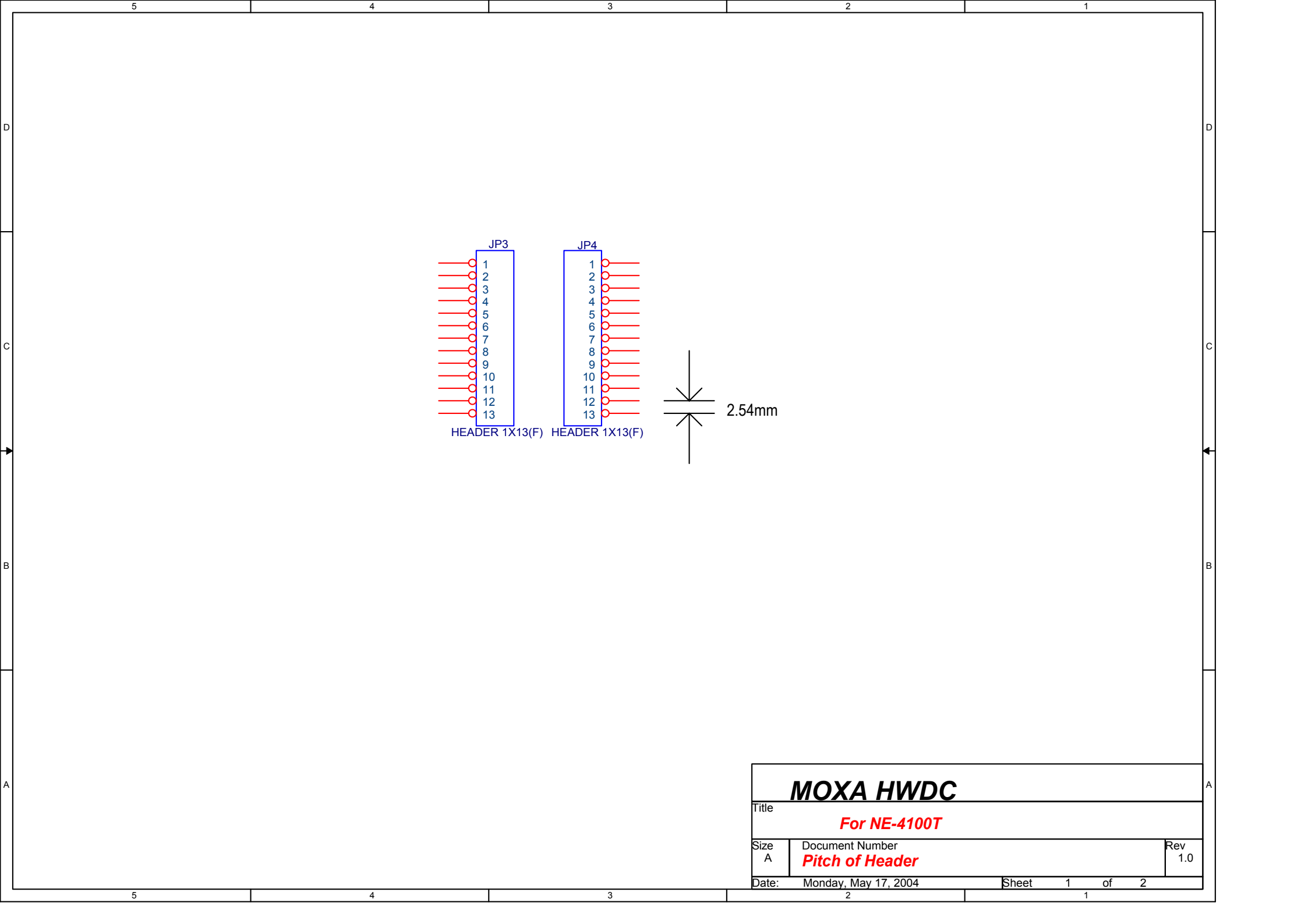
Document Number

Reset System

Rev
1.0

Date: Wednesday, July 20, 2022

Sheet 1 of 2



MOXA HWDC			
Title			
For NE-4100T			
Size	Document Number		Rev
A	Pitch of Header		1.0
Date:	Monday, May 17, 2004		Sheet 1 of 2