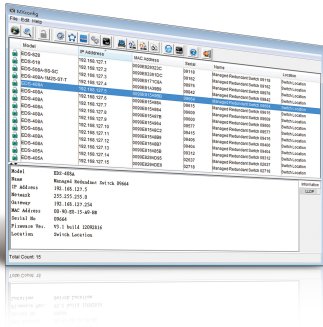


MXconfig 系列

工業網路配置工具



特色與優點

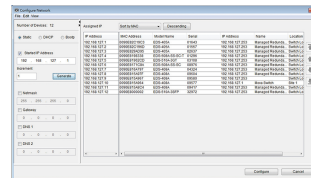
- 大量網管功能配置可提高部署效率並縮短設定時間
- 大量配置複製可降低安裝成本
- 連結順序檢測功能可消除手動設定錯誤
- 配置概覽和文件，可輕鬆進行狀態查看和管理
- 三個使用者權限層級，藉以增強管理彈性和安全性¹

簡介

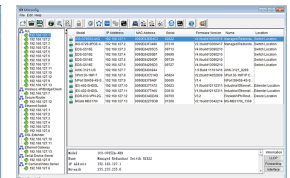
Moxa 的 MXconfig 是全面的 Windows 型公用程式，用於在工業網路上安裝、配置和維護多個 Moxa 裝置。這套實用工具將協助使用者一鍵設定多台裝置的 IP 位址、配置備援通訊協定和 VLAN 設定、修改多台 Moxa 裝置的多個網路配置、將韌體上傳到多台裝置、匯出或匯入設定檔、複製裝置的配置設定，輕鬆連結到 Web 和 Telnet 主控台，並測試裝置連線情況。MXconfig 可供裝置安裝人員和控制工程師以強大而簡單的方式大量配置裝置，並有效降低設定和維護成本。

裝置探索和快速群組配置

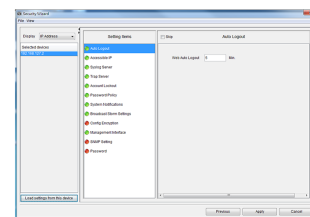
- 輕鬆廣播搜尋網路找出所有受支援的 Moxa 網管型乙太網路裝置
- 大量網路設定（例如 IP 位址、閘道器和 DNS）部署縮短設定時間
- 部署大量網管功能 可提高配置效率
- 方便設定安全相關 參數的安全精靈
- 方便分類的多重分組¹
- 方便使用的連接埠選擇面板提供實體連接埠描述¹
- VLAN 快速新增面板加快設定時間¹
- 使用 CLI 執行一鍵部署多台裝置



Network Setting



Multiple Grouping



Security Wizard

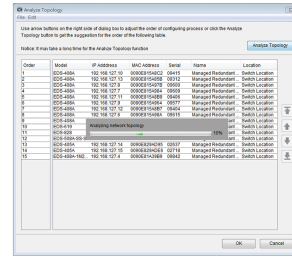
快速配置部署

- 快速配置：將特定設定複製到多個裝置並一鍵變更 IP 位址

1. 此功能僅在 Java 支持的版本中可用 MXconfig 的版本。

連結順序檢測

- 連結序列偵測可消除手動配置錯誤並避免中斷連線，尤其是在為菊鏈拓樸（線型拓樸）中的網路配置備援通訊協定、VLAN 設定或韌體升級時。
- 連結序列 IP 設定 (LSIP) 按連結序列對裝置排定優先順序並配置 IP 位址，藉以提高部署效率，尤其是在菊鏈拓樸（線型拓樸）中。



Analyze Topology

解鎖裝置和使用者權限

- 大量裝置解鎖和密碼檔案匯出，可快速解鎖。
- 三個使用者權限層級，藉以增強管理彈性和安全性：管理員、主管和操作人員。²

配置概覽和文件

- 每個網管功能的實用大量狀態概覽和配置檢查。
- 為網路中的多個裝置產生每個網管功能的報告。²
- 匯出具有彈性檔案名稱的多個設定檔，並且將多個設定檔匯入多個裝置。
- 匯出裝置清單方便備份，並匯入裝置清單方便快速搜尋。²

Status Overview

	A	B	C	D	E	F	G	H	I	J	K	L	M	
	IP	Activated Protocol	Ring 1 Enable	Ring 1 Master	Ring 1 Broken	Ring 2 Port	Ring 1 Broken	Ring 2 Enable	Ring 2 Master	Ring 2 Port	Ring 2 Broken	Coupling Enable	Coupling Mode	Coupling Port
1	192.168.127.1	Turbo Ring V2	Enable	no	1 forwarding 2 forwarding	normal	Disable	no	1 notRedundant 1 notRedundant	N/A	Disable	Dual Homing	1 notRedundant 1 notRedundant	
2	192.168.127.2	Turbo Ring V2	Enable	no	1 forwarding 2 forwarding	normal	Disable	no	1 notRedundant 1 notRedundant	N/A	Disable	Dual Homing	1 notRedundant 1 notRedundant	
3	192.168.127.3	Turbo Ring V2	Enable	no	1 forwarding 2 forwarding	normal	Disable	no	1 notRedundant 1 notRedundant	N/A	Disable	Dual Homing	1 notRedundant 1 notRedundant	
4	192.168.127.4	Turbo Ring V2	Enable	no	1 forwarding 2 forwarding	normal	Disable	no	1 notRedundant 1 notRedundant	N/A	Disable	Dual Homing	1 notRedundant 1 notRedundant	
5	192.168.127.5	Turbo Ring V2	Enable	no	1 forwarding 2 forwarding	normal	Disable	no	1 notRedundant 1 notRedundant	N/A	Disable	Dual Homing	1 notRedundant 1 notRedundant	
6	192.168.127.6	Turbo Ring V2	Enable	no	1 forwarding 2 forwarding	normal	Disable	no	1 notRedundant 1 notRedundant	N/A	Disable	Dual Homing	1 notRedundant 1 notRedundant	
7	192.168.127.7	Turbo Ring V2	Enable	no	1 forwarding 2 forwarding	normal	Disable	no	1 notRedundant 1 notRedundant	N/A	Disable	Dual Homing	1 notRedundant 1 notRedundant	
8	192.168.127.8	Turbo Ring V2	Enable	no	1 forwarding 2 forwarding	normal	Disable	no	1 notRedundant 1 notRedundant	N/A	Disable	Dual Homing	1 notRedundant 1 notRedundant	
9	192.168.127.9	Turbo Ring V2	Enable	no	1 forwarding 2 forwarding	normal	Disable	no	1 notRedundant 1 notRedundant	N/A	Disable	Dual Homing	1 notRedundant 1 notRedundant	
10	192.168.127.10	Turbo Ring V2	Enable	yes	1 forwarding 2 blocking	normal	Disable	no	1 notRedundant 1 notRedundant	N/A	Disable	Dual Homing	1 notRedundant 1 notRedundant	
11														
12														

File Export

規格

Hardware Requirements

RAM	2 GB
Hardware Disk Space	10 GB
OS	Windows 7 (32/64-bit), Windows 10 (32-64-bit), Windows Server 2012 (32/64-bit)
CPU	2 GHz or faster dual-core CPU

² 此功能僅在 Java 支持的版本中可用 MXconfig 的版本。

Supported Devices

AWK Products	MXconfig Java Version: AWK-1121 Series (v1.4 or higher) AWK-1127 Series (v1.4 or higher) AWK-1131A Series (v1.11 or higher) AWK-1137C Series (v1.3 or higher) AWK-3121 Series (v1.10 or higher) AWK-3121-SSC-RTG Series (v1.4 or higher) AWK-3121-M12-RTG Series (v1.4 or higher) AWK-3131 Series (v1.2 or higher) AWK-3131-M12-RCC Series (v1.0 or higher) AWK-3131A Series (v1.3 or higher) AWK-3131A-RTG Series (v1.8 or higher) AWK-4121 Series (v1.10 or higher) AWK-4131 Series (v1.2 or higher) AWK-4131A Series (v1.3 or higher) AWK-5222 Series (v1.7 or higher) AWK-5232 Series (v1.3 or higher) AWK-6222 Series (v1.7 or higher) AWK-6232 Series (v1.3 or higher)
EDR Products	MXconfig Java Version: EDR-810 Series (v3.2 or higher) EDR-G902 Series (v4.2 or higher) EDR-G903 Series (v4.2 or higher) MXconfig Non-Java Version: EDR-810 Series (v3.2 or higher) EDR-G902 Series (v4.2 or higher) EDR-G903 Series (v4.2 or higher) EDR-G9010 Series (v1.0 or higher)
EDS Products	MXconfig Java Version: EDS-405A/408A Series (v3.1 or higher) EDS-405A/408A-EIP Series (v3.1 or higher) EDS-405A/408A-PN Series (v3.1 or higher) EDS-405A-PTP Series (v3.3 or higher) EDS-505A/508A/516A Series (v3.1 or higher) EDS-510A Series (v3.1 or higher) EDS-518A Series (v3.1 or higher) EDS-510E/518E Series (v4.0 or higher) EDS-528E Series (v5.0 or higher) EDS-G508E/G512E/G516E Series (v4.0 or higher) EDS-G512E-8PoE Series (v4.0 or higher) EDS-608/611/616/619 Series (v3.1 or higher) EDS-728 Series (v3.1 or higher) EDS-828 Series (v3.1 or higher) EDS-G509 Series (v3.1 or higher) EDS-P510 Series (v3.1 or higher) EDS-P510A-8PoE Series (v3.1 or higher) EDS-P506A-4PoE Series (v3.1 or higher) EDS-P506E-4PoE Series (v5.5 or higher) MXconfig Non-Java Version: EDS-405A/408A Series (v3.1 or higher) EDS-405A/408A-EIP Series (v3.1 or higher) EDS-405A/408A-PN Series (v3.1 or higher) EDS-405A-PTP Series (v3.3 or higher) EDS-505A/508A/516A Series (v3.1 or higher) EDS-510A Series (v3.1 or higher) EDS-518A Series (v3.1 or higher) EDS-510E/518E Series (v4.0 or higher) EDS-528E Series (v5.0 or higher) EDS-G508E/G512E/G516E Series (v4.0 or higher) EDS-G512E-8PoE Series (v4.0 or higher) EDS-608/611/616/619 Series (v3.1 or higher) EDS-728 Series (v3.1 or higher) EDS-828 Series (v3.1 or higher) EDS-G509 Series (v3.1 or higher) EDS-P510 Series (v3.1 or higher) EDS-P510A-8PoE Series (v3.1 or higher) EDS-P506A-4PoE Series (v3.1 or higher) EDS-P506E-4PoE Series (v5.5 or higher)

ICS Products	<p>MXconfig Java Version: ICS-G7526/G7528 Series (v3.1 or higher) ICS-G7826/G7828 Series (v3.1 or higher) ICS-G7748/G7750/G7752 Series (v3.1 or higher) ICS-G7848/G7850/G7852 Series (v3.1 or higher) ICS-G7526A/G7528A Series (v4.0 or higher) ICS-G7826A/G7828A Series (v4.0 or higher) ICS-G7748A/G7750A/G7752A Series (v4.0 or higher) ICS-G7848A/G7850A/G7852A Series (v4.0 or higher)</p> <p>MXconfig Non-Java Version: ICS-G7826/G7828 Series (v3.1 or higher) ICS-G7748/G7750/G7752 Series (v3.1 or higher) ICS-G7848/G7850/G7852 Series (v3.1 or higher) ICS-G7526A/G7528A Series (v4.0 or higher) ICS-G7826A/G7828A Series (v4.0 or higher) ICS-G7748A/G7750A/G7752A Series (v4.0 or higher) ICS-G7848A/G7850A/G7852A Series (v4.0 or higher)</p>
IEX Products	<p>MXconfig Java Version: IEX-402 Series (v1.0 or higher) IEX-408E Series (v4.0 or higher)</p> <p>MXconfig Non-Java Version: IEX-402 Series (v1.0 or higher) IEX-408E Series (v4.0 or higher)</p>
IKS Products	<p>MXconfig Java Version: IKS-6726/6728 Series (v3.1 or higher) IKS-G6524 Series (v3.1 or higher) IKS-G6824 Series (v3.1 or higher) IKS-6728-8PoE Series (v3.1 or higher) IKS-6726A/6728A Series (v4.0 or higher) IKS-G6524A Series (v4.0 or higher) IKS-G6824A Series (v4.0 or higher) IKS-6728A-8PoE Series (v4.0 or higher)</p> <p>MXconfig Non-Java Version: IKS-6726/6728 Series (v3.1 or higher) IKS-G6524 Series (v3.1 or higher) IKS-G6824 Series (v3.1 or higher) IKS-6728-8PoE Series (v3.1 or higher) IKS-6726A/6728A Series (v4.0 or higher) IKS-G6524A Series (v4.0 or higher) IKS-G6824A Series (v4.0 or higher) IKS-6728A-8PoE Series (v4.0 or higher)</p>
ioLogik Products	<p>MXconfig Java Version: ioLogik E1200 Series (v3.2 or higher)</p>
ioThinX Products	<p>MXconfig Java Version: ioThinX 4510 Series (v1.3 or higher)</p>
MDS Products	<p>MXconfig Java Version: MDS-G4012 Series (v1.1 or higher) MDS-G4020 Series (v1.1 or higher) MDS-G4028 Series (v1.1 or higher)</p> <p>MXconfig Non-Java Version: MDS-G4012 Series (v1.1 or higher) MDS-G4020 Series (v1.1 or higher) MDS-G4028 Series (v1.1 or higher) MDS-G4012-L3 Series (v2.0 or higher) MDS-G4020-L3 Series (v2.0 or higher) MDS-G4028-L3 Series (v2.0 or higher)</p>
MGate Products	<p>MXconfig Java Version: MGate MB3170/MB3270 Series (v4.2 or higher) MGate MB3180 Series (v2.2 or higher) MGate MB3280 Series (v4.1 or higher) MGate MB3480 Series (v3.2 or higher) MGate MB3660 Series (v2.5 or higher) MGate EIP3170 Series (v2.0 or higher)</p>

	<p>MGate EIP3270 Series (v2.0 or higher) MGate 5101-PBM-MN Series (v2.2 or higher) MGate 5102-PBM-PN Series (v2.3 or higher) MGate 5103 Series (v2.2 or higher) MGate 5105-MB-EIP Series (v4.3 or higher) MGate 5108 Series (v2.4 or higher) MGate 5208 Series (v2.4 or higher) MGate 5109 Series (v2.3 or higher) MGate 5111 Series (v1.3 or higher) MGate 5114 Series (v1.3 or higher) MGate 5118 Series (v2.2 or higher) MGate 5217 Series (v1.0 or higher)</p>
NPort Products	<p>MXconfig Java Version: NPort S8000 Series (v1.3 or higher) NPort S9000 Series (v1.0 or higher) NPort 5110 Series (v3.8 or higher) NPort 5130/5150 Series (v3.8 or higher) NPort 5000AI-M12 Series (v1.4 or higher) NPort 5200 Series (v2.10 or higher) NPort 5400 Series (v3.13 or higher) NPort 5600 Series (v3.9 or higher) NPort 5100A Series (v1.5 or higher) NPort 5200A Series (v1.5 or higher) NPort 5610-8-DT/5610-8-DT-J/5650-8-DT/5650I-8-DT/5650-8-DT-J Series (v2.6 or higher) NPort 5610-8-DTL/5650-8-DTL/5650I-8-DTL Series (v1.5 or higher) NPort IA5000 Series (v1.6 or higher) NPort IA5150A/IA5150AI/IA5250A/IA5250AI Series (v1.4 or higher) NPort IA5450A/IA5450AI Series (v1.6 or higher) NPort 6000 Series (v1.21 or higher)</p>
PT Products	<p>MXconfig Java Version: PT-7528 Series (v3.1 or higher) PT-7710 Series (v3.1 or higher) PT-7728 Series (v3.1 or higher) PT-7828/7828-PTP Series (v3.1 or higher) PT-G7509 Series (v3.1 or higher) PT-508/510 Series (v3.1 or higher) PT-G7728 Series (v5.4 or higher) PT-G7828 Series (v5.4 or higher)</p> <p>MXconfig Non-Java Version: PT-7528 Series (v3.1 or higher) PT-7710 Series (v3.1 or higher) PT-7728 Series (v3.1 or higher) PT-7828/7828-PTP Series (v3.1 or higher) PT-G7509 Series (v3.1 or higher) PT-508/510 Series (v3.1 or higher) PT-G7728 Series (v5.4 or higher) PT-G7828 Series (v5.4 or higher)</p>
SDS Products	<p>MXconfig Non-Java Version: SDS-3008 Series (v2.1 or higher) SDS-3016 Series (v2.1 or higher)</p>
TAP Products	<p>MXconfig Java Version: TAP-213 Series (v1.2 or higher) TAP-323 Series (v1.8 or higher)</p>
TN Products	<p>MXconfig Java Version: TN-4500A Series (v3.5 or higher) TN-5508/5510 Series (v3.1 or higher) TN-5516/5518 Series (v3.1 or higher) TN-5916 Series (v1.2 or higher)</p> <p>MXconfig Non-Java Version: TN-4500A Series (v3.5 or higher) TN-4908 Series (v1.0 or higher) TN-5508/5510 Series (v3.1 or higher) TN-5516/5518 Series (v3.1 or higher) TN-5916 Series (v1.2 or higher) TN-G6500 Series (v5.0 or higher)</p>

VPort Products	MXconfig Java Version: VPort 26A-1MP Series (v1.2 or higher) VPort 36-1MP Series (v1.1 or higher) VPort P06-1MP-M12 Series (v2.2 or higher)
WAC Products	MXconfig Java Version: WAC-1001 Series (v2.1 or higher) WAC-2004 Series (v1.6 or higher)

© Moxa Inc. 版權所有.2022 年 1 月 04 日更新。

未經 Moxa Inc. 明確書面許可，不得以任何方式複製或使用本文件及其任何部分。產品規格如有變更，恕不另行通知。請至本公司官網了解最新的產品資訊。